

# SLAPP TWO DEPARTURE (RNAV)

AL-67 (FAA)

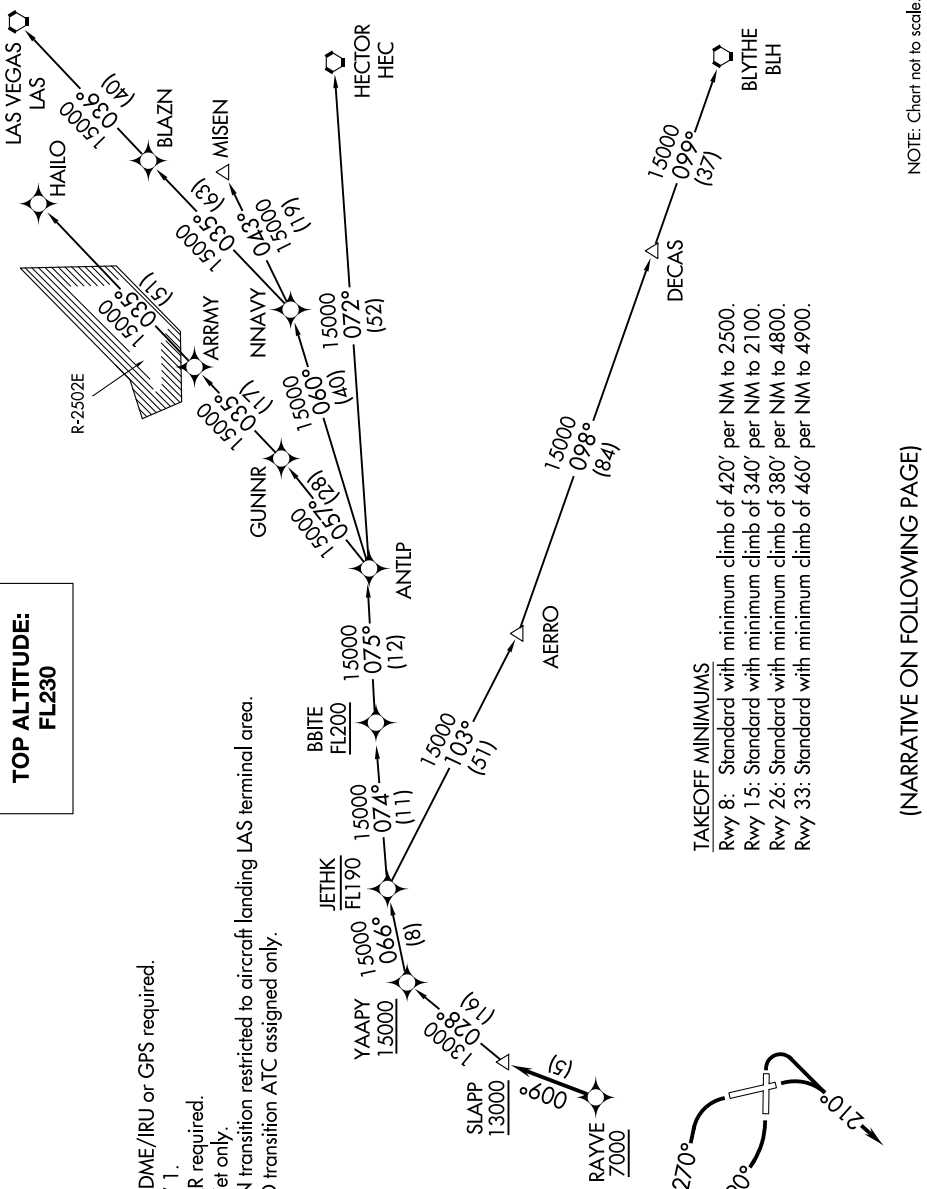
BOB HOPE (BUR)  
BURBANK, CALIFORNIA

SW-3, 16 APR 2026 to 14 MAY 2026

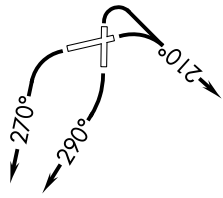
**TOP ALTITUDE:  
FL230**

CINCDEL  
118.0 348.6  
CPDLC  
SOCAL DEP CON  
124.6 298.85

- NOTE: DME/DME/IRU or GPS required.
- NOTE: RNAV 1.
- NOTE: RADAR required.
- NOTE: Turbojet only.
- NOTE: MISEN transition restricted to aircraft landing LAS terminal area.
- NOTE: HAILO transition ATC assigned only.



**TAKEOFF MINIMUMS**  
 Rwy 8: Standard with minimum climb of 420' per NM to 2500.  
 Rwy 15: Standard with minimum climb of 340' per NM to 2100.  
 Rwy 26: Standard with minimum climb of 380' per NM to 4800.  
 Rwy 33: Standard with minimum climb of 460' per NM to 4900.



(NARRATIVE ON FOLLOWING PAGE)

NOTE: Chart not to scale.

# SLAPP TWO DEPARTURE (RNAV)

(SLAPP2.SLAPP) 10SEP20

BURBANK, CALIFORNIA  
BOB HOPE (BUR)