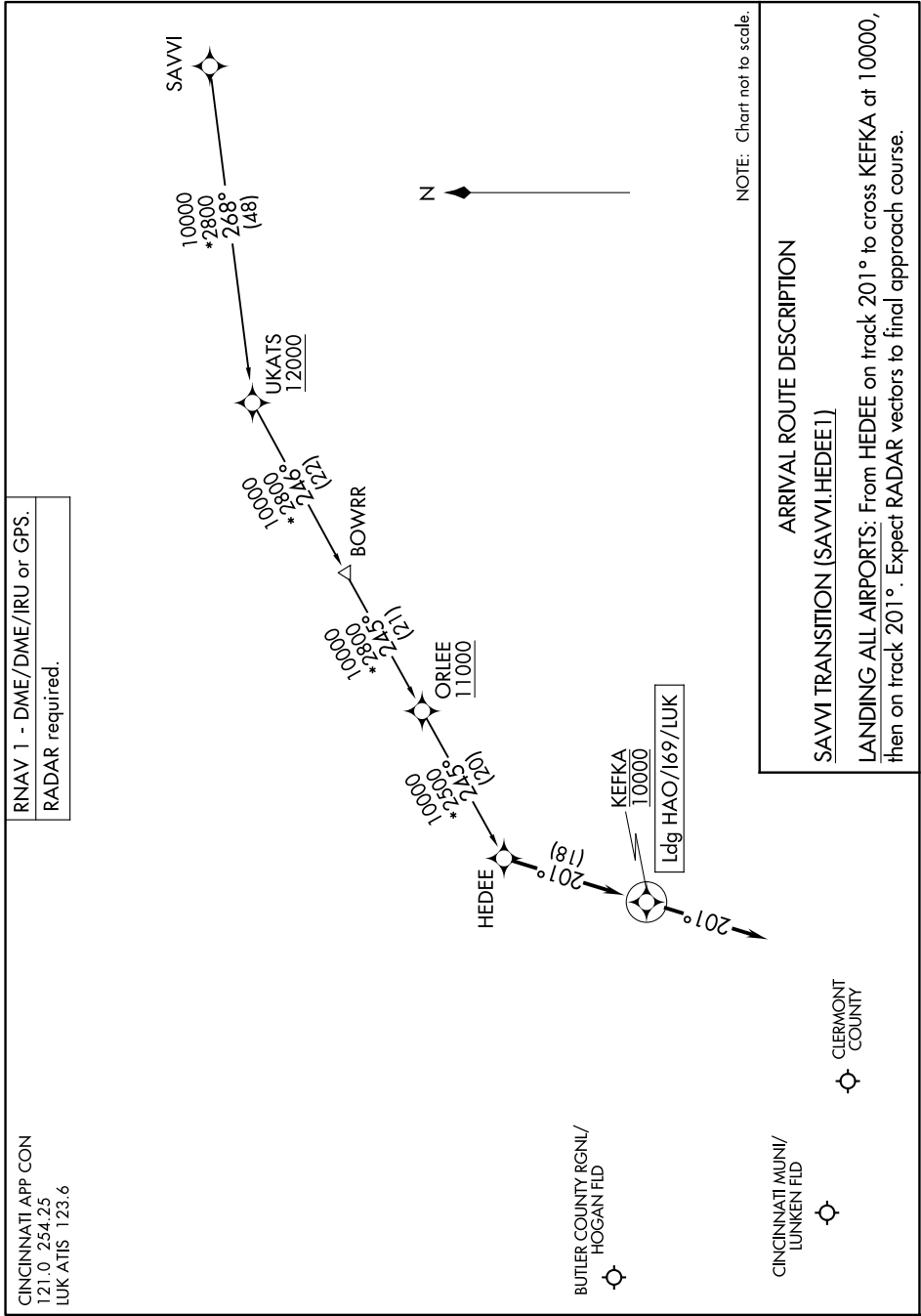


EC-2, 16 APR 2026 to 14 MAY 2026



NOTE: Chart not to scale.

ARRIVAL ROUTE DESCRIPTION

SAWVI TRANSITION (SAWVI,HEDEE1)

LANDING AIRPORTS: From HEDEE on track 201° to cross KEFKA at 10000, then on track 201°. Expect RADAR vectors to final approach course.

CINCINNATI APP CON  
121.0 254.25  
LUK ATIS 123.6

EC-2, 16 APR 2026 to 14 MAY 2026