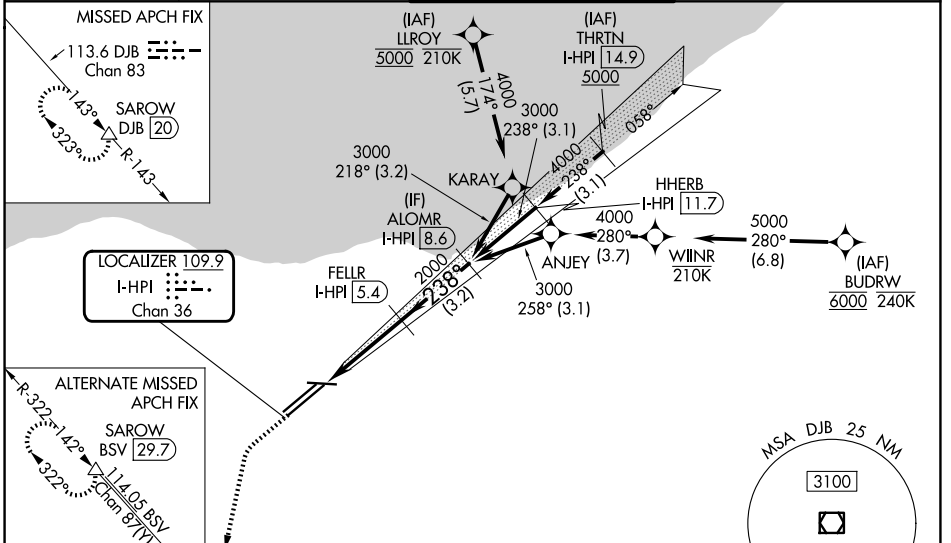


LOC/DME I-HPI 109.9 Chan 36	APP CRS 238°	Rwy Ldg TDZE Apt Elev	9953 786 799
---	------------------------	-----------------------------	---

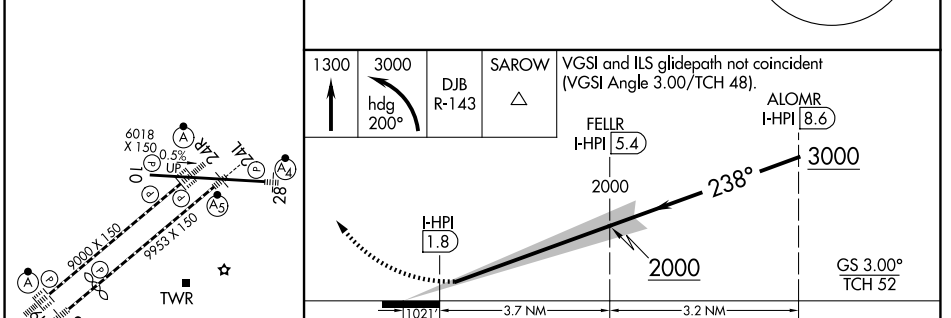
ILS RWY 24L (SA CAT II)
CLEVELAND-HOPKINS INTL (CLE)

DME required. Aircraft not DME/DME/IRU or GPS equipped - RADAR required for procedure entry. RNAV 1. From LLROY and BU DRW: RNAV 1-DME/DME/IRU or GPS required for procedure entry.	MALS R 	MISSED APPROACH: Climb to 1300 then climbing left turn to 3000 on heading 200° and DJB VOR/DME R-143 to SAROW/DJB 20 DME and hold.
Simultaneous approach authorized. Simultaneous operations require use of vertical guidance; maintain last assigned altitude until established on glideslope. Reduced lighting: requires specific OPSPEC, MSPEC, or LOA approval and use of autoland or HUD to touchdown.		

D-ATIS 127.85	CLEVELAND APP CON 126.55 364.325	CLEVELAND TOWER 124.5 273.45	GND CON 121.7 273.45
-------------------------	--	--	--------------------------------



ELEV 799	D	TDZE 24L 786
----------	----------	--------------



CATEGORY	A	B	C	D
S-ILS 24L	RA 100/12 100 DA 886			

SA CATEGORY II ILS - SPECIAL AIRCREW & AIRCRAFT CERTIFICATION REQUIRED

REIL Rwy 10
TDZ/CL Rwsy 6L, 6R, 24L, and 24R
HIRL Rwsy 6L-24R, 6R-24L, and 10-28

EC-2, 16 APR 2026 to 14 MAY 2026

EC-2, 16 APR 2026 to 14 MAY 2026