


LOC/DME I-PVY 111.55	APP CRS 238°	Rwy Ldg TDZE 780 Apt Elev 799
Chan 52(Y)		

ILS RWY 24R (CAT II & III)

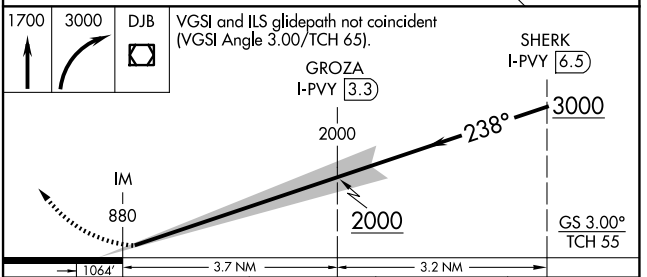
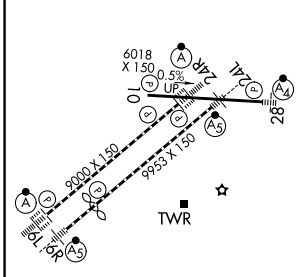
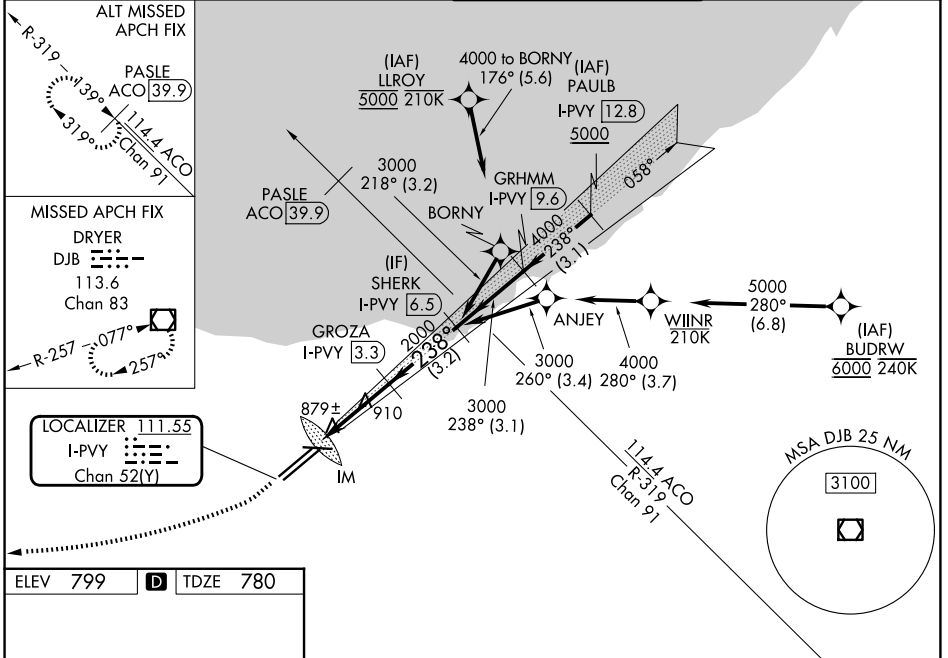
CLEVELAND-HOPKINS INTL (CLE)

DME required. Aircraft not DME/DME/IRU or GPS equipped - RADAR required for procedure entry. RNAV 1. From LLROY and BUDRW: RNAV 1-DME/DME/IRU or GPS required for procedure entry.

▲ CAT II: RVR 1000 authorized with specific OPSPEC, MSPEC, or LOA approval and use of autoland or HUD to touchdown. Simultaneous approach authorized. Simultaneous operations require use of vertical guidance; maintain last assigned altitude until established on glideslope.

ALSF-2

 MISSED APPROACH: Climb to 1700 then climbing right turn to 3000 direct DJB VOR/DME and hold.

D-ATIS 127.85	CLEVELAND APP CON 126.55 346.325	CLEVELAND TOWER 124.5 273.45	GND CON 121.7 273.45
-------------------------	--	--	--------------------------------



ELEV 799	D	TDZE 780
----------	----------	----------

REIL Rwy 10
 TDZ/CL Rwy 6L, 6R, 24L and 24R
 HIRL Rwy 6L-24R, 6R-24L and 10-28

CATEGORY II & III ILS - SPECIAL AIRCREW & AIRCRAFT CERTIFICATION REQUIRED

EC-2, 16 APR 2026 to 14 MAY 2026

EC-2, 16 APR 2026 to 14 MAY 2026