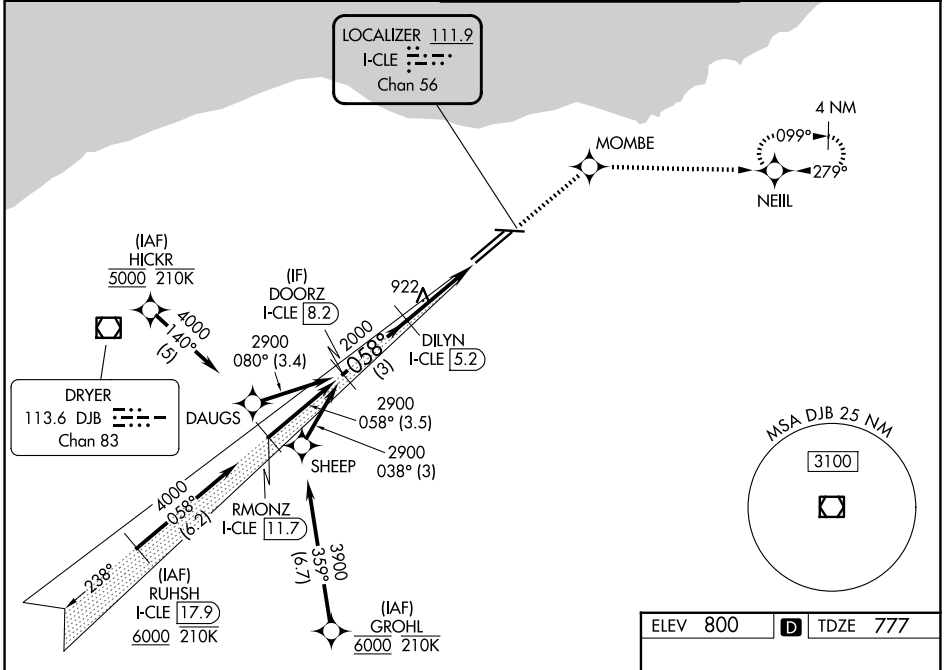


LOC/DME I-CLE <b>111.9</b> Chan <b>56</b>	APP CRS <b>058°</b>	Rwy Ldg <b>8029</b> TDZE <b>777</b> Apt Elev <b>800</b>
---	------------------------	---

# ILS RWY 6R (SA CAT II)

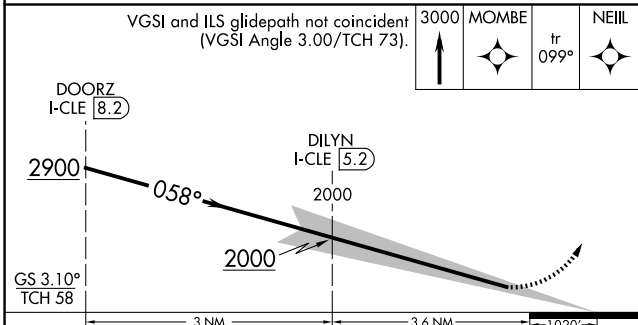
CLEVELAND-HOPKINS INTL (CLE)

RNP APCH - GPS.		MALSR MOMBE NEIL	MISSED APPROACH: Climb to 3000 direct MOMBE and on track 099° to NEIL and hold.		
Simultaneous approach authorized. Simultaneous operations require use of vertical guidance; maintain last assigned altitude until established on glideslope. Requires specific OPSPEC, MSPEC, or LOA approval.			D-ATIS <b>127.85</b>	CLEVELAND APP CON <b>126.55 346.325</b>	CLEVELAND TOWER <b>124.5 273.45</b>



EC-2, 16 APR 2026 to 14 MAY 2026

EC-2, 16 APR 2026 to 14 MAY 2026



ELEV 800	<b>D</b> TDZE 777
----------	-------------------

REIL Rwy 10  
TDZ/CL Rwy 6L, 6R, 24L and 24R  
HIRL Rwy 6L-24R, 6R-24L and 10-28

CATEGORY	A	B	C	D
S-ILS 6R	RA 100/12 100 DA 877			
<b>SA CATEGORY II ILS - SPECIAL AIRCREW &amp; AIRCRAFT CERTIFICATION REQUIRED</b>				