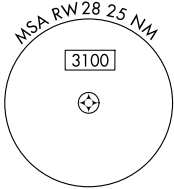
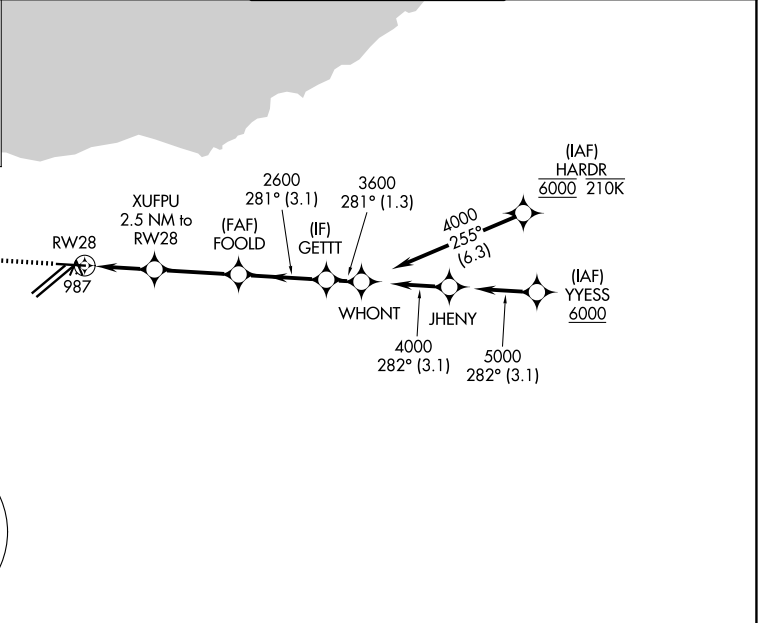
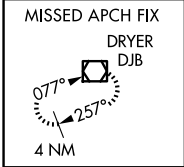


WAAS CH 40109 W28A	APP CRS 281°	Rwy Ldg 6018 TDZE 799 Apt Elev 799
--	------------------------	---

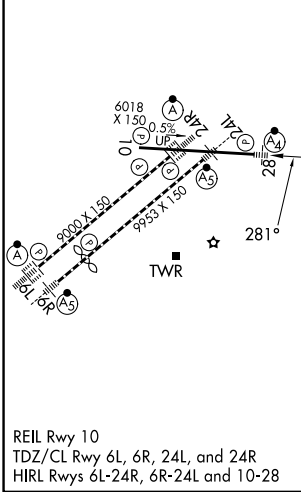
RNAV (GPS) RWY 28

CLEVELAND-HOPKINS INTL (CLE)

RNP APCH. ▼ For uncompensated Baro-VNAV systems, LNAV/VNAV NA below -18°C (0°F) or above 54°C (130°F). Circling Rwy 10 NA at night. Inop table does not apply to LPV.		MALSF 	MISSED APPROACH: Climb to 1400 then climbing left turn to 3000 direct DJB VOR/DME and hold.
D-ATIS 127.85	CLEVELAND APP CON 126.55 346.325	CLEVELAND TOWER 124.5 273.45	GND CON 121.7 273.45



ELEV 799	D	TDZE 799
----------	----------	----------



1400	3000	DJB																										
*LNAV only.																												
RWY28	XUFPU 2.5 NM to RWY28	FOOLD 2600	GETT 3600																									
1.3 NM	1.2 NM	3 NM	3.1 NM																									
GP 3.00°	TCH 46																											
REIL Rwy 10	TDZ/CL Rwy 6L, 6R, 24L, and 24R	HIRL Rwy 6L-24R, 6R-24L and 10-28																										
<table border="1"> <tr> <th>CATEGORY</th> <th>A</th> <th>B</th> <th>C</th> <th>D</th> </tr> <tr> <td>LPV DA</td> <td></td> <td>999/40</td> <td>200 (200-¾)</td> <td></td> </tr> <tr> <td>LNAV/VNAV DA</td> <td></td> <td>1168/40</td> <td>369 (400-¾)</td> <td></td> </tr> <tr> <td>LNAV MDA</td> <td>1260/40</td> <td>461 (500-¾)</td> <td>1260/60</td> <td>461 (500-1¼)</td> </tr> <tr> <td>CIRCLING</td> <td>1420-1</td> <td>621 (700-1)</td> <td>1420-1¾ 621 (700-1¾)</td> <td>1420-2 621 (700-2)</td> </tr> </table>	CATEGORY	A	B	C	D	LPV DA		999/40	200 (200-¾)		LNAV/VNAV DA		1168/40	369 (400-¾)		LNAV MDA	1260/40	461 (500-¾)	1260/60	461 (500-1¼)	CIRCLING	1420-1	621 (700-1)	1420-1¾ 621 (700-1¾)	1420-2 621 (700-2)			
CATEGORY	A	B	C	D																								
LPV DA		999/40	200 (200-¾)																									
LNAV/VNAV DA		1168/40	369 (400-¾)																									
LNAV MDA	1260/40	461 (500-¾)	1260/60	461 (500-1¼)																								
CIRCLING	1420-1	621 (700-1)	1420-1¾ 621 (700-1¾)	1420-2 621 (700-2)																								

EC-2, 16 APR 2026 to 14 MAY 2026

EC-2, 16 APR 2026 to 14 MAY 2026