

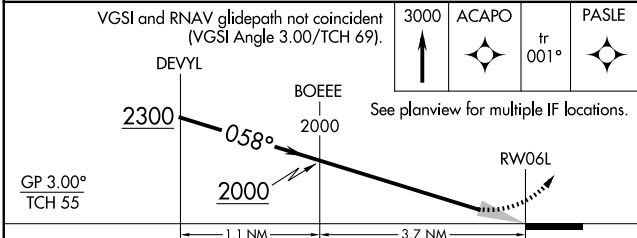
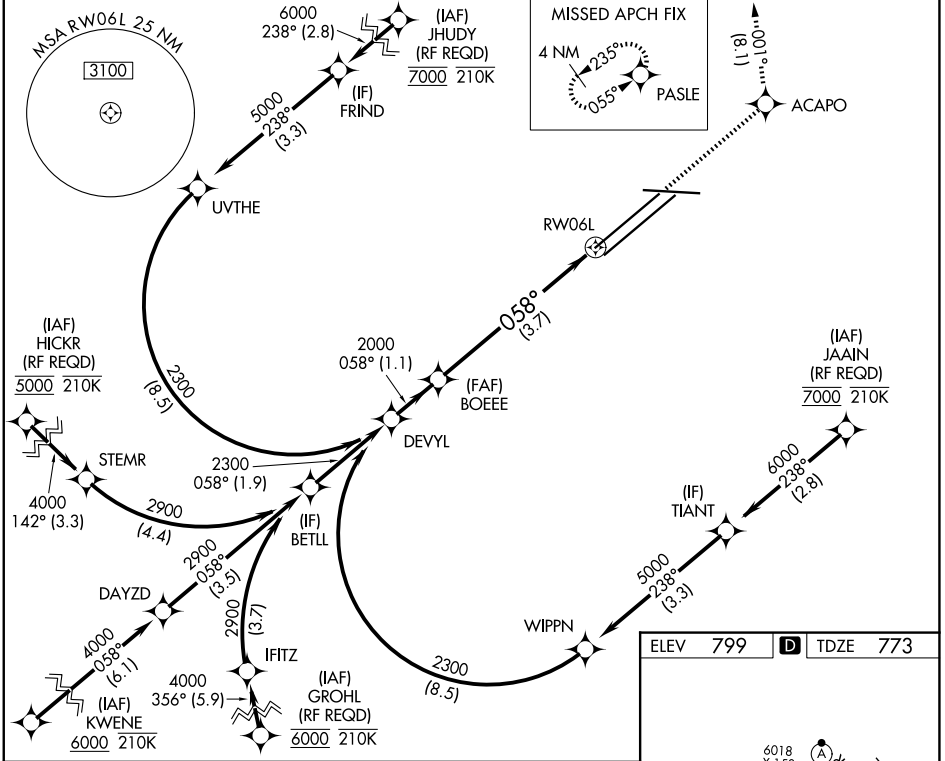
APP CRS 058°	Rwy Ldg 9000
	TDZE 773
	Apt Elev 799

RNAV (RNP) Z RWY 6L

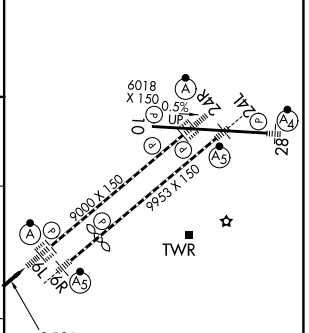
CLEVELAND-HOPKINS INTL (CLE)

RNP AR APCH.	<p>For uncompensated Baro-VNAV systems, procedure NA below -18°C (0°F) or above 54°C (130°F). For inop ALS, increase RNP 0.17 all Cats visibility to RVR 5500 and RNP 0.30 all Cats visibility to RVR 6000.</p>	<p>ALSF-2</p>	<p>MISSED APPROACH: Climb to 3000 direct ACAPO and on track 001° to PASLE and hold.</p>
--------------	---	---------------	---

D-ATIS 127.85	CLEVELAND APP CON 126.55 346.325	CLEVELAND TOWER 124.5 273.45	GND CON 121.7 273.45
-------------------------	--	--	--------------------------------



ELEV 799	D	TDZE 773
----------	----------	----------



CATEGORY	A	B	C	D
RNP 0.17 DA		1123/30	350 (400-5%)	
RNP 0.30 DA		1176/40	403 (400-5%)	

AUTHORIZATION REQUIRED

REIL Rwy 10
TDZ/CL Rwy 6L, 6R, 24L, and 24R
HIRL Rwy 6L-24R, 6R-24L and 10-28

EC-2, 16 APR 2026 to 14 MAY 2026

EC-2, 16 APR 2026 to 14 MAY 2026