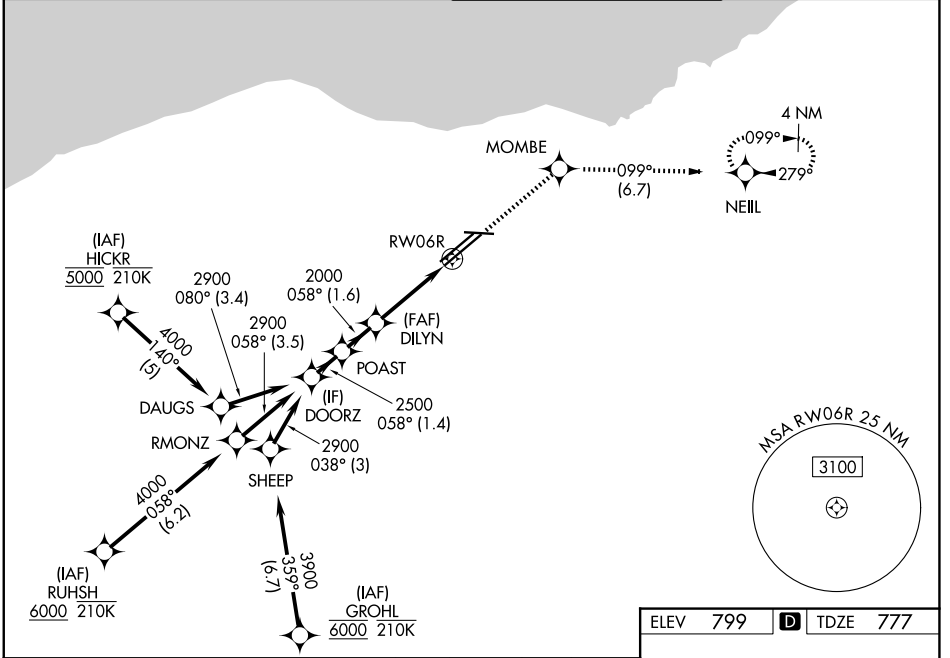


WAAS CH 81806 W06B	APP CRS 058°	Rwy Ldg 8029 TDZE 777 Apt Elev 799
--	------------------------	---

RNAV (GPS) Y RWY 6R

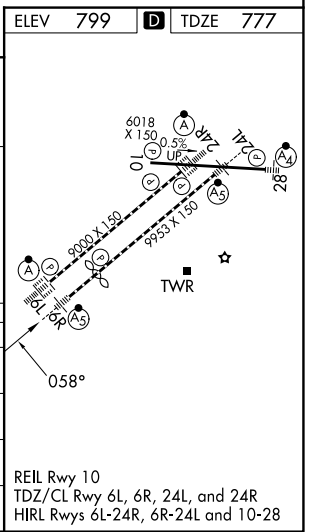
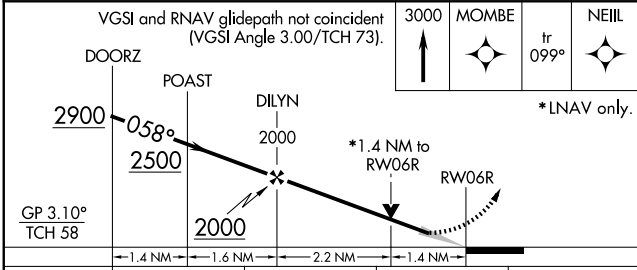
CLEVELAND-HOPKINS INTL (CLE)

RNP APCH.		MALSR	MISSED APPROACH: Climb to 3000 direct MOMBE and on track 099° to NEILL and hold.
<p>▼ For uncompensated Baro-VNAV systems, LNAV/VNAV NA below -18°C (0°F) or above 46°C (114°F). Circling Rwy 10 NA at night. For inop ALS, increase LNAV Cats C/D visibility to 1½ SM.</p>			
D-ATIS 127.85	CLEVELAND APP CON 126.55 346.325	CLEVELAND TOWER 124.5 273.45	GND CON 121.7 273.45



EC-2, 16 APR 2026 to 14 MAY 2026

EC-2, 16 APR 2026 to 14 MAY 2026



ELEV 799	D	TDZE 777		
<p>VGSi and RNAV glidepath not coincident (VGSi Angle 3.00/TCH 73).</p> <p>3000 ↑ MOMBE tr 099° NEILL</p> <p>*LNAV only.</p>				
CATEGORY	A	B	C	D
LPV DA	977/18		200 (200-½)	
LNAV/VNAV DA	1227/45		450 (500-¾)	
LNAV MDA	1260/24	483 (500-½)	1260/50	483 (500-1)
CIRCLING	1420-1	621 (700-1)	1420-1¾ 621 (700-1¾)	1420-2 621 (700-2)