

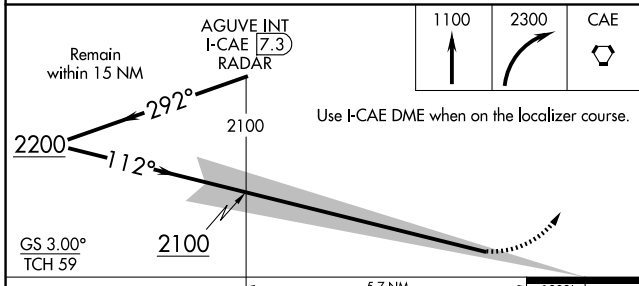
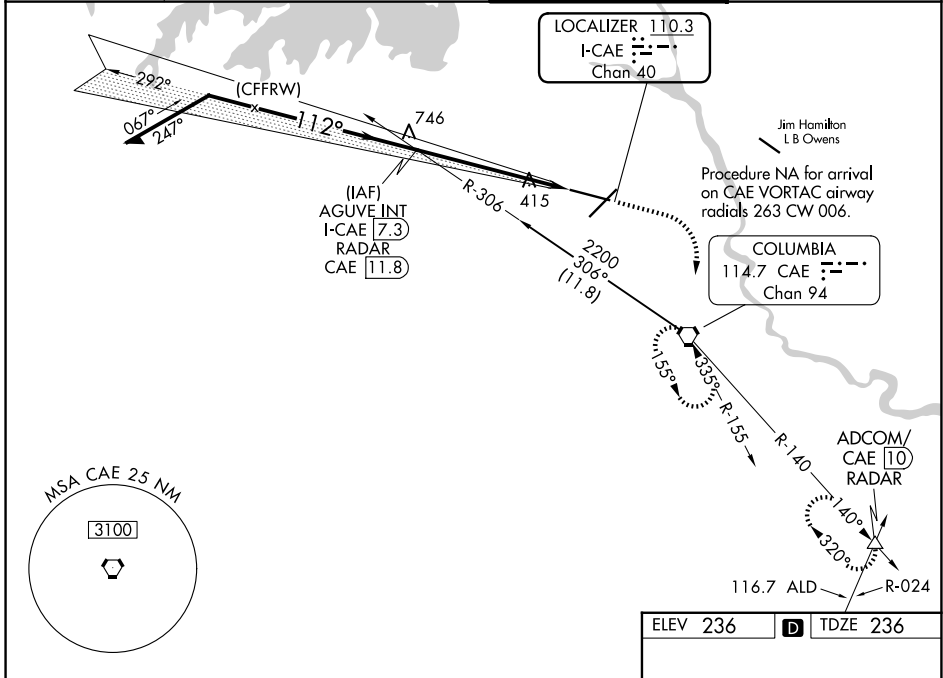
LOC/DME I-CAE 110.3 Chan 40	APP CRS 112°	Rwy Ldg TDZE 236 Apt Elev 236
--	------------------------	---

ILS RWY 11 (CAT II & III)

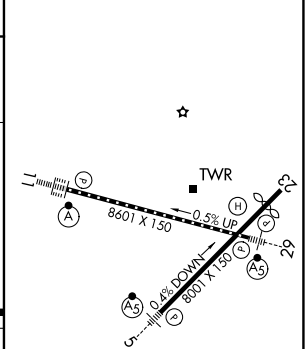
COLUMBIA METRO (CAE)

	MISSED APPROACH: Climb to 1100 then climbing right turn to 2300 direct CAE VORTAC and hold, continue climb-in-hold to 2300. (TACAN aircraft continue on CAE VORTAC R-140 to ADCOM INT/CAE VORTAC 10 DME and hold NW, right turn, 140° inbound)	
	ALSF-2 	ALSF-2

ATIS 120.15	COLUMBIA APP CON 124.15 338.2 (110°-289°) 133.4 285.6 (290°-109°)	COLUMBIA TOWER 119.5 257.8	GND CON 121.9 348.6
-----------------------	---	--------------------------------------	-------------------------------



ELEV 236		TDZE 236
----------	--	----------



CATEGORY	A	B	C	D
S-ILS 11	CAT II RA 128/12 100 DA 336			
S-ILS 11	CAT III RVR 06			

CATEGORY II & III ILS-SPECIAL AIRCREW & AIRCRAFT CERTIFICATION REQUIRED

REIL Rwy 23
 TDZ/CL Rwy 11
 HIRL Rwy 5-23 and 11-29

SE-2, 16 APR 2026 to 14 MAY 2026

SE-2, 16 APR 2026 to 14 MAY 2026