

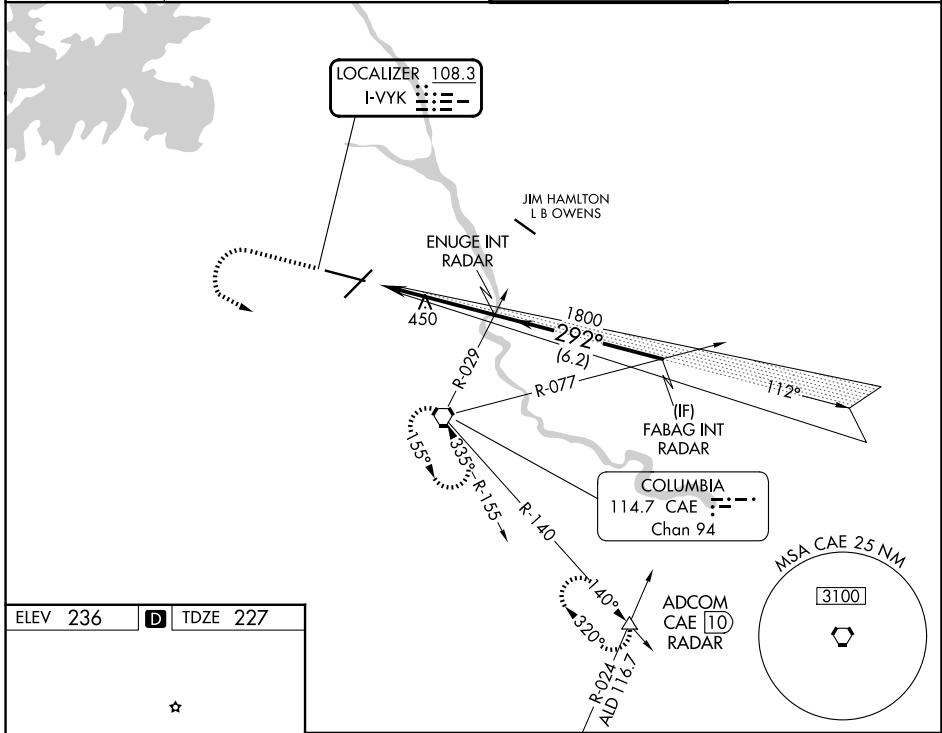
LOC I-VYK <b>108.3</b>	APP CRS <b>292°</b>	Rwy Ldg TDZE Apt Elev	<b>8506</b> <b>227</b> <b>236</b>
---------------------------	------------------------	-----------------------------	---

# ILS or LOC RWY 29

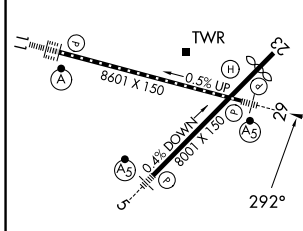
COLUMBIA METRO (CAE)

<p><b>AD</b> For inop ALS, increase S-ILS 29 Cat E visibility to RVR 4000, and S-LOC 29 Cats C/D/E to 1<math>\frac{3}{8}</math> SM. *RVR 1800 authorized with use of FD or AP or HUD to DA.</p>	<p>MALSRL </p>	<p>MISSED APPROACH: Climb to 1000 then climbing left turn to 2300 direct CAE VORTAC and hold, continue climb-in-hold to 2300. (TACAN aircraft continue on CAE VORTAC R-140 to ADCOM INT/10 DME and hold NW, right turn, 140° inbound).</p>
---	--------------------	--

ATIS <b>120.15</b>	COLUMBIA APP CON <b>124.15 338.2</b> (110°-289°) <b>133.4 285.6</b> (290°-109°)	COLUMBIA TOWER <b>119.5 257.8</b>	GND CON <b>121.9 348.6</b>
-----------------------	---	--------------------------------------	-------------------------------



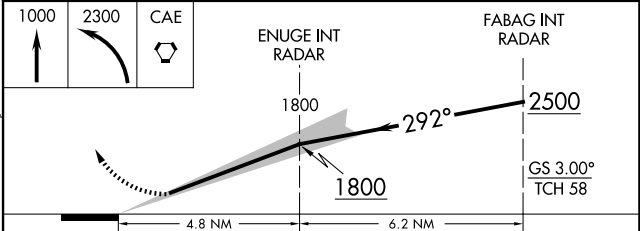
ELEV 236	<b>D</b>	TDZE 227
----------	----------	----------



REIL Rwy 23  
TDZ/CL Rwy 11  
HIRL Rwy 5-23 and 11-29

FAF to MAP 4.8 NM

Knots	60	90	120	150	180
Min:Sec	4:48	3:12	2:24	1:55	1:36



CATEGORY	A	B	C	D	E
S-ILS 29*	427/24 200 (200-1/2)				
S-LOC 29	700/24	473 (500-1/2)	700/50 473 (500-1)		
CIRCLING	740-1 504 (600-1)	860-1 624 (700-1)	1040-2 $\frac{1}{4}$ 804 (900-2 $\frac{1}{4}$ )	1040-2 $\frac{1}{2}$ 804 (900-2 $\frac{1}{2}$ )	1040-2 $\frac{3}{4}$ 804 (900-2 $\frac{3}{4}$ )

SE-2, 16 APR 2026 to 14 MAY 2026

SE-2, 16 APR 2026 to 14 MAY 2026