

WAAS CH <b>40026</b> <b>W23A</b>	APP CRS <b>232°</b>	Rwy Ldg TDZE Apt Elev	<b>7001</b> <b>213</b> <b>236</b>
--	------------------------	-----------------------------	---

# RNAV (GPS) RWY 23

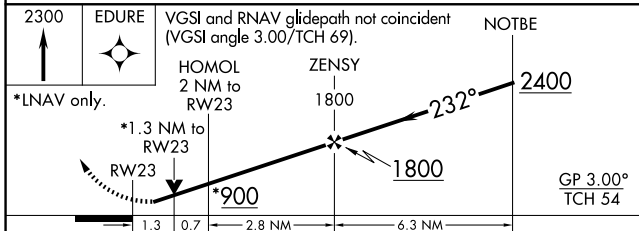
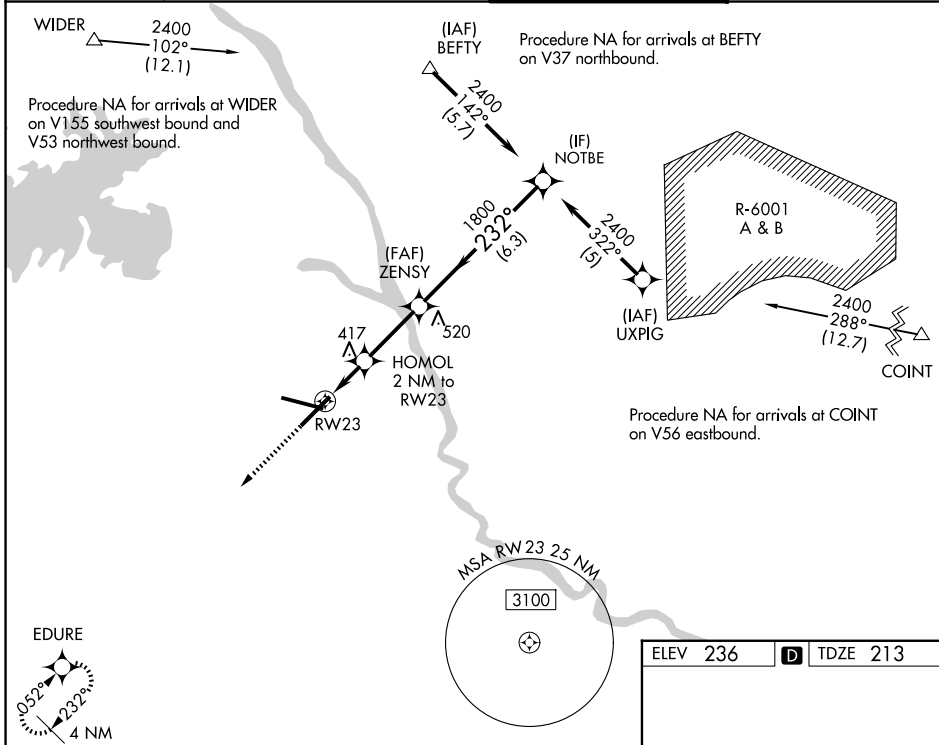
COLUMBIA METRO (CAE)

RNP APCH - GPS.

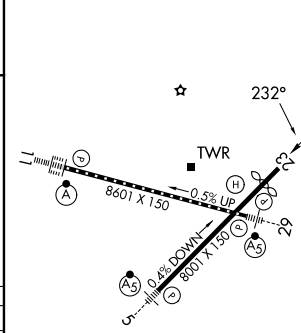
▼ For uncompensated Baro-VNAV systems, LNAV/VNAV NA below -15°C or above 54°C. Rwy 23 helicopter visibility reduction below 3/4 SM NA.

MISSED APPROACH: Climb to 2300 direct EDURE and hold.

ATIS <b>120.15</b>	COLUMBIA APP CON <b>124.15 338.2</b> (110°-289°) <b>133.4 285.6</b> (290°-109°)	COLUMBIA TOWER <b>119.5 257.8</b>	GND CON <b>121.9 348.6</b>
-----------------------	---	--------------------------------------	-------------------------------



ELEV 236	<b>D</b> TDZE 213
----------	-------------------



CATEGORY	A	B	C	D
LPV DA	503/50		290 (300-1)	
LNAV/VNAV DA	709-1 3/4		496 (500-1 3/4)	
LNAV MDA	680/50	467 (500-1)	680/60	680-1 1/2
			467 (500-1 1/4)	467 (500-1 1/2)
CIRCLING	740-1	860-1	1040-2 1/4	1040-2 1/2
	504 (600-1)	624 (700-1)	804 (900-2 1/4)	804 (900-2 1/2)

REIL Rwy 23  
TDZ/CL Rwy 11  
HIRL Rwy 5-23 and 11-29

SE-2, 16 APR 2026 to 14 MAY 2026

SE-2, 16 APR 2026 to 14 MAY 2026