

HI-TACAN W RWY 31L

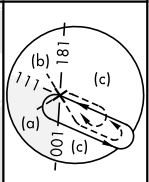
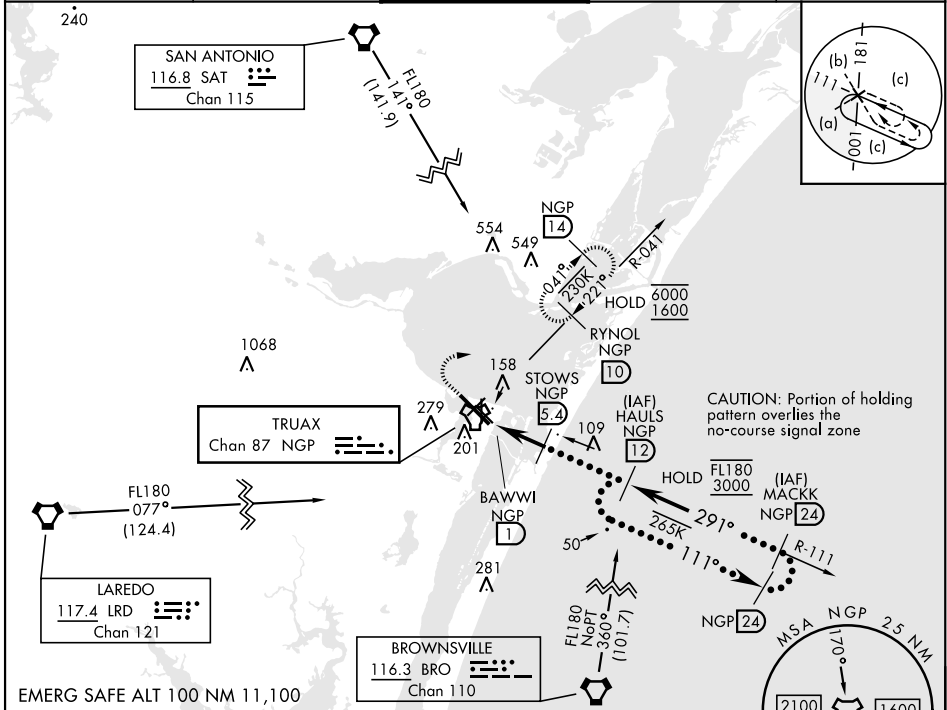
TACAN NGP Chan 87	APCH CRS 291°	Rwy Idg TDZE Arpt Elev	8001 17 18
-----------------------------	-------------------------	------------------------------	---------------------------------------

[USN]

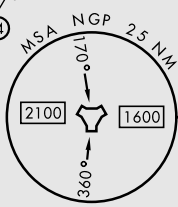
CORPUS CHRISTI NAS (TRUAX FLD) (KNGP)

When local altimeter setting not received, use Corpus Christi (CRP) Inlt altimeter setting. MISSED APPROACH: Climb to 1600 direct NGP TACAN and turn right to intercept R-041 to RYNOL and hold.

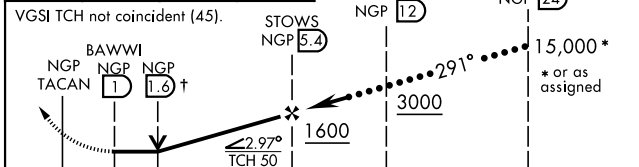
ATIS ★ 127.9 290.9	APP CON 120.9 259.3	NAVY CORPUS TOWER ★ 134.85 340.2	GND CON 118.7 257.85	ASR/PAR
------------------------------	-------------------------------	--	--------------------------------	---------



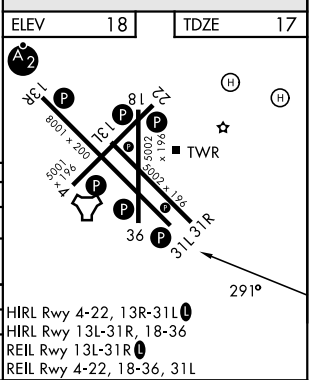
CAUTION: Portion of holding pattern overlies the no-course signal zone



1600	NGP	RYNOL R-041 10	↑VDP not authorized when using Corpus Christi (CRP) Inlt altimeter setting.
------	-----	----------------	---



CATEGORY	C	D	E
S-31L	420-1½	403	(500-1½)
CIRCLING	520-1½ 502 (600-1½)	580-2	562 (600-2)
CORPUS CHRISTI (CRP) INTL ALTIMETER SETTING			
S-31L	460-1¾	443	(500-1¾)
CIRCLING	540-1½ 522 (600-1½)	620-2 602 (700-2)	620-2¼ 602 (700-2¼)



CORPUS CHRISTI, TEXAS 27°42'N-97°17'W CORPUS CHRISTI NAS (TRUAX FLD) (KNGP)

Orig 30NOV23

HI-TACAN W RWY 31L

SC-3, 16 APR 2026 to 14 MAY 2026

SC-3, 16 APR 2026 to 14 MAY 2026