

# HI-TACAN X RWY 13R

TACAN NGP Chan <b>87</b>	APCH CRS <b>147°</b>	Rwy Idg TDZE Arpt Elev	<b>8001</b> <b>13</b> <b>18</b>
-----------------------------	-------------------------	------------------------------	---------------------------------------

[USN]

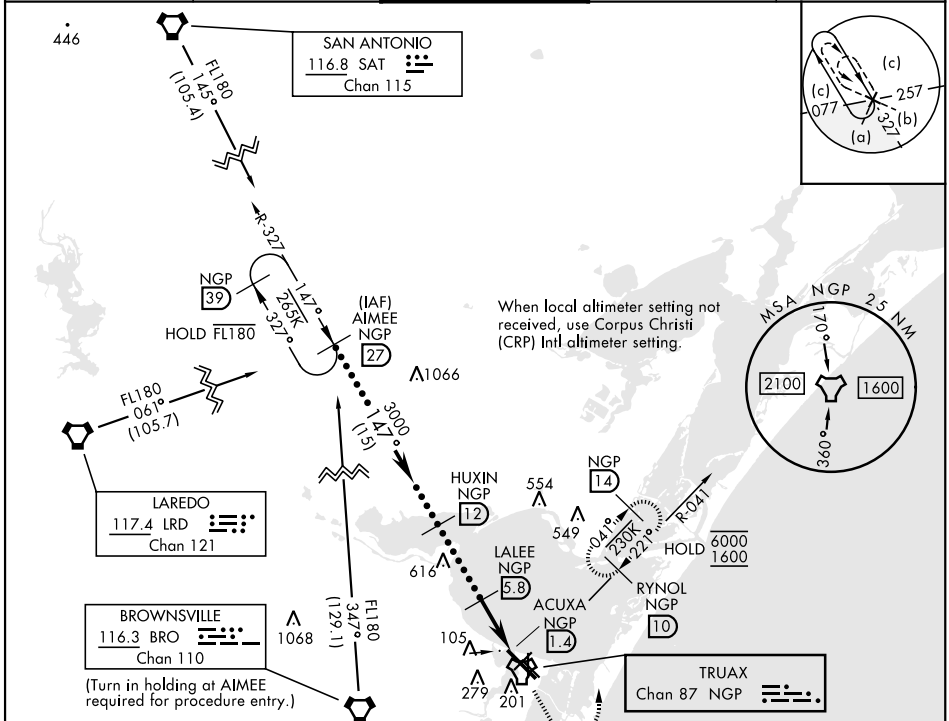
CORPUS CHRISTI NAS (TRUAX FLD) (KNGP)

**V** \*When ALS inop, increase vis to 1½ miles.

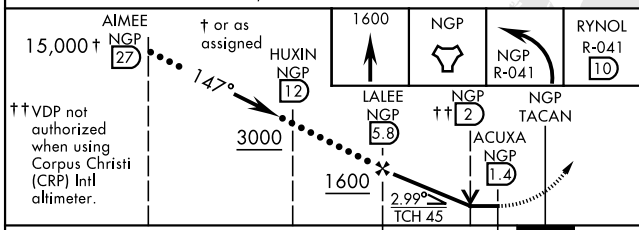
**SALSF** 

**MISSED APPROACH:** Climb to 1600 direct NGP TACAN and turn left to intercept R-041 to RYNOL and hold.

ATIS★ <b>127.9 290.9</b>	APP CON <b>120.9 259.3</b>	NAVY CORPUS TOWER★ <b>134.85 340.2</b>	GND CON <b>118.7 257.85</b>	ASR/PAR
-----------------------------	-------------------------------	---	--------------------------------	---------



EMERG SAFE ALT 100 NM 11,100



CATEGORY	C	D	E
S-13R*	400-7/8	387 (400-7/8)	
CIRCLING	520-1½ 502 (600-1½)	580-2	562 (600-2)
CORPUS CHRISTI (CRP) INTL ALTIMETER SETTING			
S-13R*	420-1	407 (500-1)	
CIRCLING	540-1½ 522 (600-1½)	620-2 602 (700-2)	620-2¼ 602 (700-2¼)

ELEV	18	TDZE	13
------	----	------	----

HIRL Rwy 4-22, 13R-31L 18  
HIRL Rwy 13L-31R, 18-36  
REIL Rwy 13L-31R 18  
REIL Rwy 4-22, 18-36, 31L

# HI-TACAN X RWY 13R

SC-3, 16 APR 2026 to 14 MAY 2026

SC-3, 16 APR 2026 to 14 MAY 2026