

CORPUS CHRISTI, TEXAS

ILS Y or RNAV (GPS) RWY 13R

| | | |
|---|-------------------------|---|
| LOC/DME I-NGP 111.3 Chan 50 | APCH CRS 132° | Rwy Idg TDZE Arpt Elev 8001 13 18 |
|---|-------------------------|---|

[USN]

CORPUS CHRISTI NAS (TRUAX FLD) (KNGP)

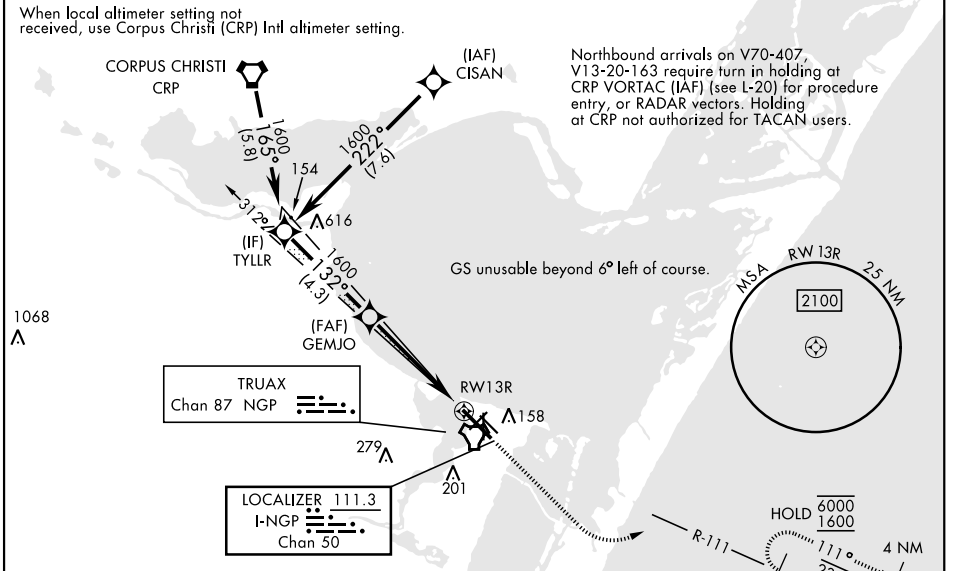
RNP APCH for LNAV.
RNAV1 - GPS for ILS.

▼ *When ALS inop, increase CAT AB vis to 1 mile; CAT CD vis to 1½ miles.

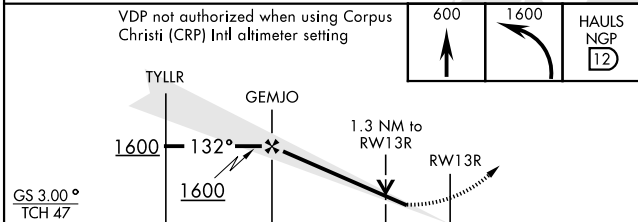
SALSF

MISSED APPROACH: Climb to 600, then climbing left turn to 1600 direct HAULS and hold.

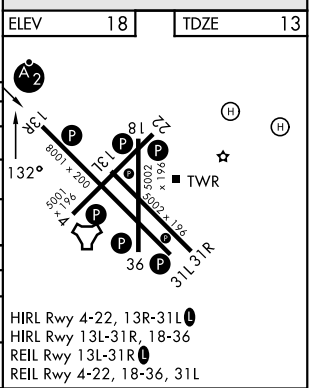
| | | | | |
|------------------------------|-------------------------------|--|--------------------------------|---------|
| ATIS ★ 127.9 290.9 | APP CON 120.9 259.3 | NAVY CORPUS TOWER ★ 134.85 340.2 | GND CON 118.7 257.85 | ASR/PAR |
|------------------------------|-------------------------------|--|--------------------------------|---------|



EMERG SAFE ALT 100 NM 11,100



| CATEGORY | A | B | C | D |
|---|-------------------|---------------------|---------------------|-------------------|
| S-ILS 13R | 213-¾ | 200 | (200-¾) | |
| LNAV MDA* | 460-¾ 447 (500-¾) | 460-1 447 (500-1) | | |
| CIRCLING | 460-1 442 (500-1) | 480-1 462 (500-1) | 520-1½ 502 (600-1½) | 580-2 562 (600-2) |
| CORPUS CHRISTI (CRP) INTL ALTIMETER SETTING | | | | |
| S-ILS 13R | 246-¾ | 233 | (300-¾) | |
| LNAV MDA* | 500-¾ 487 (500-¾) | 500-1½ 487 (500-1½) | | |
| CIRCLING | 500-1 482 (500-1) | 540-1½ 522 (600-1½) | 620-2 602 (700-2) | |



CORPUS CHRISTI, TEXAS
Orig 30NOV23

27°42'N-97°17'W

CORPUS CHRISTI NAS (TRUAX FLD) (KNGP)

ILS Y or RNAV (GPS) RWY 13R

SC-3, 16 APR 2026 to 14 MAY 2026

SC-3, 16 APR 2026 to 14 MAY 2026