

CORPUS CHRISTI, TEXAS

# RNAV (GPS) RWY 22

APCH CRS	Rwy Idg	5001
222°	TDZE	15
	Arprt Elev	18

[USN]

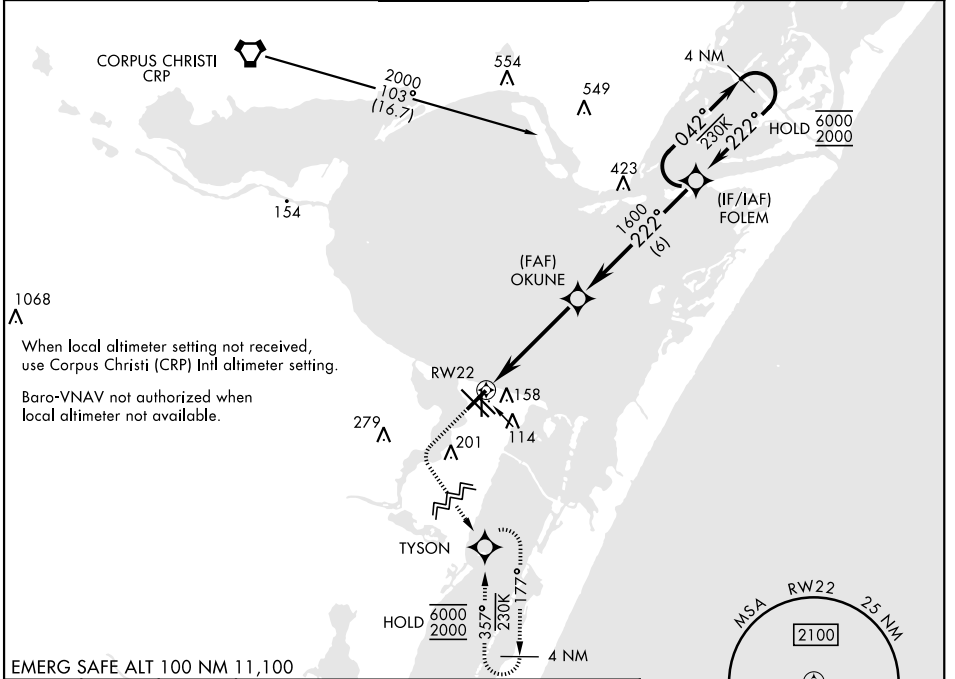
CORPUS CHRISTI NAS (TRUAX FLD) (KNGP)

RNP APCH

▼ For uncompensated Baro-VNAV systems, LNAV/VNAV NA below -15°C (5°F) or above 54°C (129°F).

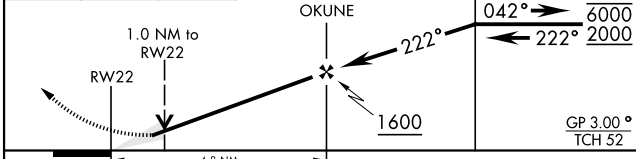
MISSED APPROACH: Climb to 600, then climbing left turn to 2000 direct TYSON and hold.

ATIS ★	APP CON	NAVY CORPUS TOWER ★	GND CON	ASR/PAR
127.9 290.9	120.9 259.3	134.85 340.2	118.7 257.85	

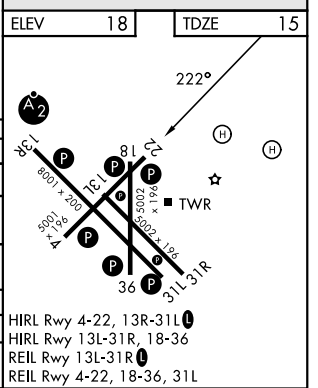
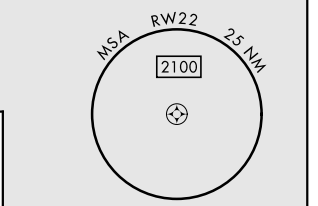


EMERG SAFE ALT 100 NM 11,100

600	2000	TYSON	VDP not authorized when using Corpus Christi (CRP) Intl altimeter setting.	4 NM Holding Pattern
↑	↪	⊙		FOLEM



CATEGORY	A	B	C	D
LNAV MDA	380-1		365 (400-1)	
LNAV/VNAV DA	320-7/8 305 (400-7/8)			380-1 365 (400-1)
CIRCLING	460-1	480-1	520-1 1/2	580-2
	422 (500-1)	462 (500-1)	502 (600-1 1/2)	562 (600-2)
CORPUS CHRISTI (CRP) INTL ALTIMETER SETTING				
LNAV MDA	400-1	385 (400-1)	400-1 1/8	385 (400-1 1/8)
CIRCLING	500-1	482 (500-1)	540-1 1/2	620-2
			522 (600-1 1/2)	602 (700-2)



CORPUS CHRISTI, TEXAS  
Amdt 2 30NOV23

27°42'N-97°17'W

CORPUS CHRISTI NAS (TRUAX FLD) (KNGP)

# RNAV (GPS) RWY 22

SC-3, 16 APR 2026 to 14 MAY 2026

SC-3, 16 APR 2026 to 14 MAY 2026