

CORPUS CHRISTI, TEXAS

# RNAV (GPS) RWY 31L

[USN]

CORPUS CHRISTI NAS (TRUAX FLD) (KNGP)

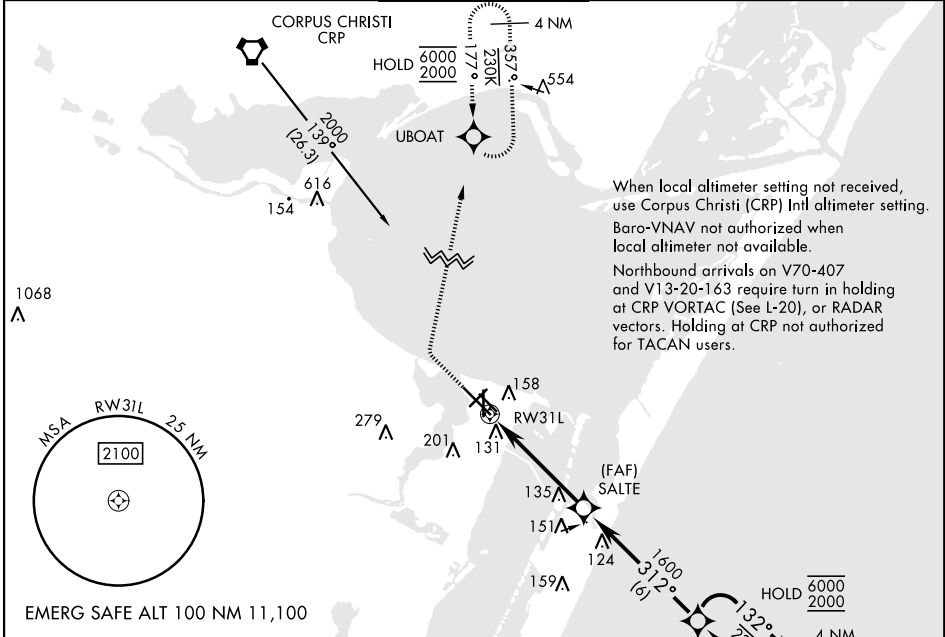
|          |            |      |
|----------|------------|------|
| APCH CRS | Rwy Idg    | 8001 |
| 312°     | TDZE       | 17   |
|          | Arprt Elev | 18   |

RNP APCH

MISSED APPROACH: Climb to 600, then climbing right turn to 2000 direct UBOAT and hold.

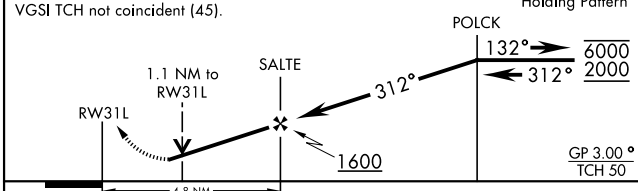
For uncompensated Baro-VNAV systems, LNAV/VNAV NA below -15°C (5°F) or above 54°C (129°F).

|             |             |                     |              |         |
|-------------|-------------|---------------------|--------------|---------|
| ATIS ★      | APP CON     | NAVY CORPUS TOWER ★ | GND CON      | ASR/PAR |
| 127.9 290.9 | 120.9 259.3 | 134.85 340.2        | 118.7 257.85 |         |



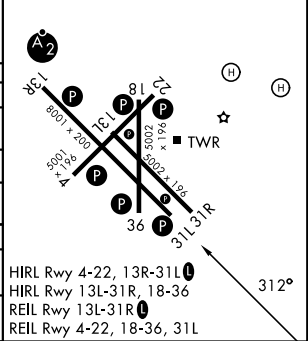
|     |      |       |   |
|-----|------|-------|---|
| 600 | 2000 | UBOAT | VDP not authorized when using Corpus Christi (CRP) Intl altimeter setting |
|-----|------|-------|---|

↑ VGSi TCH not coincident (45).



| CATEGORY                                    | A                    | B                    | C                     | D                    |
|---|----------------------|----------------------|-----------------------|----------------------|
| LNAV/VNAV DA                                | 412-1½               |                      | 395                   | (400-1½)             |
| LNAV MDA                                    | 420-1                | 403 (500-1)          | 420-1½                | 403 (500-1½)         |
| CIRCLING                                    | 460-1<br>442 (500-1) | 480-1<br>462 (500-1) | 520-1½<br>502 (600-½) | 580-2<br>562 (600-2) |
| CORPUS CHRISTI (CRP) INTL ALTIMETER SETTING |                      |                      |                       |                      |
| LNAV MDA                                    | 460-1                | 443 (500-1)          | 460-1½                | 443 (500-1½)         |
| CIRCLING                                    | 500-1                | 482 (500-1)          | 540-1½<br>522 (600-½) | 620-2<br>602 (700-2) |

|      |    |      |    |
|------|----|------|----|
| ELEV | 18 | TDZE | 17 |
|------|----|------|----|



CORPUS CHRISTI, TEXAS  
Amdt 2 30NOV23

27°42'N-97°17'W

CORPUS CHRISTI NAS (TRUAX FLD) (KNGP)

# RNAV (GPS) RWY 31L

SC-3, 16 APR 2026 to 14 MAY 2026

SC-3, 16 APR 2026 to 14 MAY 2026