

CORPUS CHRISTI, TEXAS

RNAV (GPS) RWY 31R

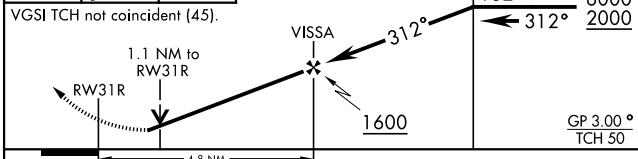
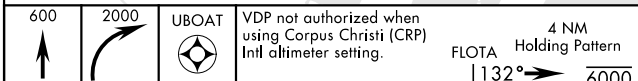
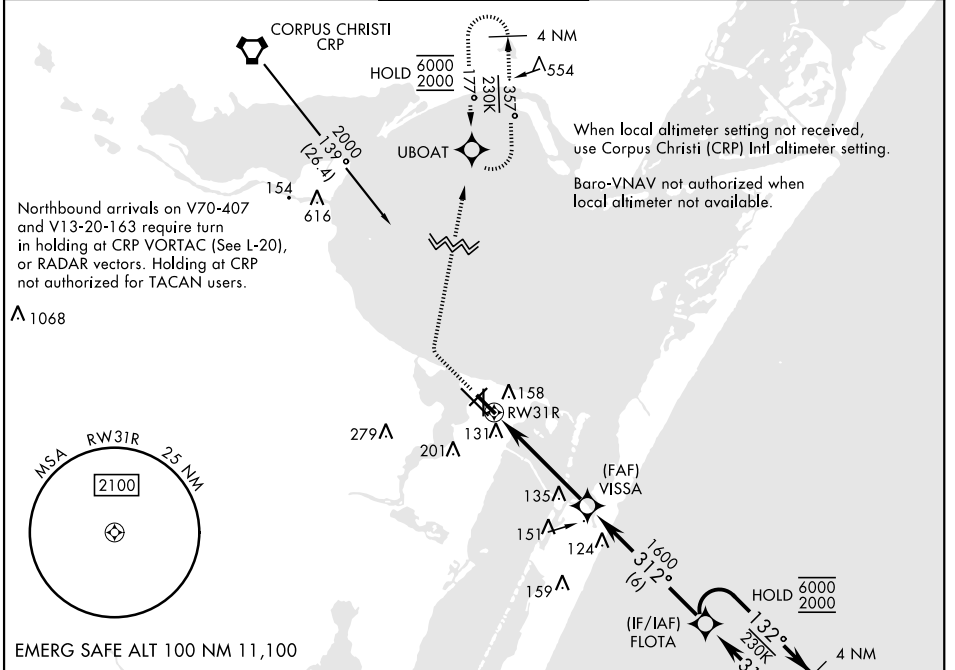
APCH CRS	Rwy ldg	5002
312°	TDZE	18
	Arprt Elev	18

[USN]

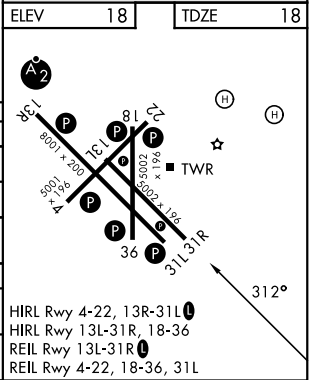
CORPUS CHRISTI NAS (TRUAX FLD) (KNGP)

RNP APCH	MISSED APPROACH: Climb to 600, then climbing right turn to 2000 direct UBOAT and hold.		
<p>▼ For uncompensated Baro-VNAV systems, LNAV/VNAV NA below -15° C (5° F) or above 54° C (129° F).</p>			

ATIS ★	APP CON	NAVY CORPUS TOWER ★	GND CON	ASR/PAR
127.9 290.9	120.9 259.3	134.85 340.2	118.7 257.85	



CATEGORY	A	B	C	D
LNAV/VNAV DA	411-1½		393	(400-1½)
LNAV MDA	420-1	402 (500-1)	420-1½	402 (500-1½)
CIRCLING	460-1	480-1	520-1½	580-2
	442 (500-1)	462 (500-1)	502 (600-1½)	562 (600-2)
CORPUS CHRISTI (CRP) INTL ALTIMETER SETTING				
LNAV MDA	460-1	442 (500-1)	460-1½	442 (500-1½)
CIRCLING	500-1	482 (500-1)	540-1½	620-2
			522 (600-1½)	602 (700-2)



CORPUS CHRISTI, TEXAS
Amdt 2 25JAN24

27°42'N-97°17'W

CORPUS CHRISTI NAS (TRUAX FLD) (KNGP)

RNAV (GPS) RWY 31R

SC-3, 16 APR 2026 to 14 MAY 2026

SC-3, 16 APR 2026 to 14 MAY 2026