

CORPUS CHRISTI, TEXAS

# TACAN RWY 36

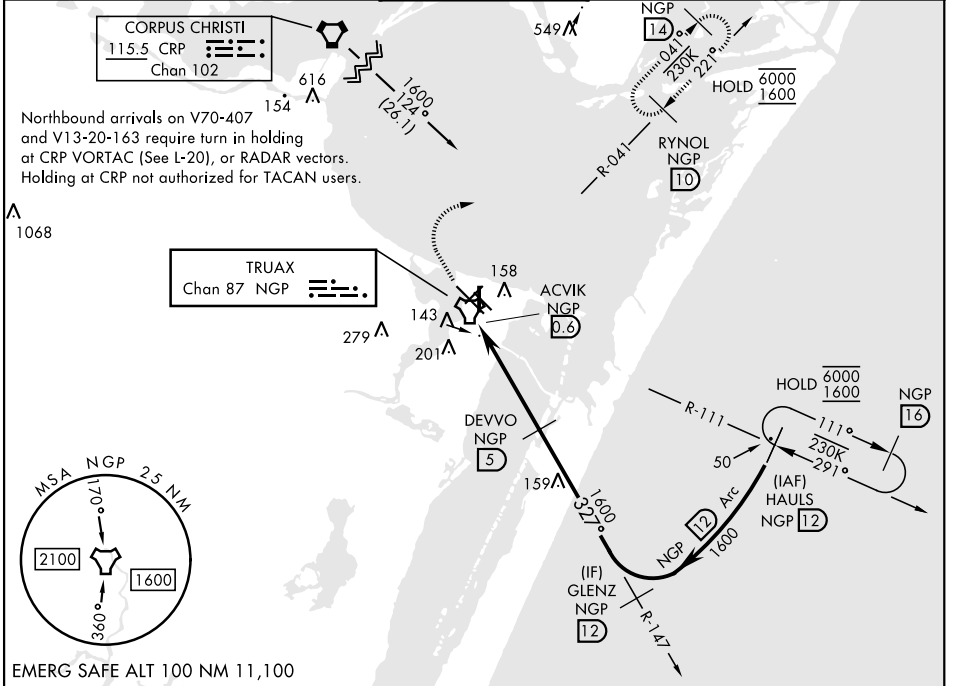
TACAN NGP Chan <b>87</b>	APCH CRS <b>327°</b>	Rwy Idg TDZE Arprt Elev	<b>5002</b> <b>18</b> <b>18</b>
-----------------------------	-------------------------	-------------------------------	---------------------------------------

[USN]

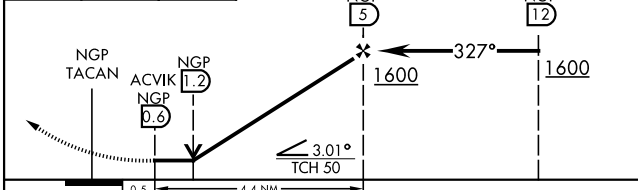
CORPUS CHRISTI NAS (TRUAX FLD) (KNGP)

**▼** When local altimeter setting not received, use Corpus Christi (CRP) Intl altimeter setting. MISSED APPROACH: Climb to 1600 direct NGP TACAN and turn right to intercept R-041 to RYNOL and hold.

ATIS★ <b>127.9 290.9</b>	APP CON <b>120.9 259.3</b>	NAVY CORPUS TOWER★ <b>134.85 340.2</b>	GND CON <b>118.7 257.85</b>	ASR/PAR
-----------------------------	-------------------------------	---	--------------------------------	---------

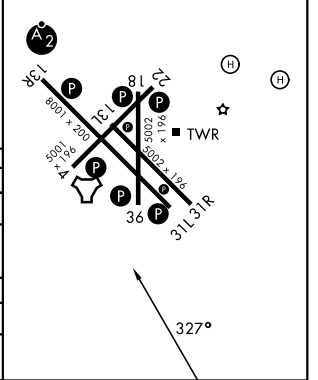


1600 NGP R-041  
VDP not authorized when using Corpus Christi (CRP) Intl altimeter setting.



CATEGORY	A	B	C	D
S-36	400-1 382 (400-1)		400-1 382 (400-1)	
CIRCLING	460-1	480-1	520-1 1/2	580-2
	442 (500-1)	462 (500-1)	502 (600-1 1/2)	562 (600-2)
CORPUS CHRISTI (CRP) INTL ALTIMETER SETTING				
S-36	440-1	422 (500-1)	440-1 1/4	422 (500-1 1/2)
CIRCLING	500-1	482 (500-1)	540-1 1/2	620-2
			522 (600-1 1/2)	602 (700-2)

TDZE 18  
HIRL Rwy 4-22, 13R-31L  
HIRL Rwy 13L-31R, 18-36  
REIL Rwy 13L-31R  
REIL Rwy 4-22, 18-36, 31L



CORPUS CHRISTI, TEXAS 27°42'N-97°17'W CORPUS CHRISTI NAS (TRUAX FLD) (KNGP)

Amdt 2 30NOV23

# TACAN RWY 36

SC-3, 16 APR 2026 to 14 MAY 2026

SC-3, 16 APR 2026 to 14 MAY 2026