

CORPUS CHRISTI, TEXAS

TACAN X RWY 31L

TACAN NGP Chan 87	APCH CRS 291°	Rwy Idg TDZE Arpt Elev	8001 17 18
-----------------------------	-------------------------	------------------------------	---------------------------------------

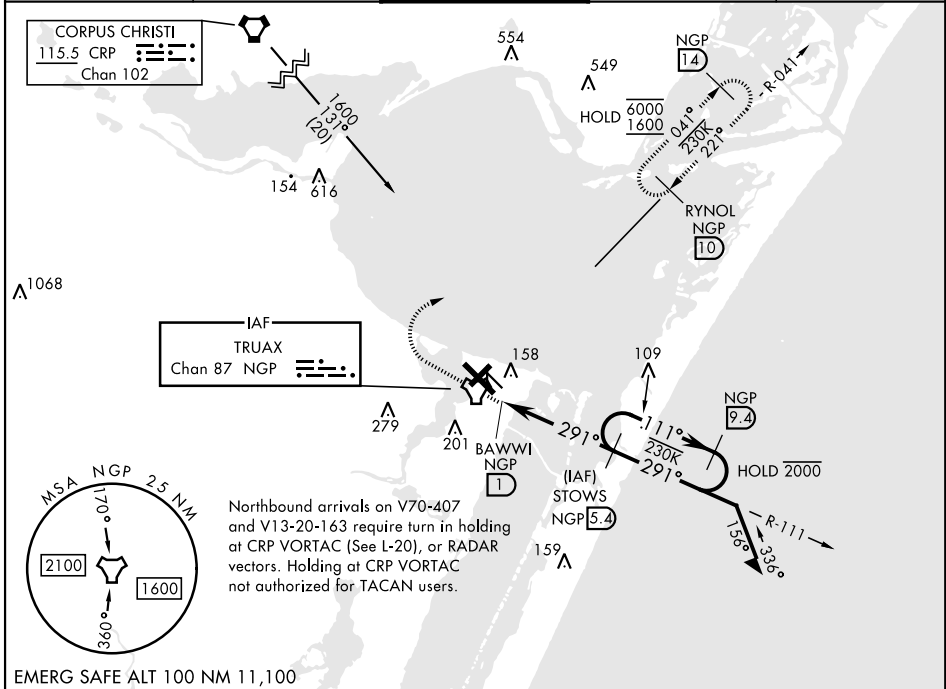
[USN]

CORPUS CHRISTI NAS (TRUAX FLD) (KNGP)

When local altimeter setting not received, use Corpus Christi (CRP) Intl altimeter setting.

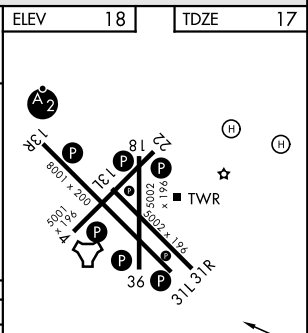
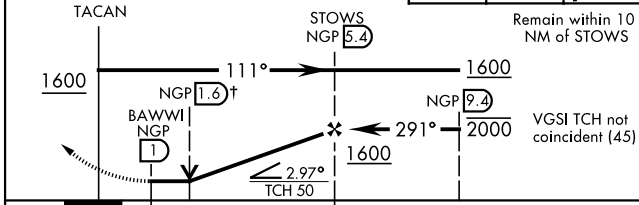
MISSED APPROACH: Climb to 1600 direct NGP TACAN and turn right to intercept R-041 to RYNOL and hold.

ATIS★ 127.9 290.9	APP CON 120.9 259.3	NAVY CORPUS TOWER★ 134.85 340.2	GND CON 118.7 257.85	ASR/PAR
-----------------------------	-------------------------------	---	--------------------------------	---------



EMERG SAFE ALT 100 NM 11,100

↑ VDP not authorized when using Corpus Christi (CRP) Intl altimeter setting.	1600	NGP	NGP R-041	ELEV 18	TDZE 17
--	------	-----	-----------	---------	---------



CATEGORY	A	B	C	D
S-31L	420-1 403 (500-1)	420-1 403 (500-1)	420-1 403 (500-1)	420-1 403 (500-1)
CIRCLING	460-1 442 (500-1)	480-1 462 (500-1)	520-1 502 (600-1 1/2)	580-2 562 (600-2)
CORPUS CHRISTI (CRP) INTL ALTIMETER SETTING				
S-31L	460-1 443 (500-1)	460-1 443 (500-1)	460-1 443 (500-1)	460-1 443 (500-1)
CIRCLING	500-1 482 (500-1)	540-1 522 (600-1 1/2)	540-1 522 (600-1 1/2)	620-2 602 (700-2)

FAF to MAP 4.4 NM					
Knots	60	90	120	150	180
Min:Sec	4:24	2:56	2:12	1:46	1:28

CORPUS CHRISTI, TEXAS 27° 42' N-97° 17' W CORPUS CHRISTI NAS (TRUAX FLD) (KNGP)

Amdt 2 30NOV23

TACAN X RWY 31L

SC-3, 16 APR 2026 to 14 MAY 2026

SC-3, 16 APR 2026 to 14 MAY 2026