

# TACAN Z RWY 13R

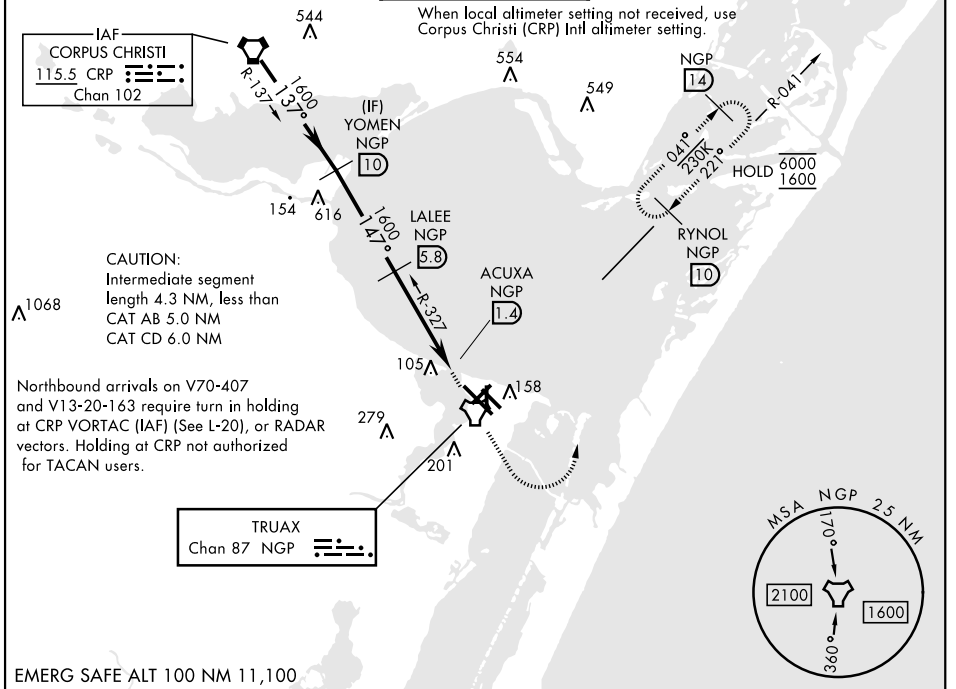
TACAN NGP Chan <b>87</b>	APCH CRS <b>147°</b>	Rwy ldg TDZE Arpt Elev	<b>8001</b> <b>13</b> <b>18</b>
-----------------------------	-------------------------	------------------------------	---------------------------------------

[USN]

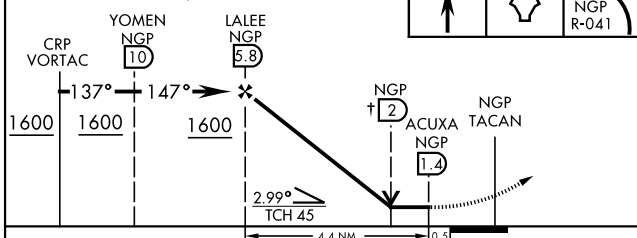
CORPUS CHRISTI NAS (TRUAX FLD) (KNGP)

<p>▼ * When ALS inop, increase CAT AB vis to 1 mile, CAT CD vis to 1 1/8 miles.</p>	SALSF	MISSED APPROACH: Climb to 1600 direct NGP TACAN and turn left to intercept R-041 to RYNOL and hold.

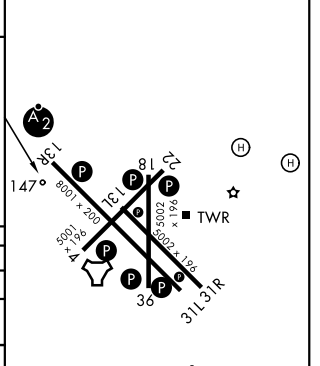
ATIS ★ <b>127.9 290.9</b>	APP CON <b>120.9 259.3</b>	NAVY CORPUS TOWER ★ <b>134.85 340.2</b>	GND CON <b>118.7 257.85</b>	ASR/PAR
------------------------------	-------------------------------	--	--------------------------------	---------



† VDP not authorized when using Corpus Christi (CRP) Intl altimeter



ELEV	18	TDZE	13
------	----	------	----



CATEGORY	A	B	C	D
S-13R *	400-3/4	387 (400-3/4)	400-7/8	387 (400-7/8)
CIRCLING	460-1 442 (500-1)	480-1 462 (500-1)	520-1 1/2 502 (600-1 1/2)	580-2 562 (600-2)
CORPUS CHRISTI (CRP) INTL ALTIMETER SETTING				
S-13R *	420-3/4	407 (500-3/4)	420-1	407 (500-1)
CIRCLING	500-1	482 (500-1)	540-1 1/2 522 (600-1 1/2)	620-2 602 (700-2)

HRL Rwy 4-22, 13R-311L

HRL Rwy 13L-31R, 18-36

REIL Rwy 13L-31R

REIL Rwy 4-22, 18-36, 31L

# TACAN Z RWY 13R

SC-3, 16 APR 2026 to 14 MAY 2026

SC-3, 16 APR 2026 to 14 MAY 2026