

CORPUS CHRISTI, TEXAS

VOR/DME or TACAN Y RWY 13R

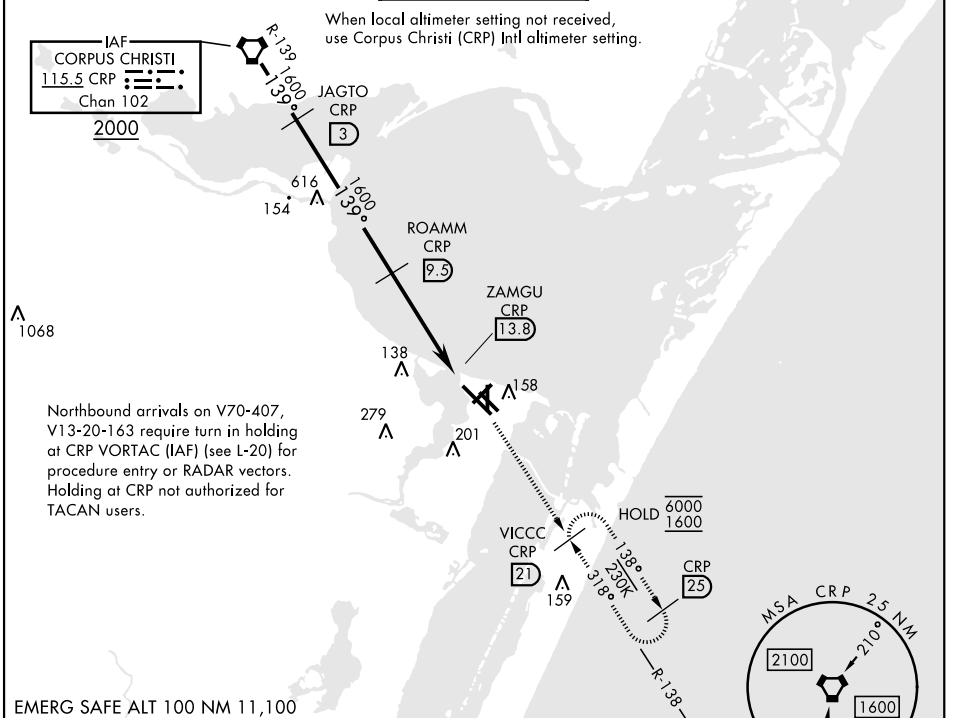
VORTAC CRP 115.5 Chan 102	APCH CRS 139°	Rwy Idg 8001 TDZE 13 Arpt Elev 18
---	-------------------------	--

[USN]

CORPUS CHRISTI NAS (TRUAX FLD) (KNGP)

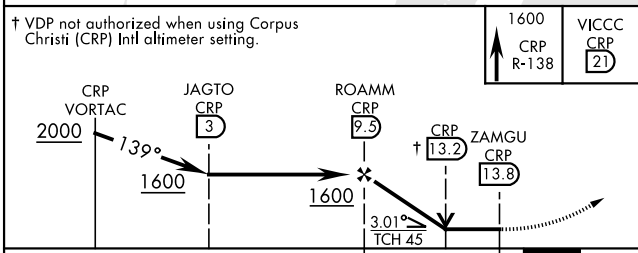
<p>▼ * When ALS inop, increase CAT AB vis to 1 mile, CAT CD vis to 1½ miles. ** When ALS inop, increase CAT AB vis to 1 mile, CAT CD vis to 1¾ miles.</p>	<p>SALSF A2</p>	<p>MISSED APPROACH: Climb to 1600 on CRP VORTAC R-138 to VICCC and hold.</p>
---	---------------------	--

<p>ATIS ★ 127.9 290.9</p>	<p>APP CON 120.9 259.3</p>	<p>NAVY CORPUS TOWER ★ 134.85 340.2</p>	<p>GND CON 118.7 257.85</p>	<p>ASR/PAR</p>
--------------------------------------	---------------------------------------	--	--	----------------

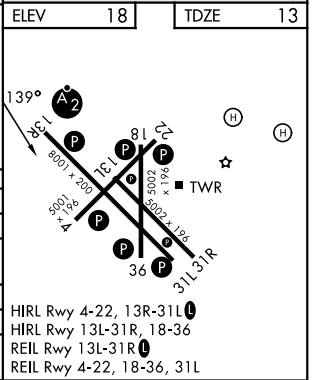


EMERG SAFE ALT 100 NM 11,100

† VDP not authorized when using Corpus Christi (CRP) Intl altimeter setting.



CATEGORY	A	B	C	D
S-13R *	420-¾ 407	500-¾ 480-1	420-1 407	500-1
CIRCLING	460-1 442 (500-1)	480-1 462 (500-1)	520-1½ 502 (600-1½)	580-2 562 (600-2)
CORPUS CHRISTI (CRP) INTL ALTIMETER SETTING				
S-13R **	460-¾ 447	500-1¾ 482	460-1 447	500-1
CIRCLING	500-1 482 (500-1)	540-1½ 522 (600-1½)	620-2 602 (700-2)	



CORPUS CHRISTI, TEXAS
Amdt 2 30NOV23

27°42'N-97°17'W

CORPUS CHRISTI NAS (TRUAX FLD) (KNGP)

VOR/DME or TACAN Y RWY 13R

SC-3, 16 APR 2026 to 14 MAY 2026

SC-3, 16 APR 2026 to 14 MAY 2026