

TRMML FOUR DEPARTURE (RNAV) Departure Routes

**TOP ALTITUDE:
17000**



DETROIT DEP CON
 125.525 284.0 (Rwys 22L/R, 27L/R)
 132.025 284.0 (Rwys 3L/R, 4L/R, 21L/R)
 D-ATIS 118.125
 CLNC DEL 120.65
 CPDLC
 GND CON
 121.8 (NW) 119.45 (NE)
 132.725 (SW) 119.25 (SE)
 METRO TOWER
 118.4 317.725 (Rwys 3L/R, 21L/R, 27R)
 128.75 317.725 (Rwy 27L)
 135.0 317.725 (Rwys 4L/R, 22L/R)

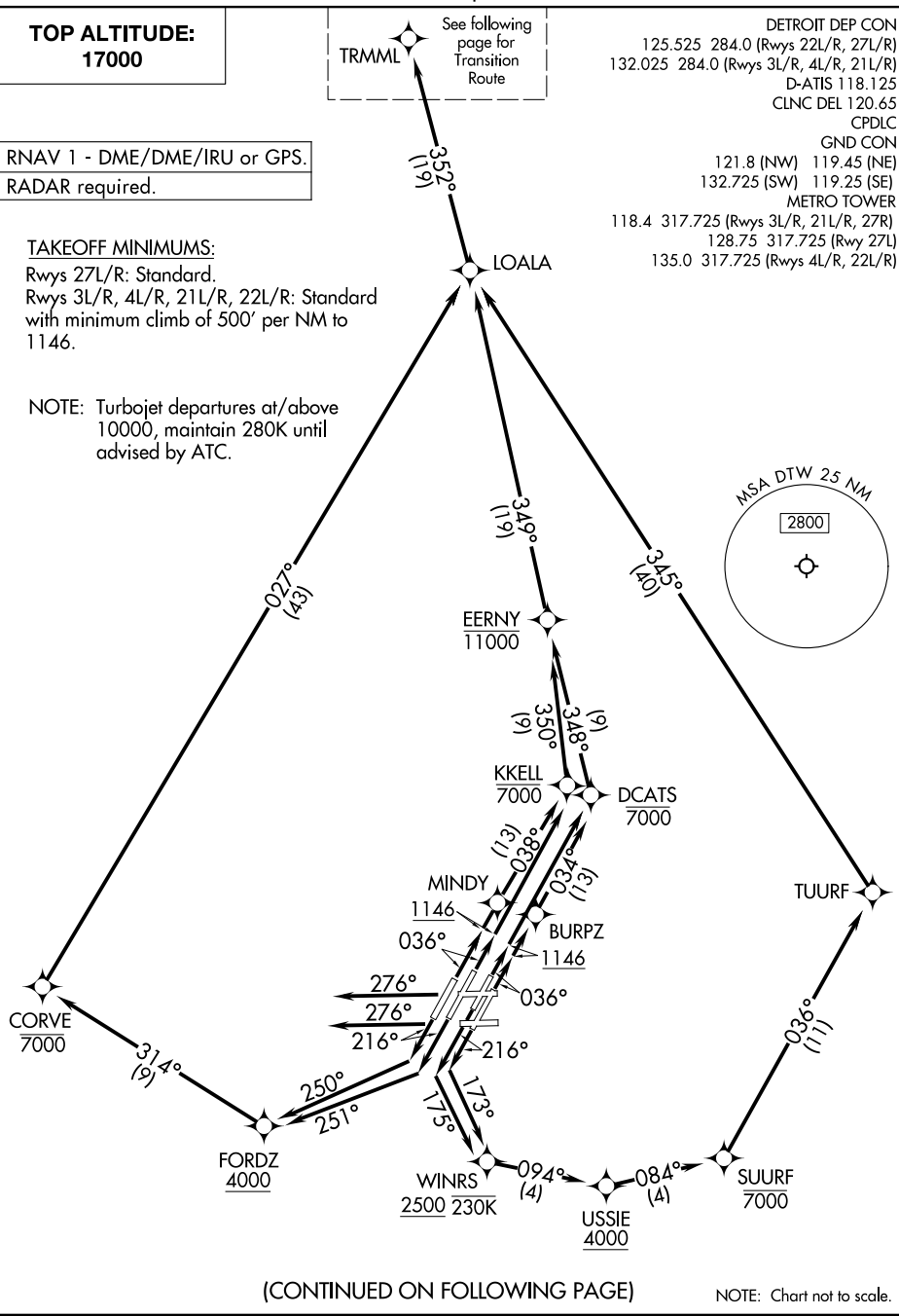
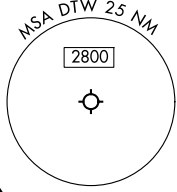
RNAV 1 - DME/DME/IRU or GPS.

RADAR required.

TAKEOFF MINIMUMS:

Rwys 27L/R: Standard.
 Rwys 3L/R, 4L/R, 21L/R, 22L/R: Standard
 with minimum climb of 500' per NM to
 1146.

NOTE: Turbojet departures at/above
 10000, maintain 280K until
 advised by ATC.



(CONTINUED ON FOLLOWING PAGE)

NOTE: Chart not to scale.

EC-1, 16 APR 2026 to 14 MAY 2026

EC-1, 16 APR 2026 to 14 MAY 2026