

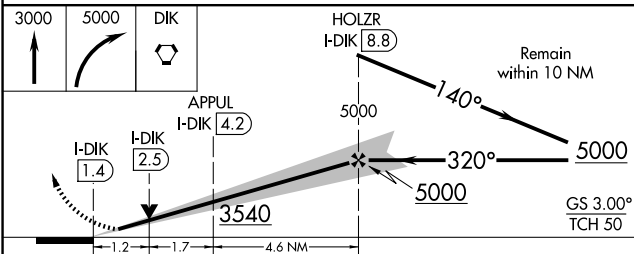
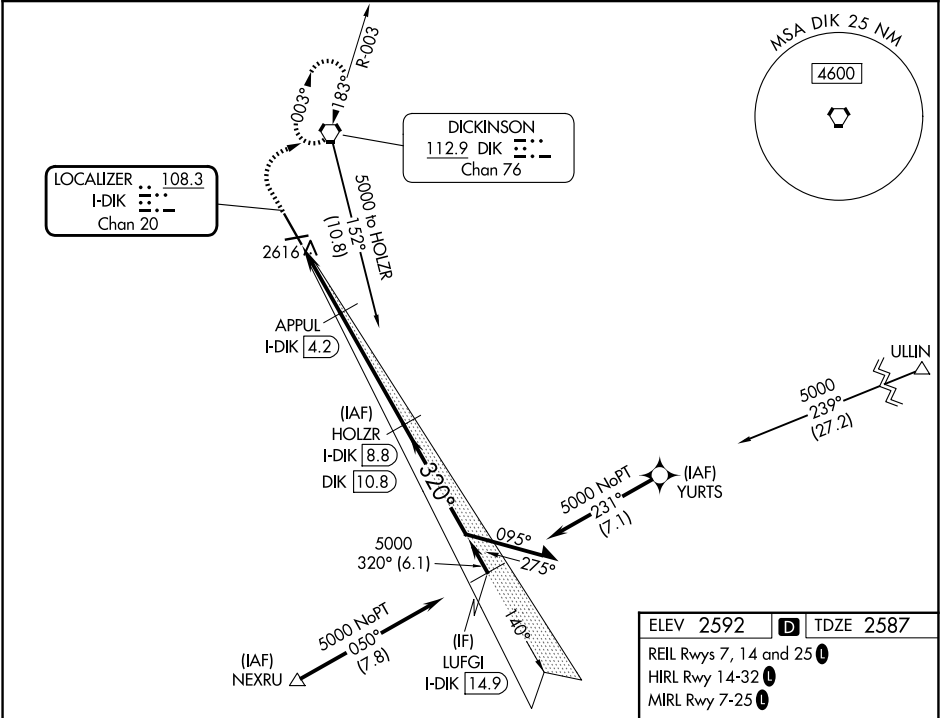
LOC/DME I-DIK <b>108.3</b> Chan 20	APP CRS <b>320°</b>	Rwy Ldg TDZE Apt Elev	<b>7301</b> <b>2587</b> <b>2592</b>
--	------------------------	-----------------------------	---

# ILS or LOC RWY 32

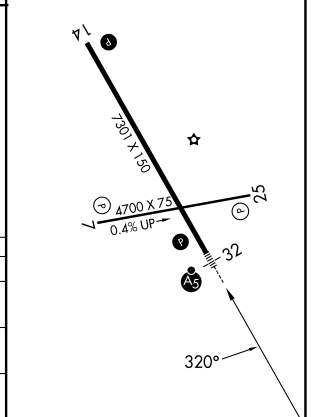
DICKINSON/THEODORE ROOSEVELT RGNL (DIK)

DME required.	MALSR	MISSED APPROACH: Climb to 3000, then climbing right turn to 5000 direct DIK VORTAC and hold, continue climb-in-hold to 5000.
RNP APCH - GPS. From NEXRU or YURTS.		
Use I-DIK DME when on the localizer course. For inop ALS, increase S-LOC 32 Cat C/D visibility to 1/2 SM.		

ASOS <b>118.375</b>	MINNEAPOLIS CENTER <b>124.25 236.825</b>	UNICOM <b>123.0 (CTAF)</b>
------------------------	---	-------------------------------



ELEV 2592		TDZE 2587
REIL Rwy 7, 14 and 25		
HIRL Rwy 14-32		
MIRL Rwy 7-25		



CATEGORY	A	B	C	D
S-ILS 32		2787-1/2	200 (200-1/2)	
S-LOC 32	3000-1/2	413 (500-1/2)	3000-3/4	413 (500-3/4)
CIRCLING	3060-1	468 (500-1)	3120-1 1/2 528 (600-1 1/2)	3200-2 608 (700-2)

NC-1, 16 APR 2026 to 14 MAY 2026

NC-1, 16 APR 2026 to 14 MAY 2026