

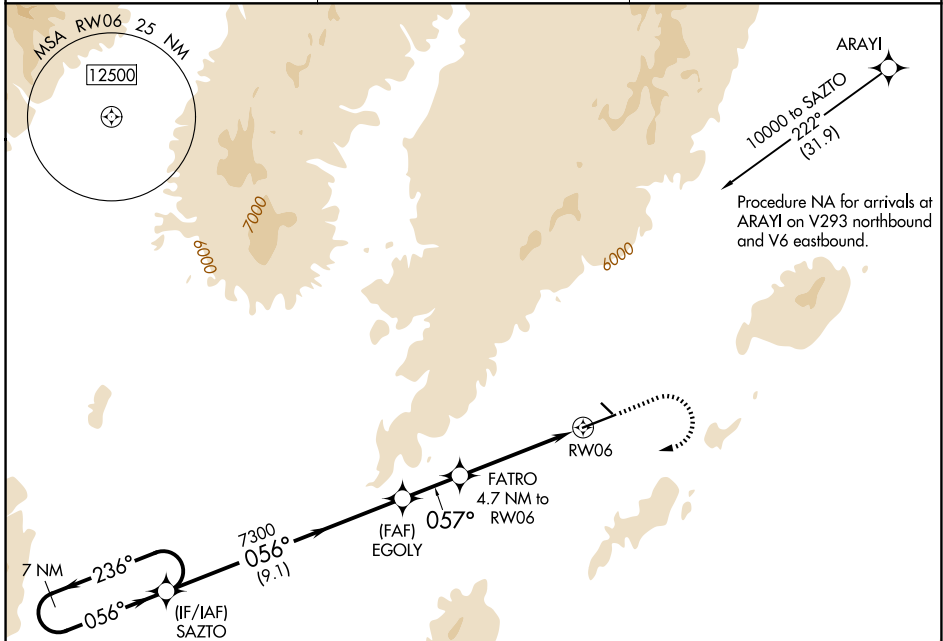
APP CRS	Rwy Ldg	<b>7217</b>
<b>057°</b>	TDZE	<b>5051</b>
	Apt Elev	<b>5140</b>

# RNAV (GPS) RWY 6

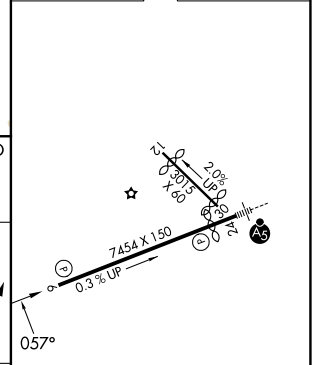
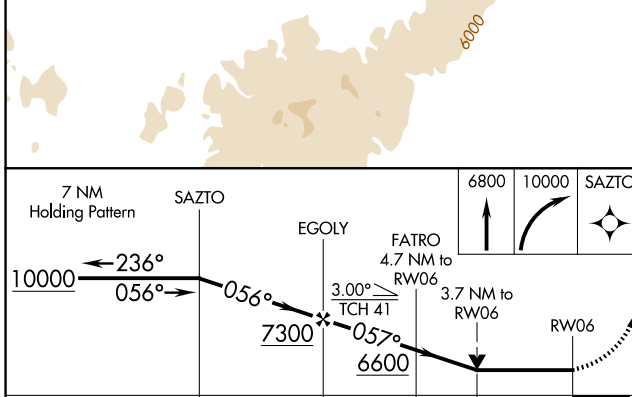
ELKO RGNL (EKO)

RNP APCH.	MISSED APPROACH: Climb to 6800 then climbing right turn to 10000 direct SAZTO and hold, continue climb-in-hold to 10000.
<p><b>▼</b> Circling Rwy 24 NA at night.</p> <p><b>⚠</b> Rwy 6 helicopter visibility reduction below 3/4 SM NA.</p> <p><b>❄</b> -25°C</p>	

ASOS <b>119.275</b>	SALT LAKE CENTER <b>132.25 338.35</b>	UNICOM <b>123.0 (CTAF) 0</b>
------------------------	------------------------------------------	---------------------------------



ELEV 5140	<b>D</b> TDZE 5051
-----------	--------------------



CATEGORY	A	B	C	D
LNVA MDA	6280-1¼ 1229 (1200-1¼)	6280-1½ 1229 (1200-1½)	6280-3	1229 (1200-3)
CIRCLING	6280-1¼ 1140 (1200-1¼)	6280-1½ 1140 (1200-1½)	6640-3 1500 (1500-3)	6960-3 1820 (1900-3)

MIRL Rwy 6-24 **0**

SW-4, 16 APR 2026 to 14 MAY 2026

SW-4, 16 APR 2026 to 14 MAY 2026