

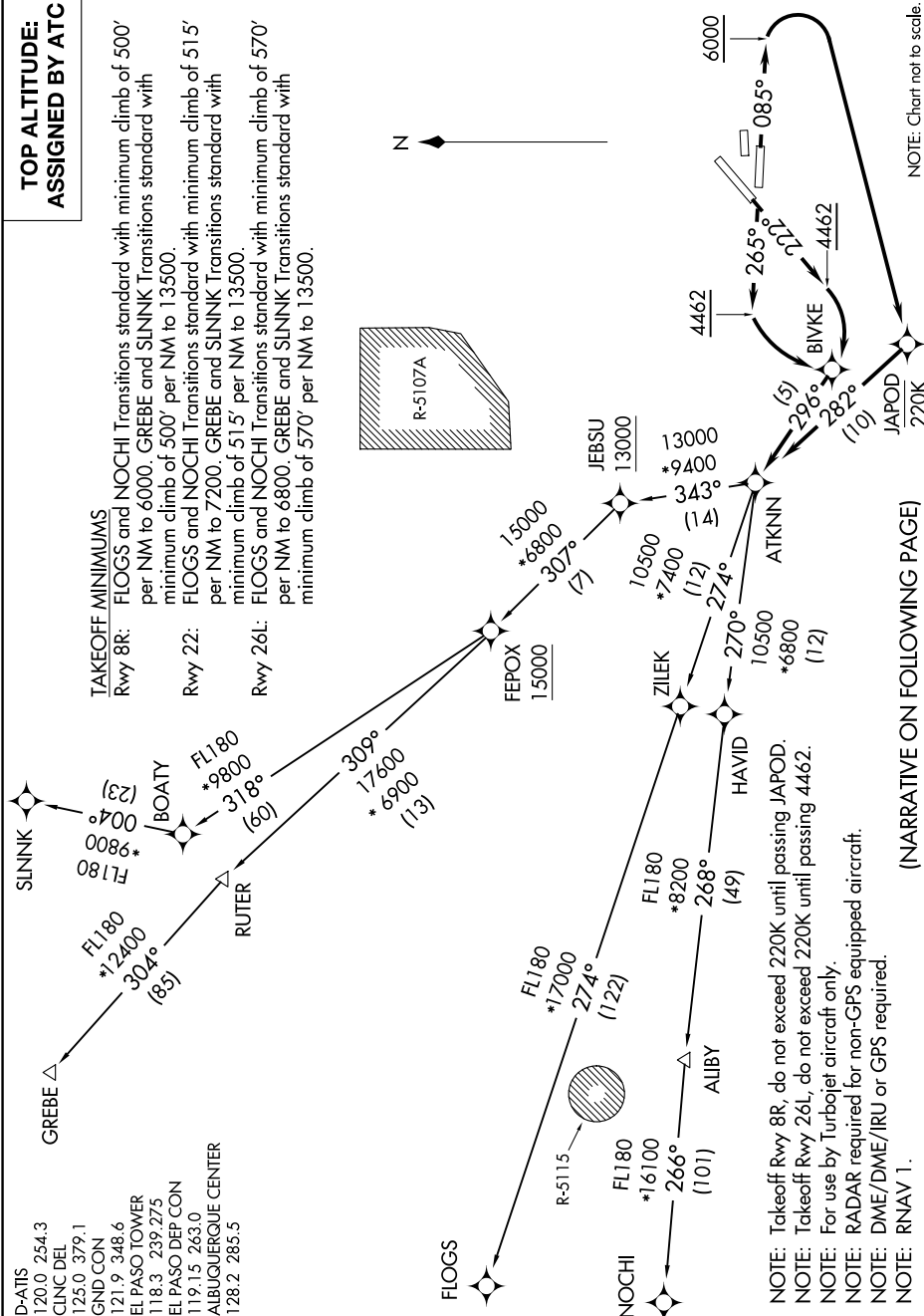
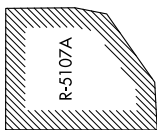
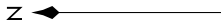
ATKNN FIVE DEPARTURE (RNAV)

SC-3, 16 APR 2026 to 14 MAY 2026

TOP ALTITUDE: ASSIGNED BY ATC

TAKEOFF MINIMUMS
 Rwy 8R: FLOGS and NOCHI Transitions standard with minimum climb of 500' per NM to 6000. GREBE and SLINK Transitions standard with minimum climb of 500' per NM to 13500.
 Rwy 22: FLOGS and NOCHI Transitions standard with minimum climb of 515' per NM to 7200. GREBE and SLINK Transitions standard with minimum climb of 515' per NM to 13500.
 Rwy 26L: FLOGS and NOCHI Transitions standard with minimum climb of 570' per NM to 6800. GREBE and SLINK Transitions standard with minimum climb of 570' per NM to 13500.

- D-ATIS 120.0 254.3
- CLNC DEL 125.0 379.1
- GND CON 121.9 348.6
- EL PASO TOWER 118.3 239.275
- EL PASO DEP CON 119.15 263.0
- ALBUQUERQUE CENTER 128.2 285.5



NOTE: Chart not to scale.

(NARRATIVE ON FOLLOWING PAGE)

- NOTE: Takeoff Rwy 8R, do not exceed 220K until passing JAPOD.
- NOTE: Takeoff Rwy 26L, do not exceed 220K until passing 4462.
- NOTE: For use by Turbojet aircraft only.
- NOTE: RADAR required for non-GPS equipped aircraft.
- NOTE: DME/DME/IRU or GPS required.
- NOTE: RNAV 1.

SC-3, 16 APR 2026 to 14 MAY 2026

ATKNN FIVE DEPARTURE (RNAV)

(ATKNN5.ATKNN) 21JUL16