

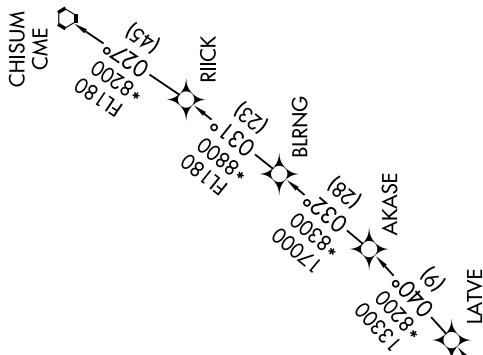
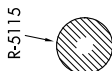
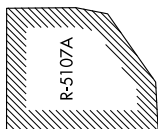
LATVE THREE DEPARTURE (RNAV)

SC-3, 16 APR 2026 to 14 MAY 2026

TOP ALTITUDE: ASSIGNED BY ATC

TAKEOFF MINIMUMS
Rwys 4, 8R, 22, 26L: Standard with a
minimum climb of 500' per NM to 11000.

D-ATIS
120.0 254.3
CINC DEL
125.0 379.1
GND CON
121.9 348.6
EL PASO TOWER
118.3 239.275
EL PASO DEP CON
119.15 263.0
ALBUJERQUE CENTER
135.875 292.15



NOTE: DME/DME/IRU or GPS required.
NOTE: RNAV 1.
NOTE: For use by Turbojet aircraft only.
NOTE: RADAR required for non-GPS equipped aircraft.
NOTE: Takeoff Rwy 8R, maintain 250K until passing CATEG.

(NARRATIVE ON FOLLOWING PAGE)

NOTE: Chart not to scale.

SC-3, 16 APR 2026 to 14 MAY 2026

LATVE THREE DEPARTURE (RNAV)