

ENID, OKLAHOMA

RNAV (GPS) RWY 17L

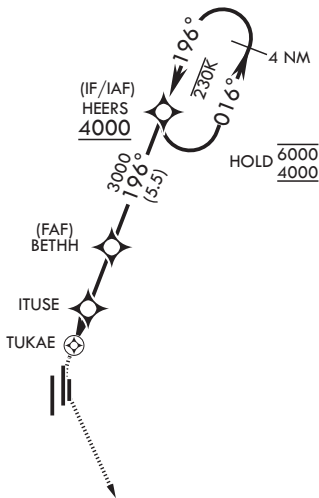
APCH CRS 196°	Rwy Idg 5024
	TDZE 1282
	Arprt Elev 1307

(USAF)

VANCE AFB (KEND)

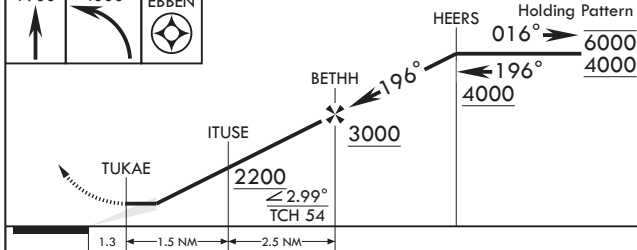
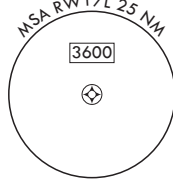
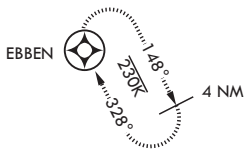
RNP APCH	MISSED APPROACH: Climb to 1900 then climbing left turn to 4000 direct EBBEN and hold.
----------	---

ATIS★ 115.4 263.15	APP CON 125.45 388.2 (E) 126.75 346.325 (W)	TOWER★ 124.05 259.1	GND CON 121.675 289.4
------------------------------	---	-------------------------------	---------------------------------



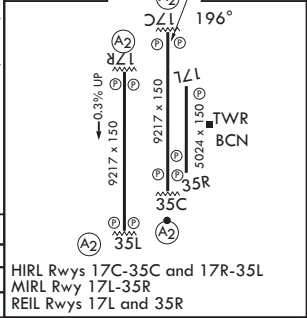
FOR USE BY 71 FTW AIRCRAFT ONLY

EMERG SAFE ALT 100 NM 4500



ELEV 1307 TDZE 1282

CATEGORY	A	B	C	D
RNAV MDA	1720-1½	438 (500-1½)	NA	NA
CIRCLING	1760-1½	453 (500-1½)	NA	NA



ENID, OKLAHOMA

36°20'N - 97°55'W

VANCE AFB (KEND)

Orig 24MAR22

RNAV (GPS) RWY 17L

SC-1, 16 APR 2026 to 14 MAY 2026

SC-1, 16 APR 2026 to 14 MAY 2026