

ENID, OKLAHOMA

RNAV (GPS) RWY 35R

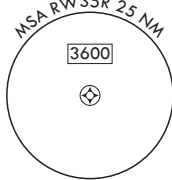
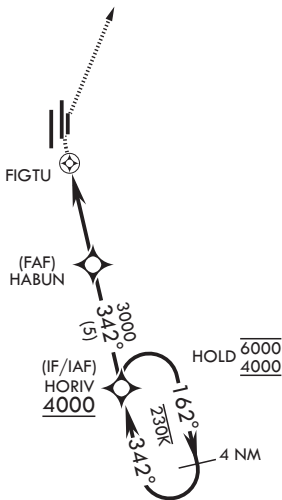
APCH CRS	Rwy Idg	5024
342°	TDZE	1284
	Arprt Elev	1307

(USAF)

VANCE AFB (KEND)

RNP APCH	MISSED APPROACH: Climb to 1900 then climbing right turn to 4000 direct KRMLN and hold.

ATIS★ 115.4 263.15	APP CON 125.45 388.2 (E) 126.75 346.325 (W)	TOWER★ 124.05 259.1	GND CON 121.675 289.4
-----------------------	---	------------------------	--------------------------



FOR USE BY 71 FTW AIRCRAFT ONLY

EMERG SAFE ALT 100 NM 4500

			ELEV 1307		TDZE 1284
CATEGORY	A	B	C	D	HIRL Rwy 17C-35C and 17R-35L MIRL Rwy 17L-35R REIL Rwy 17L and 35R
LNAV MDA	1720-1 ³ / ₈	436 (500-1 ³ / ₈)	NA	NA	
CIRCLING	1760-1 ³ / ₈	453 (500-1 ³ / ₈)	NA	NA	

ENID, OKLAHOMA

36°20'N - 97°55'W

VANCE AFB (KEND)

Orig 24MAR22

RNAV (GPS) RWY 35R

SC-1, 16 APR 2026 to 14 MAY 2026

SC-1, 16 APR 2026 to 14 MAY 2026