

# RNAV (GPS) Y RWY 17R

APCH CRS	Rwy Idg	<b>9217</b>
<b>163°</b>	TDZE	<b>1287</b>
	Arpt Elev	<b>1307</b>

[USAF]

VANCE AFB (KEND)

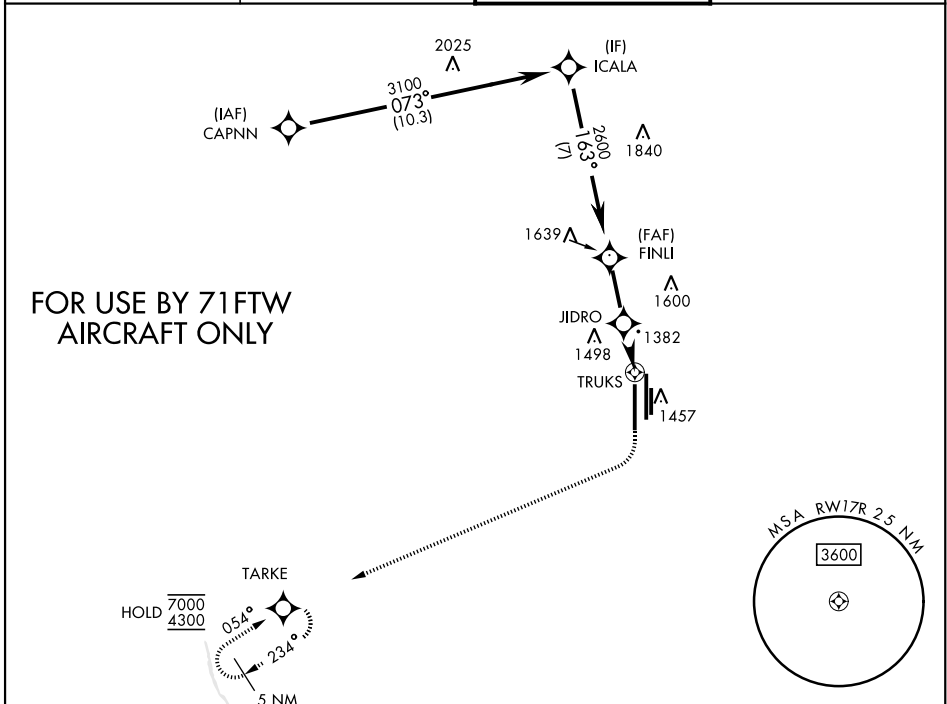
RNP APCH - GPS	SALS
RADAR required	<b>(A2)</b>
* When ALS inop, increase vis to 1 mile. Circling visibility reduction by helicopters not authorized.	

MISSED APPROACH: Climb to 1900, then climbing right turn to 4300 direct TARKE and hold.

ATIS ★	APP CON
<b>115.4 263.15</b>	<b>125.45 388.2 (E)</b> <b>126.75 346.325 (W)</b>

TOWER ★
<b>124.05 259.1</b>

GND CON
<b>121.675 289.4</b>

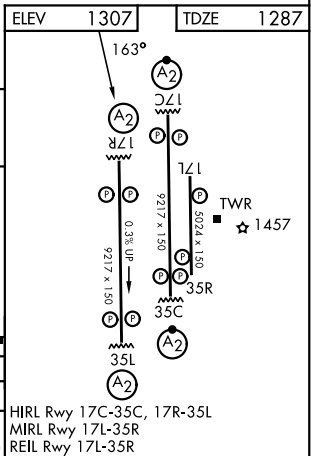
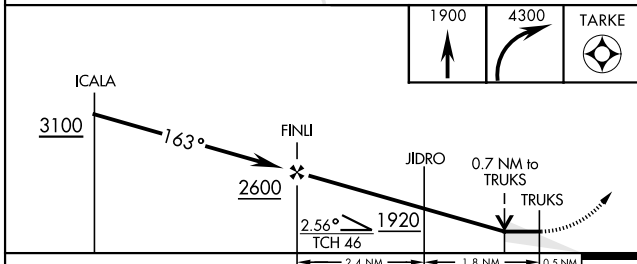


**FOR USE BY 71FTW AIRCRAFT ONLY**

SC-1, 16 APR 2026 to 14 MAY 2026

SC-1, 16 APR 2026 to 14 MAY 2026

ELEV	1307	TDZE	1287
------	------	------	------



CATEGORY	A	B	C	D	E
LNAV MDA*	1640- <sup>3</sup> / <sub>4</sub> 353 (400- <sup>3</sup> / <sub>4</sub> )				
CIRCLING	1760-1 453 (500-1)	1800-1½ 493 (500-1½)	1900-2 593 (600-2)	2400-3 1093 (1100-3)	

HIRL Rwy 17C-35C, 17R-35L  
 MRL Rwy 17L-35R  
 REIL Rwy 17L-35R

# RNAV (GPS) Y RWY 17R