

RNAV (GPS) Y RWY 35L

APCH CRS	Rwy ldg	9217
003°	THRE	1307
	Arpt Elev	1307

[USAF]

VANCE AFB (KEND)

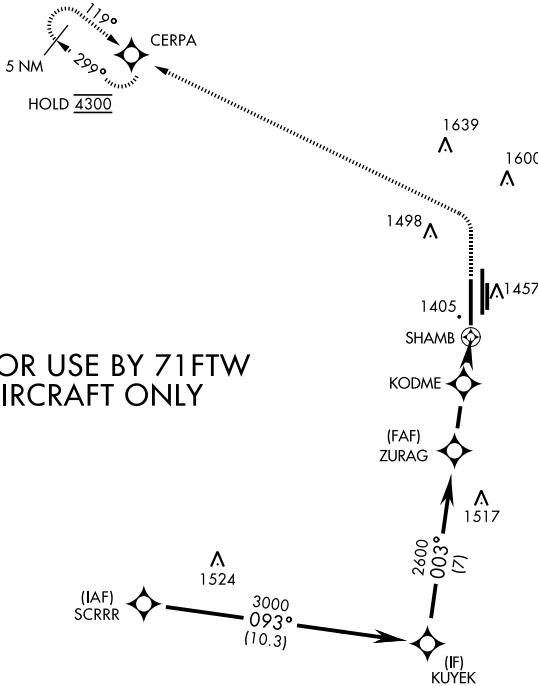
RNP APCH - GPS	SALS
RADAR required	(A2)
* When ALS inop, increase vis to 1 mile. Circling visibility reduction by helicopters not authorized.	

MISSED APPROACH: Climb to 1900, then climbing left turn to 4300 direct CERPA and hold.

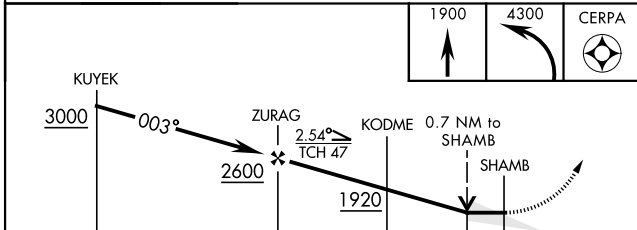
ATIS *	APP CON
115.4 263.15	125.45 388.2 (E) 126.75 346.325 (W)

TOWER *	GND CON
124.05 259.1	121.675 289.4

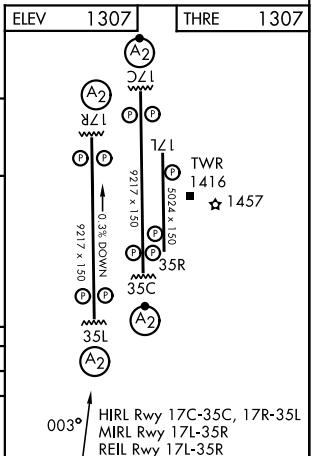
FOR USE BY 71FTW AIRCRAFT ONLY



EMERG SAFE ALT 100 NM 4500



CATEGORY	A	B	C	D	E
LNNAV MDA *	1660 - 3/4		353	(400 - 3/4)	
CIRCLING	1760-1	453 (500-1)	1800-1 1/2 493 (500-1 1/2)	1900-2 593 (600-2)	2400-3 1093 (1100-3)



RNAV (GPS) Y RWY 35L

SC-1, 16 APR 2026 to 14 MAY 2026

SC-1, 16 APR 2026 to 14 MAY 2026