

ENID, OKLAHOMA

VOR/DME RWY 35R

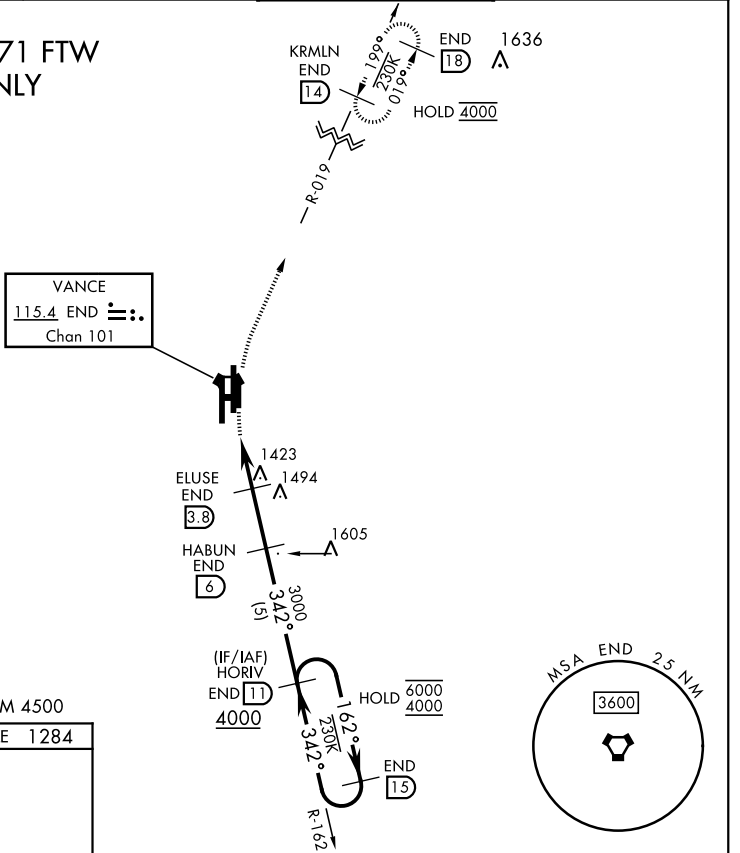
VORTAC END 115.4 Chan 101	APCH CRS 342°	Rwy Idg TDZE Arprt Elev 5024 1284 1307
-----------------------------------------------	-------------------------	----------------------------------------------------------------------------

[USAF]

VANCE AFB (KEND)

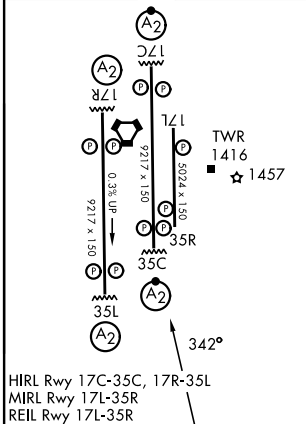
<p>Visibility reduction by helicopters NA.</p>		<p>MISSED APPROACH: Climbing right turn to 4000 on heading 005°, intercept END VORTAC R-019 to KRMLN and hold.</p>	
<p>ATIS ★ 115.4 263.15</p>	<p>APP CON 125.45 388.2 (E) 126.75 346.325 (W)</p>	<p>TOWER ★ 124.05 259.1</p>	<p>GND CON 121.675 289.4</p>

**FOR USE BY 71 FTW
ACFT ONLY**



EMERG SAFE ALT 100 NM 4500

ELEV 1307	TDZE 1284
-----------	-----------



4000	hdg 005°	END R-019	KRMLN END 14	VGSI and descent angles not coincident (VGSI Angle 3.00/TCH 50).		
END VORTAC	FIGTU END 1.9	ELUSE END 3.8	HABUN END 6	HORV END 11	END 15	
2280	3.02° TCH 40	3000	342°	162°	6000	4000
1.1	1.9 NM	2.2 NM				
CATEGORY	A	B	C	D		
S-35R	1720-1 ³ / ₈	436 (500-1 ³ / ₈)			NA	
CIRCLING	1760-1 ³ / ₈	453 (500-1 ³ / ₈)			NA	

ENID, OKLAHOMA
Orig 24MAR22

36°20'N-97°55'W

VANCE AFB (KEND)

VOR/DME RWY 35R

SC-1, 16 APR 2026 to 14 MAY 2026

SC-1, 16 APR 2026 to 14 MAY 2026