

WAAS CH 82308 W21A	APP CRS 207°	Rwy Ldg TDZE Apt Elev	5500 1276 1276
--	------------------------	-----------------------------	---

RNAV (GPS) RWY 21

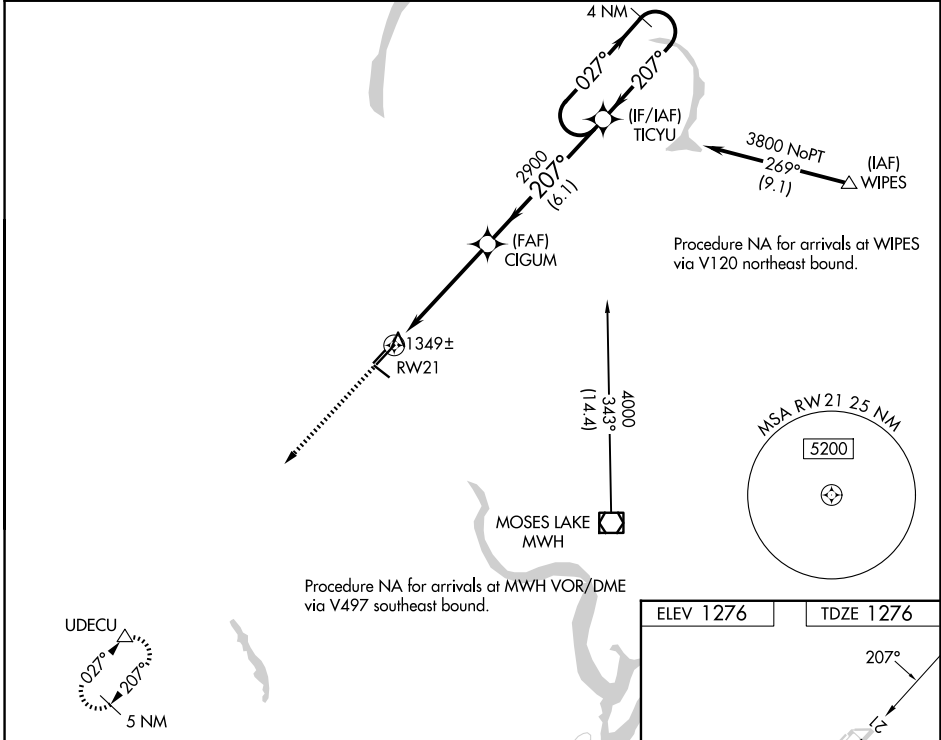
EPHRATA MUNI (EPH)

RNP APCH.

▼ For uncompensated Baro-VNAV systems, LNAV/VNAV NA below -17°C or above 46°C. VDP and Baro-VNAV NA when using Moses Lake/Grant County Intl altimeter setting. When local altimeter setting not received, use Moses Lake/Grant County Intl altimeter setting and increase all DA/MDA 40 feet; increase visibility LPV all Cats, and LNAV Cats C and D ¼ SM.

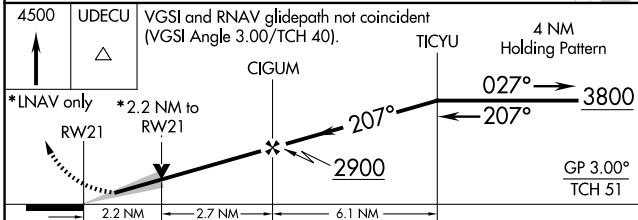
MISSED APPROACH: Climb to 4500 direct UDECU and hold.

ASOS 135.775	GRANT COUNTY APP CON * 126.4 379.95	UNICOM 122.8 (CTAF) 0
------------------------	---	---------------------------------

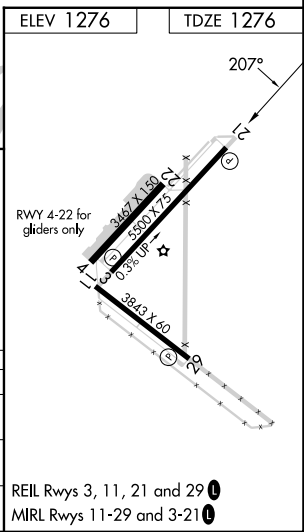


NW-1, 16 APR 2026 to 14 MAY 2026

NW-1, 16 APR 2026 to 14 MAY 2026



4500	UDECU	VGSI and RNAV glidepath not coincident (VGSI Angle 3.00/TCH 40).			
*LNAV only	*2.2 NM to RWY 21	CIGUM	TICYU	4 NM Holding Pattern	
				027°	3800
				207°	
				2900	
					GP 3.00°
					TCH 51
CATEGORY	A	B	C	D	
LPV DA		1526-¾	250 (300-¾)		
LNAV/VNAV DA		2171-4	895 (900-4)		
LNAV MDA	2020-1 744 (800-1)	2020-1¼ 744 (800-1¼)	2020-2¼ 744 (800-2¼)	2020-2½	744 (800-2½)



REIL Rwy 3, 11, 21 and 29 0
MIRL Rwy 11-29 and 3-21 0