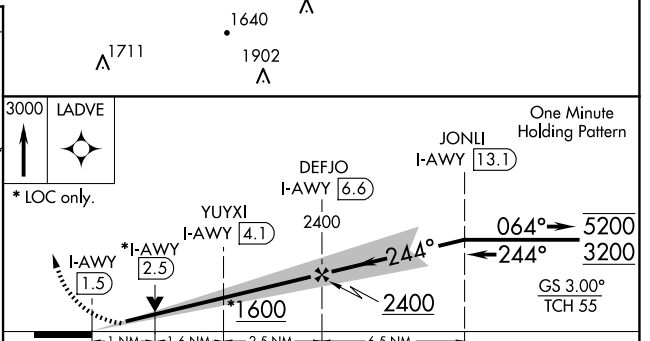
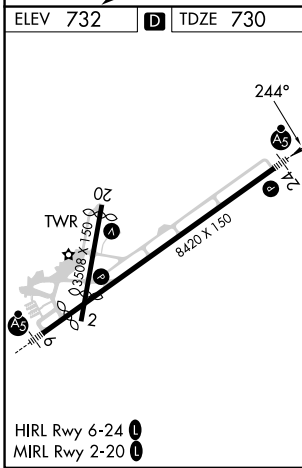
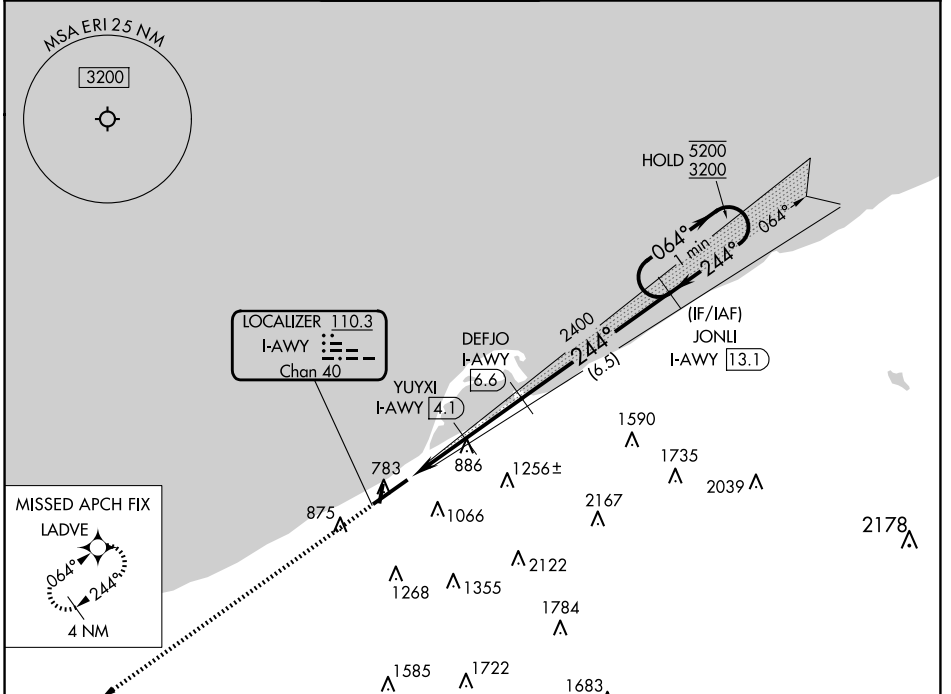


LOC/DME I-AWY 110.3 Chan 40	APP CRS 244°	Rwy Ldg TDZE 7500 730 Apt Elev 732
---	------------------------	--

ILS or LOC RWY 24

ERIE INTL/TOM RIDGE FLD (ERI)

RADAR required for procedure entry. RNAV 1-GPS and DME required.		MALSR 	MISSED APPROACH: Climb to 3000 direct LADVE and hold (GPS required).			
Circling Rwy 2, 20 NA at night. Circling NA southeast of Rwy 6-24.	ATIS 120.35	BUFFALO APP CON* 121.0 257.8	ERIE TOWER* 118.1 (CTAF) 257.8	GND CON 121.9	CLNC DEL 126.8	UNICOM 122.95



CATEGORY	A	B	C	D
S-ILS 24		942/24	212 (300-1/2)	
S-LOC 24	1120/24	390 (400-1/2)	1120/35	390 (400-3/4)
CIRCLING	1160-1 428 (500-1)	1200-1 468 (500-1)	1200-1 1/2 468 (500-1 1/2)	1340-2 608 (700-2)

NE-4, 16 APR 2026 to 14 MAY 2026

NE-4, 16 APR 2026 to 14 MAY 2026