

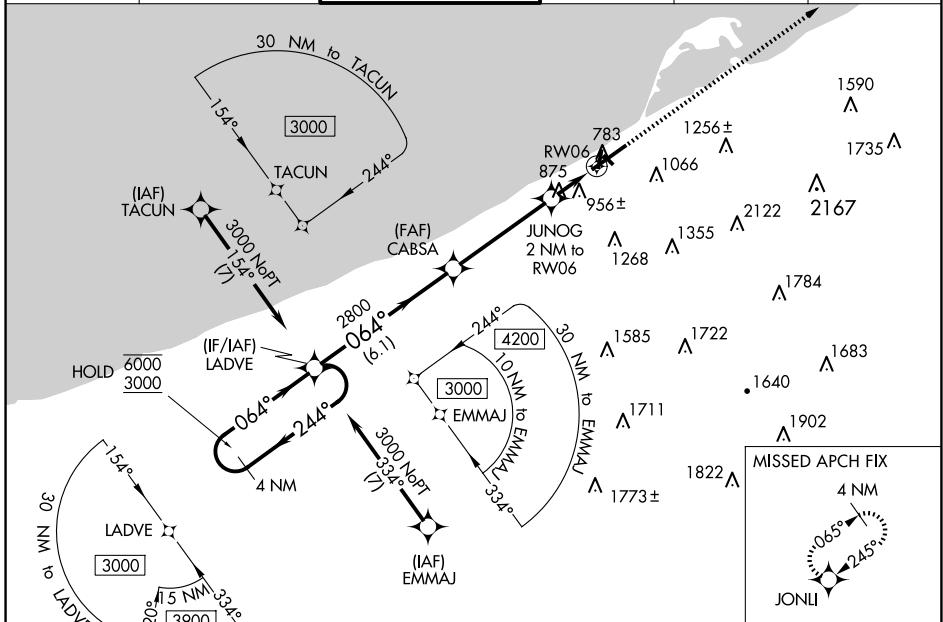
WAAS CH 77612 W06A	APP CRS 064°	Rwy Ldg TDZE 732 Apt Elev 732	7501
--	------------------------	---	-------------

RNAV (GPS) RWY 6

ERIE INTL/TOM RIDGE FLD (ERI)

RNP APCH - GPS.				MALSRL	MISSED APPROACH: Climb to 3200 direct JONLI and hold.
Circling NA southeast of Rwy 6-24. Circling Rwy 2, 20 NA at night. For uncompensated Baro-VNAV systems, LNAV/VNAV NA below -15°C or above 54°C. For inop ALS, increase LNAV Cots C and D visibility to 1% SM.					

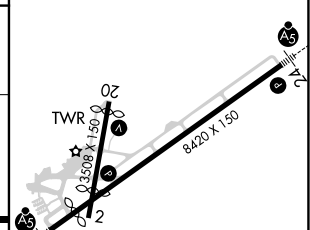
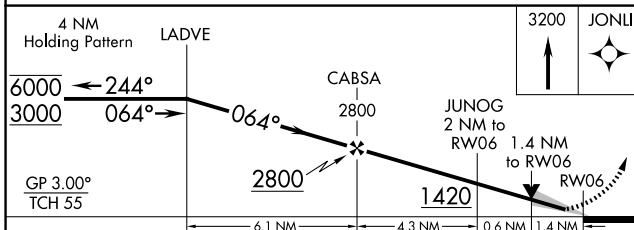
ATIS 120.35	BUFFALO APP CON * 121.0 257.8	ERIE TOWER * 118.1 (CTAF) 0 257.8	GND CON 121.9	CLNC DEL 126.8	UNICOM 122.95
-----------------------	---	---	-------------------------	--------------------------	-------------------------



NE-4, 16 APR 2026 to 14 MAY 2026

NE-4, 16 APR 2026 to 14 MAY 2026

ELEV 732	D TDZE 732
----------	-------------------



CATEGORY	A	B	C	D
LPV DA		982/24	250 (300-½)	
LNAV/VNAV DA		1256/55	524 (600-1)	
LNAV MDA	1220/24	488 (500-½)	1220/50	488 (500-1)
C CIRCLING	1220-1	488 (500-1)	1220-1½ 488 (500-1½)	1340-2 608 (700-2)

HIRL Rwy 6-24 1
MIRL Rwy 2-20 1