

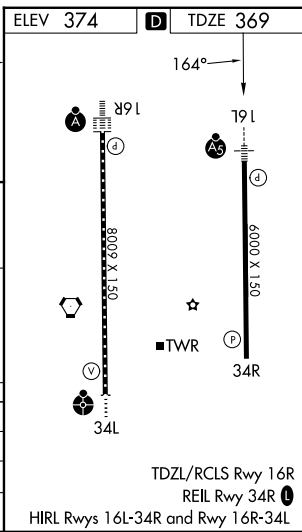
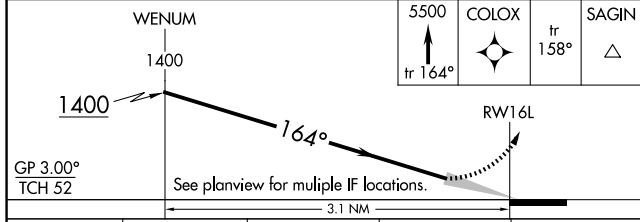
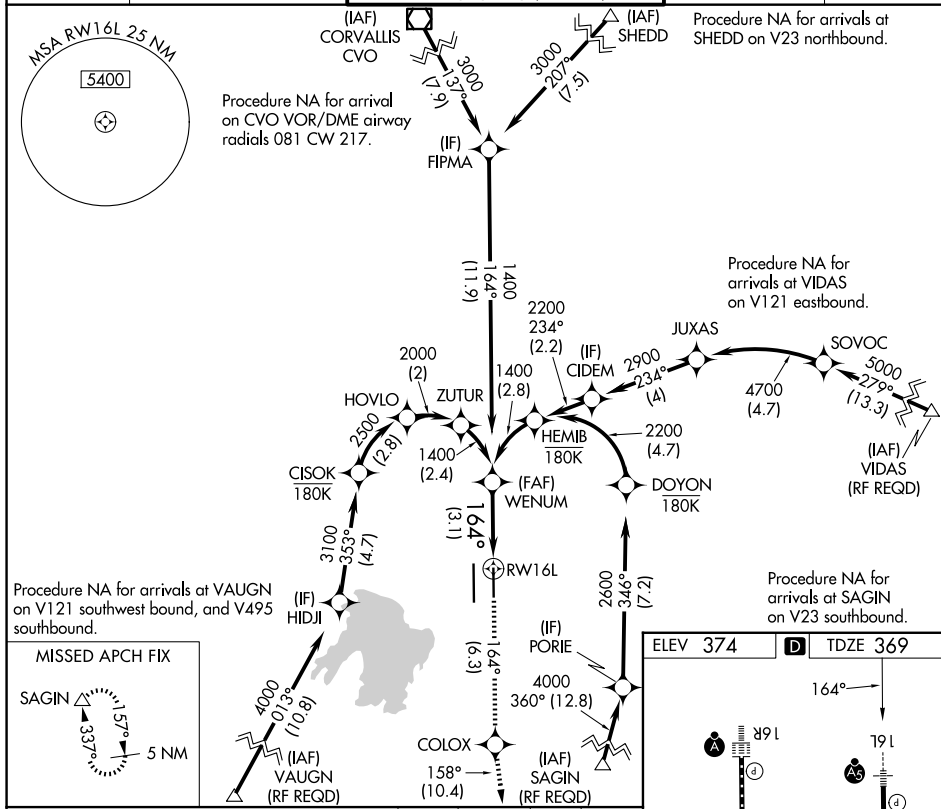
APP CRS	Rwy Ldg	6000
164°	TDZE	369
	Apt Elev	374

RNAV (RNP) Z RWY 16L

MAHLON SWEET FLD (EUG)

RNP AR APCH.	MALSR	MISSED APPROACH: Climb to 5500 on track 164° to COLOX and on track 158° to SAGIN and hold, continue climb-in-hold to 5500.
▼ For uncompensated Baro-VNAV systems, procedure NA below -9°C or above 54°C. Simultaneous approach authorized. For inop ALS, increase RNP 0.30 all Cats visibility to 1 SM.		

ATIS 125.225	CASCADE APP CON * 119.6 348.7	EUGENE TOWER * 118.9 (CTAF) 371.9 (16R/34L) 124.15 371.9 (16L/34R)	GND CON 121.7 269.5	UNICOM 122.95
------------------------	---	--	-------------------------------	-------------------------



CATEGORY	A	B	C	D
RNP 0.10 DA		699-½	330 (400-½)	
RNP 0.30 DA		749-⅝	380 (400-⅝)	

AUTHORIZATION REQUIRED

NW-1, 16 APR 2026 to 14 MAY 2026

NW-1, 16 APR 2026 to 14 MAY 2026