

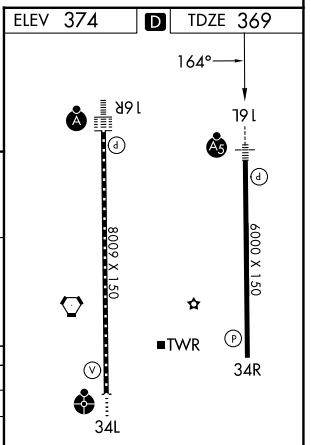
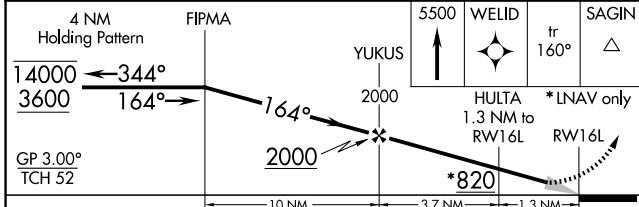
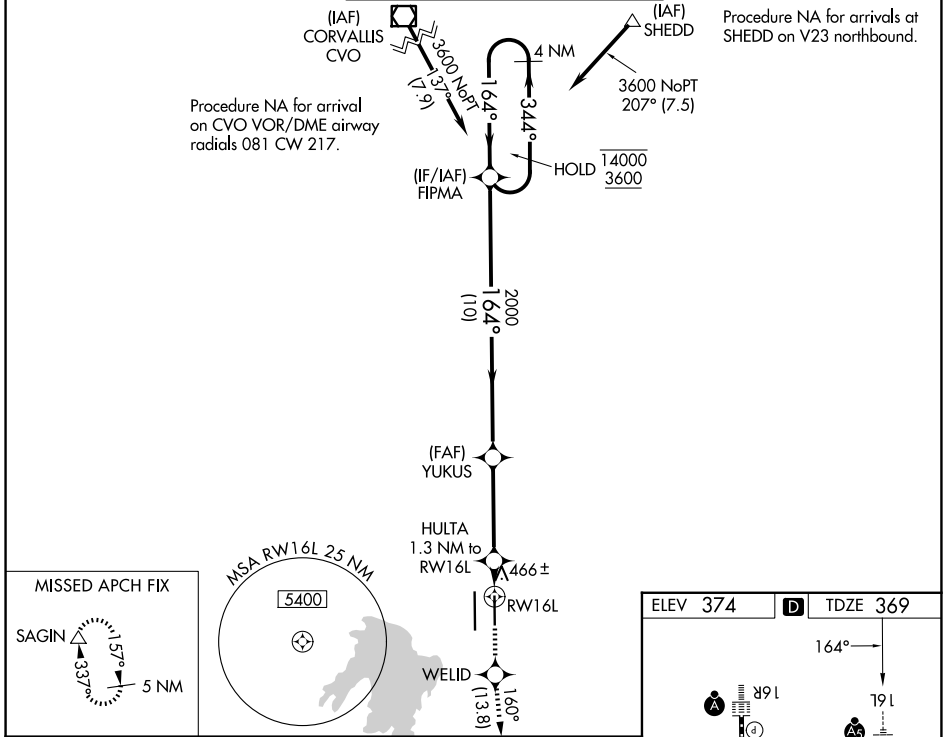
WAAS CH 81827 W16A	APP CRS 164°	Rwy Ldg TDZE Apt Elev	6000 369 374
--	------------------------	-----------------------------	---

RNAV (GPS) Y RWY 16L

MAHLON SWEET FLD (EUG)

RNP APCH.	MALSRL 	MISSED APPROACH: Climb to 5500 direct WELID and on track 160° to SAGIN and hold, continue climb-in-hold to 5500.
<p>⚠ Simultaneous approach authorized. LNAV procedure NA during simultaneous operations. Use of FD or AP providing RNAV track guidance required during simultaneous operations. For uncompensated Baro-VNAV systems, LNAV/VNAV NA below -10°C or above 54°C. For Inop ALS, increase LNAV/VNAV all Cats visibility to ½ SM, increase LNAV Cat C/D visibility to 1 SM.</p>		

ATIS 125.225	CASCADE APP CON* 119.6 348.7	EUGENE TOWER* 118.9 (CTAF) 371.9 (16R/34L) 124.15 371.9 (16L/34R)	GND CON 121.7 269.5	UNICOM 122.95
------------------------	--	---	-------------------------------	-------------------------



CATEGORY	A	B	C	D
LPV DA		569-½	200 (200-½)	
LNAV/VNAV DA		632-½	263 (300-½)	
LNAV MDA	720-½	351 (400-½)	720-⅝	351 (400-⅝)
CIRCLING	820-1 446 (500-1)	840-1 466 (500-1)	1000-1¾ 626 (700-1¾)	1140-2½ 766 (800-2½)

TDZL/RCLS Rwy 16R
REIL Rwy 34R

HIRL Rwy 16L-34R and Rwy 16R-34L

NW-1, 16 APR 2026 to 14 MAY 2026

NW-1, 16 APR 2026 to 14 MAY 2026