

WAAS CH 81900 W34B	APP CRS 344°	Rwy Ldg TDZE Apt Elev	6000 374 374
--	------------------------	-----------------------------	---

RNAV (GPS) Y RWY 34R

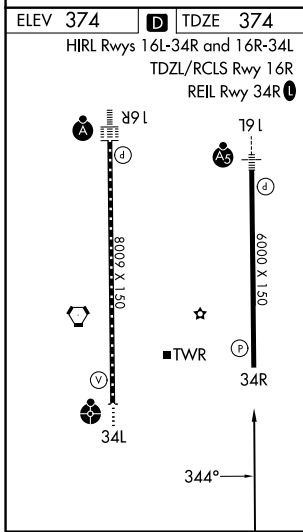
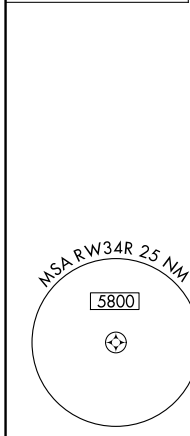
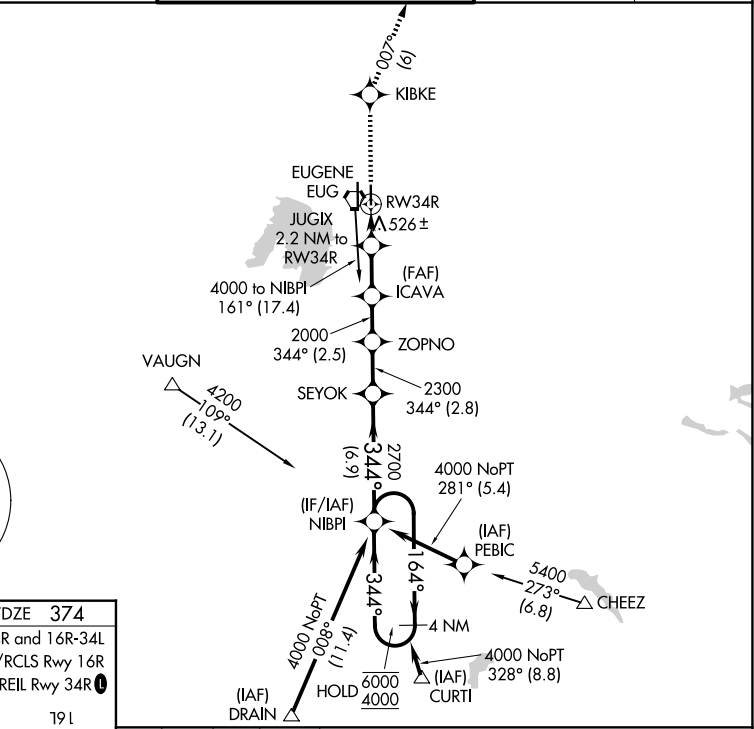
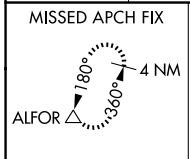
MAHLON SWEET FLD (EUG)

RNP APCH.

Simultaneous approach authorized. LNAV procedure NA during simultaneous operations.
Use of FD or AP providing RNAV track guidance required during simultaneous operations.
Rwy 34R helicopter visibility reduction below 3/4 SM NA. For uncompensated Baro-VNAV systems, LNAV/VNAV NA below -10°C or above 54°C.

MISSED APPROACH: Climb to 3000 direct KIBKE then on track 007° to ALFOR and hold.

ATIS 125.225	CASCADE APP CON ★ 119.6 348.7	EUGENE TOWER ★ 118.9 (CTAF) 371.9 (16R/34L) 124.15 371.9 (16L/34R)	GND CON 121.7 269.5	UNICOM 122.95
------------------------	---	--	-------------------------------	-------------------------



3000	KIBKE	tr	ALFOR	NIBPI	4 NM	Holding Pattern
007°	△				164°	6000
					344°	4000
*LNAV only	JUGIX	ICAVA	ZOPNO	SEYOK		
	2.2 NM to RW34R	2000	2300	2700		
	1.1 NM to RW34R	1120	2000			GP 3.00°
						TCH 50
	1.1 NM	1.1 NM	2.8 NM	2.5 NM	2.8 NM	6.9 NM
CATEGORY	A		B		C	
LPV DA			636-7/8		262 (300-7/8)	
LNAV/VNAV DA			661-7/8		287 (300-7/8)	
LNAV MDA	780-1		406 (500-1)		780-1 1/8 406 (500-1 1/8)	
CIRCLING	820-1 446 (500-1)		840-1 466 (500-1)		1000-1 3/4 626 (700-1 3/4) 1140-2 1/2 766 (800-2 1/2)	

NW-1, 16 APR 2026 to 14 MAY 2026

NW-1, 16 APR 2026 to 14 MAY 2026