

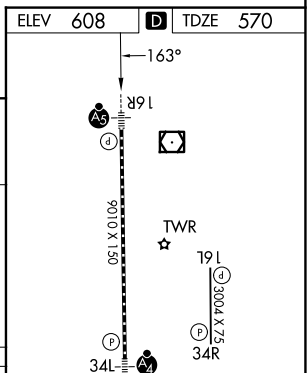
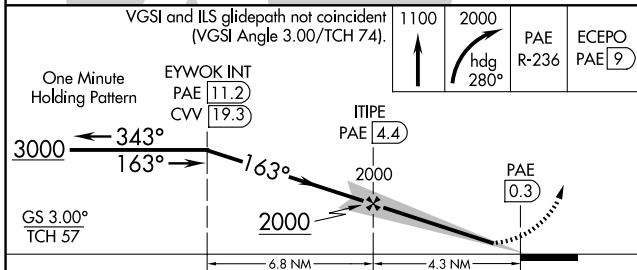
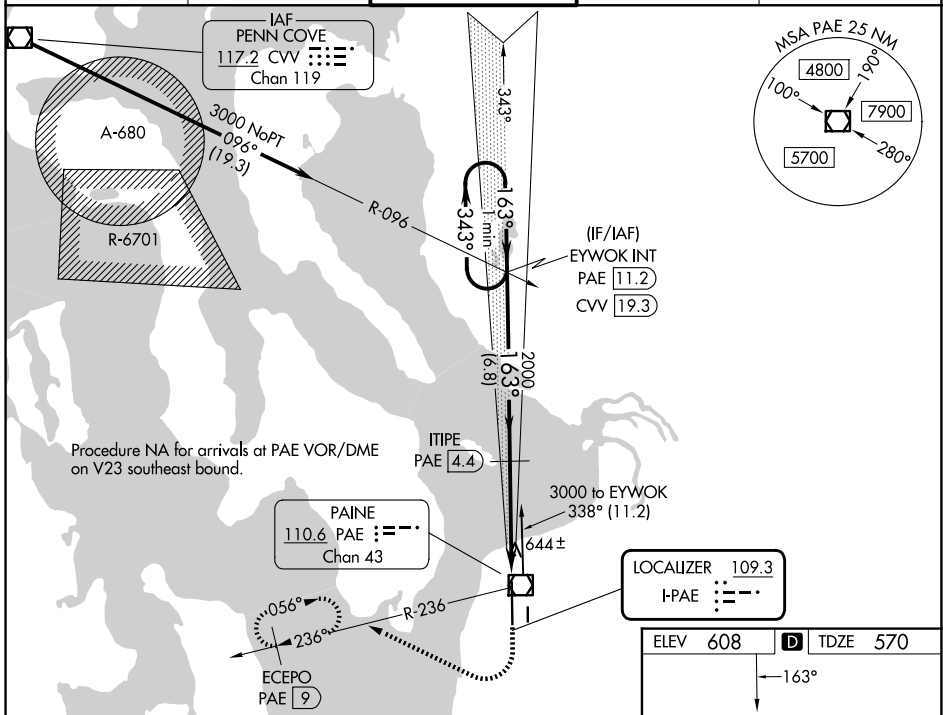
LOC I-PAE 109.3	APP CRS 163°	Rwy Ldg TDZE Apt Elev	9010 570 608
---------------------------	------------------------	-----------------------------	-----------------------------------------

ILS Y or LOC Y RWY 16R

SEATTLE PAINE FLD INTL (P.A.E.)

<p>⚠ Circling Rwy 34R NA at night. DME required. DME from PAE VOR/DME. Simultaneous reception of I-PAE and PAE DME required.</p>	<p>MALSR</p>	<p>MISSED APPROACH: Climb to 1100 then climbing right turn to 2000 on heading 280° and PAE VOR/DME R-236 to ECEPO/PAE 9 DME and hold.</p>

ATIS 128.65	SEATTLE APP CON 128.5 306.9	PAINE TOWER* 132.95 (CTAF) 0 256.7	GND CON 121.8 339.8	UNICOM 122.95
-----------------------	---------------------------------------	----------------------------------------------	-------------------------------	-------------------------



CATEGORY	A	B	C	D
S-ILS 16R	770/18	200 (200-½)		NA
S-LOC 16R	940/24	370 (400-½)		NA
CIRCLING	1100-1	492 (500-1)		NA

TDZL/RCLS Rwy 16R
HIRL Rwy 16R-34L
REIL Rws 16L and 34R
MIRL Rwy 16L-34R

NW-1, 16 APR 2026 to 14 MAY 2026

NW-1, 16 APR 2026 to 14 MAY 2026