

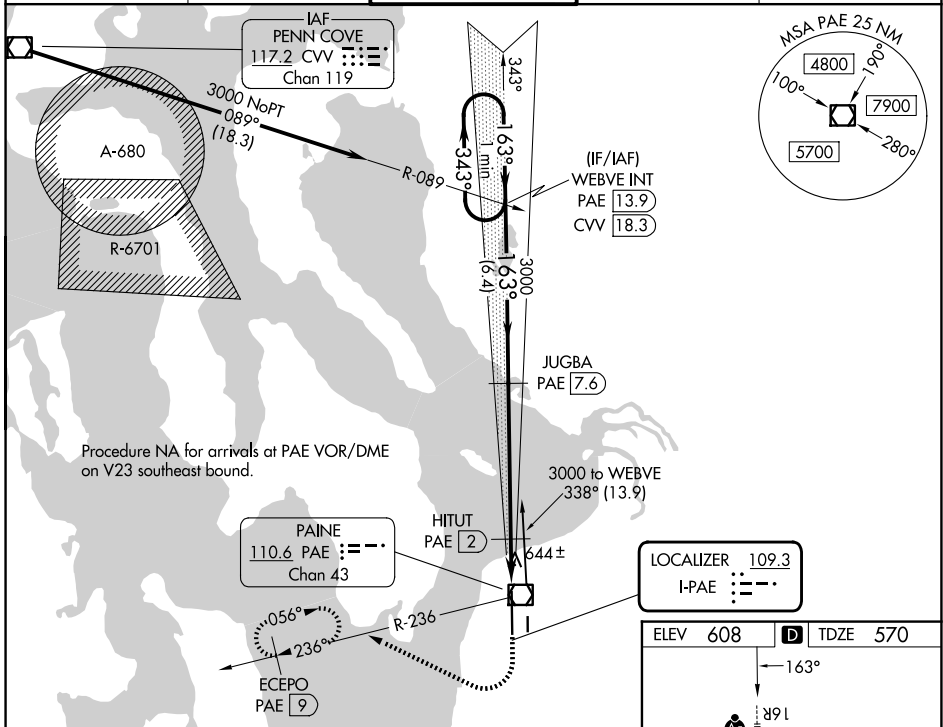
LOC I-PAE 109.3	APP CRS 163°	Rwy Ldg TDZE Apt Elev	9010 570 608
---------------------------	------------------------	-----------------------------	---

ILS Z or LOC Z RWY 16R

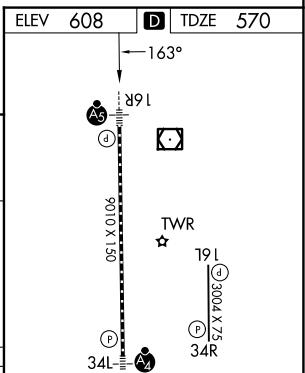
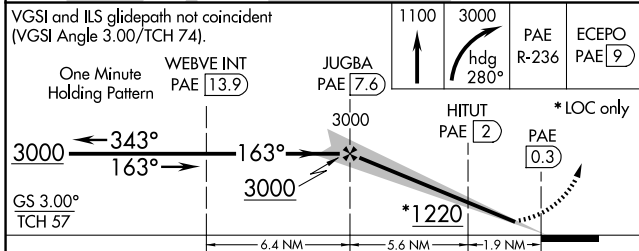
SEATTLE PAINE FLD INTL (P.A.E.)

<p>▼ Circling Rwy 34R NA at night. DME required. For inop ALS, increase S-LOC 16R Cats C/D visibility to RVR 5500.</p> <p>▲ DME from PAE VOR/DME. Simultaneous reception of I-PAE and PAE DME required.</p>	<p>MALSR</p>	<p>MISSED APPROACH: Climb to 1100 then climbing right turn to 3000 on heading 280° and PAE VOR/DME R-236 to ECEPO/PAE 9 DME and hold, continue climb-in-hold to 3000.</p>
---	--------------	---

ATIS 128.65	SEATTLE APP CON 128.5 306.9	PAINE TOWER* 132.95 (CTAF) 256.7	GND CON 121.8 339.8	UNICOM 122.95
-----------------------	---------------------------------------	--	-------------------------------	-------------------------



Procedure NA for arrivals at PAE VOR/DME on V23 southeast bound.



CATEGORY	A	B	C	D
S-ILS 16R	770/18 200 (200-½)			
S-LOC 16R	940/24 370 (400-½)		940/35 370 (400-¾)	
CIRCLING	1100-1 492 (500-1)		1120-1½ 512 (600-1½)	
			1160-2 552 (600-2)	

TDZL/RCLS Rwy 16R

HIRL Rwy 16R-34L

REIL Rws 16L and 34R

MIRL Rwy 16L-34R

NW-1, 16 APR 2026 to 14 MAY 2026

NW-1, 16 APR 2026 to 14 MAY 2026