

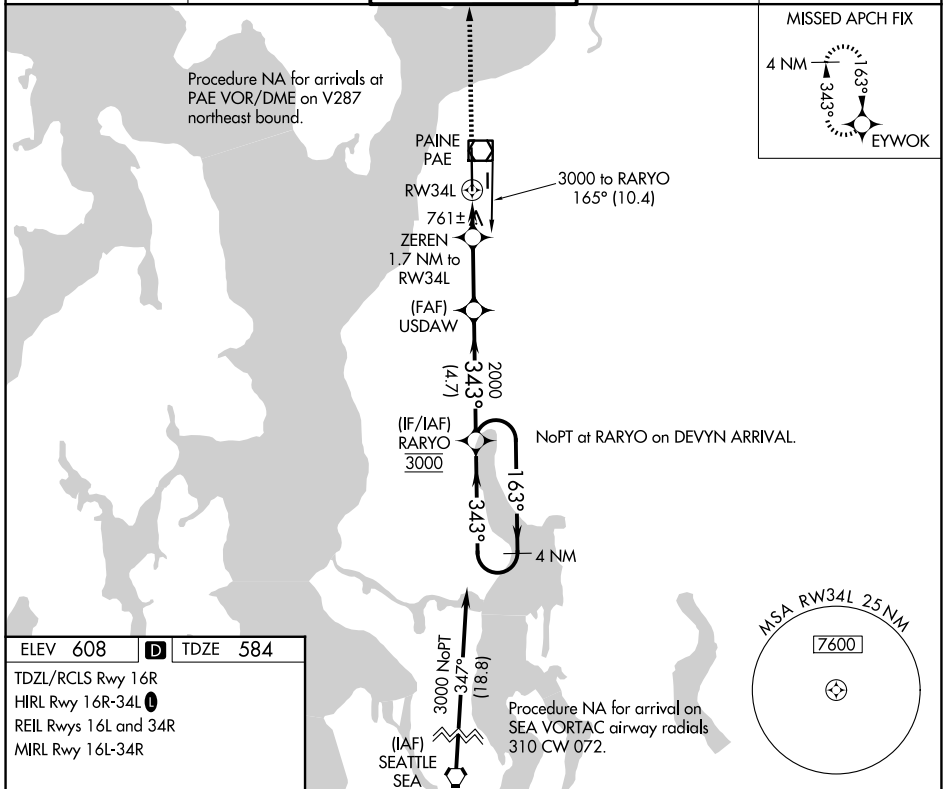
APP CRS 343°	Rwy Ldg TDZE Apt Elev	9010 584 608
------------------------	-----------------------------	---

RNAV (GPS) RWY 34L

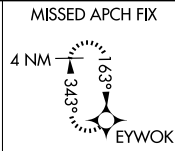
SEATTLE PAINE FLD INTL (P.A.E.)

<p>▼ Circling Rwy 34R NA at night. Rwy 34L helicopter visibility reduction below ¾ SM NA. DME/DME RNP-0.3 NA.</p>	<p>MALSF</p>	<p>MISSED APPROACH: Climb to 3000 direct EYWOK and hold.</p>

ATIS 128.65	SEATTLE APP CON 128.5 306.9	PAINE TOWER* 132.95 (CTAF) 256.7	GND CON 121.8 339.8	UNICOM 122.95
-----------------------	---------------------------------------	--	-------------------------------	-------------------------



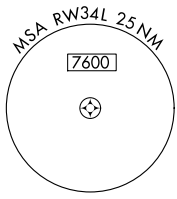
Procedure NA for arrivals at PAE VOR/DME on V287 northeast bound.



3000 to RARYO
1.63° (10.4)

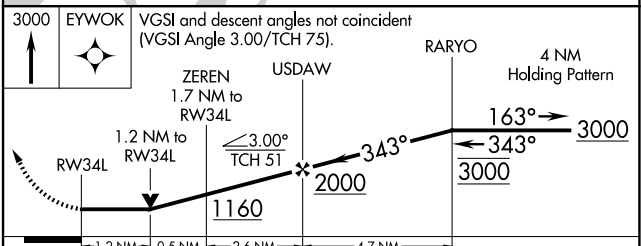
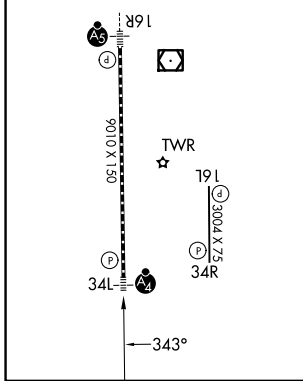
NoPT at RARYO on DEVYIN ARRIVAL.

Procedure NA for arrival on SEA VORTAC airway radials 310 CW 072.



ELEV 608	D	TDZE 584
----------	----------	----------

TDZL/RCLS Rwy 16R
HIRL Rwy 16R-34L
REIL Rws 16L and 34R
MIRL Rwy 16L-34R



CATEGORY	A	B	C	D
LNAV MDA	1020-¾ 436 (500-¾)		1020-1 436 (500-1)	
CIRCLING	1100-1 492 (500-1)		1120-1½ 512 (600-1½)	1160-2 552 (600-2)

NW-1, 16 APR 2026 to 14 MAY 2026

NW-1, 16 APR 2026 to 14 MAY 2026