


WAAS CH 60911 W16B	APP CRS 163°	Rwy Ldg TDZE Apt Elev	9010 570 608
--	------------------------	-----------------------------	---

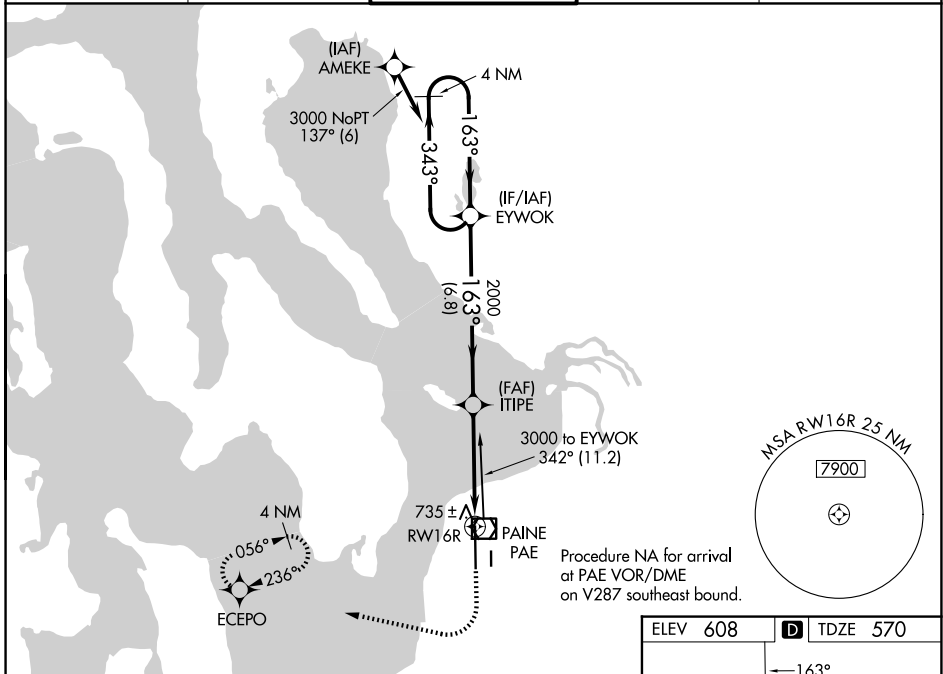
RNAV (GPS) Y RWY 16R

SEATTLE PAINE FLD INTL (P.A.E.)

▽ For uncompensated Baro-VNAV systems, LNAV/VNAV NA below -5°C (23°F) or above 54°C (130°F). Circling Rwy 34R NA at night. DME/DME RNP-0.3 NA. For inop ALS, increase LNAV/VNAV Cats A/B visibility to RVR 5000.

MALSR

MISSED APPROACH: Climb to 1100 then climbing right turn to 2000 direct ECEPO and hold.

ATIS 128.65	SEATTLE APP CON 128.5 306.9	PAINE TOWER* 132.95 (CTAF) 0 256.7	GND CON 121.8 339.8	UNICOM 122.95
-----------------------	---------------------------------------	--	-------------------------------	-------------------------



NW-1, 16 APR 2026 to 14 MAY 2026

NW-1, 16 APR 2026 to 14 MAY 2026

