


WAAS CH <b>61129</b> <b>W16A</b>	APP CRS <b>163°</b>	Rwy Ldg TDZE Apt Elev	<b>9010</b> <b>570</b> <b>608</b>
--	------------------------	-----------------------------	---

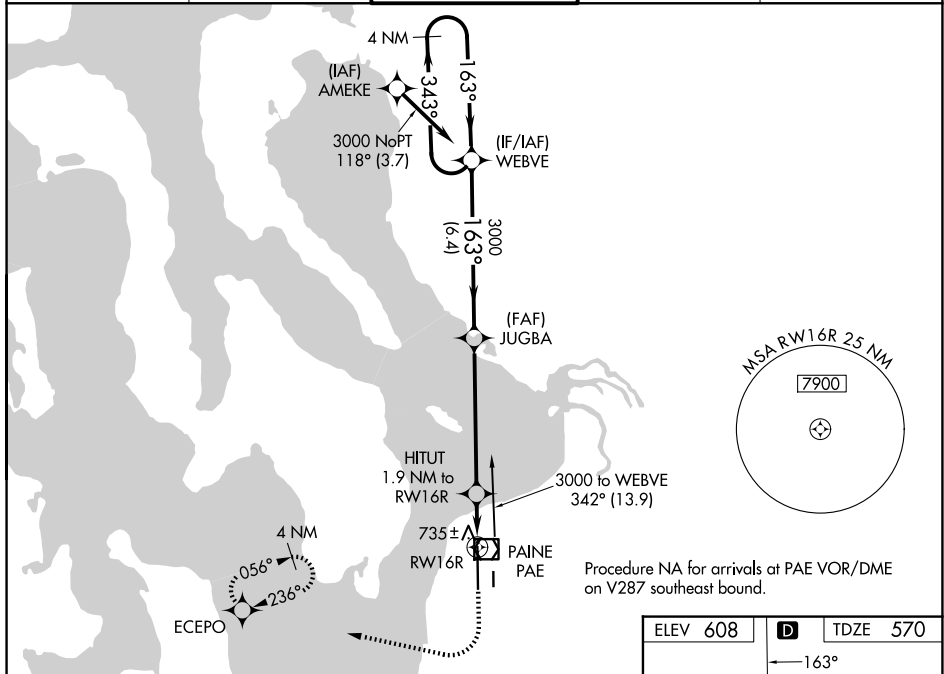
# RNAV (GPS) Z RWY 16R

SEATTLE PAINE FLD INTL (P.A.E.)

**▽** For uncompensated Baro-VNAV systems, LNAV/VNAV NA below -5°C (23°F) or above 54°C (130°F). Circling Rwy 34R NA at night. DME/DME RNP-0.3 NA.

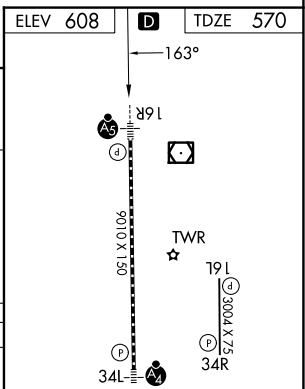
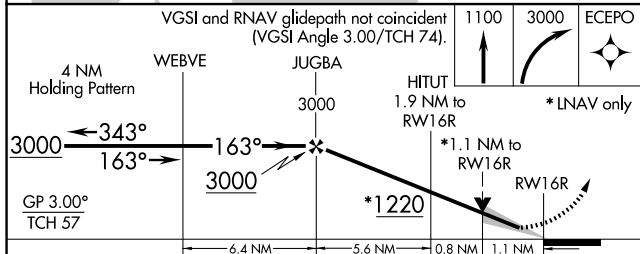
**MALSR**  
 MISSED APPROACH: (Do not exceed 240K until ECEPO) Climb to 1100 then climbing right turn to 3000 direct ECEPO and hold, continue climb-in-hold to 3000.

ATIS <b>128.65</b>	SEATTLE APP CON <b>128.5 306.9</b>	PAINE TOWER* <b>132.95 (CTAF) 256.7</b>	GND CON <b>121.8 339.8</b>	UNICOM <b>122.95</b>
-----------------------	---------------------------------------	--	-------------------------------	-------------------------



NW-1, 16 APR 2026 to 14 MAY 2026

NW-1, 16 APR 2026 to 14 MAY 2026



CATEGORY	A	B	C	D
LPV DA		770/18	200 (200-½)	
LNAV/VNAV DA		913/30	343 (400-⅝)	
LNAV MDA	1000/24	430 (400-½)	1000/40	430 (400-¾)
CIRCLING	1100-1	492 (500-1)	1120-1½ 512 (600-1½)	1160-2 552 (600-2)

TDZL/RCLS Rwy 16R  
HIRL Rwy 16R-34L  
REIL Rws 16L and 34R  
MIRL Rwy 16L-34R