

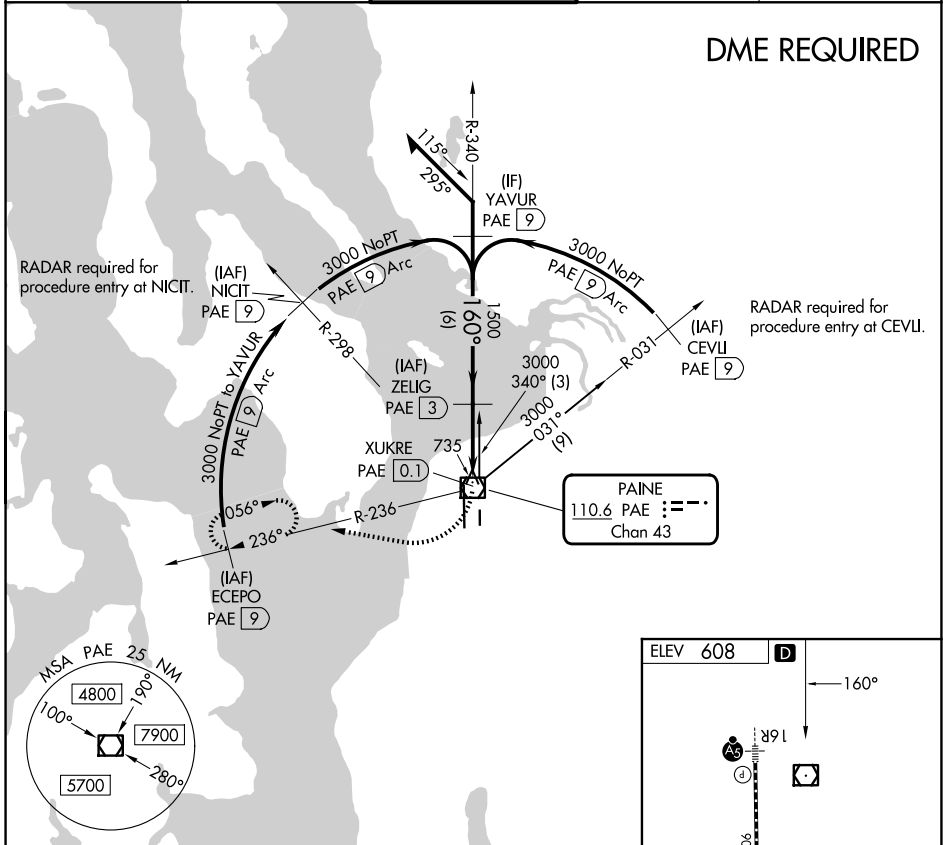
VOR/DME PAE 110.6 Chan 43	APP CRS 160°	Rwy Ldg TDZE Apt Elev N/A 608
---	------------------------	--

VOR-A
SEATTLE PAINE FLD INTL (P.A.E)

<p>◀ Circling Rwy 34R NA at night. DME required.</p>	<p>MISSED APPROACH: Climbing right turn to 2000 on heading 260° and PAE VOR/DME R-236 to ECEPO/PAE 9 DME and hold.</p>
--	--

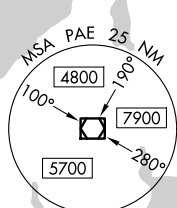
ATIS 128.65	SEATTLE APP CON 128.5 306.9	PAINE TOWER* 132.95 (CTAF) 0 256.7	GND CON 121.8 339.8	UNICOM 122.95
-----------------------	---------------------------------------	--	-------------------------------	-------------------------

DME REQUIRED

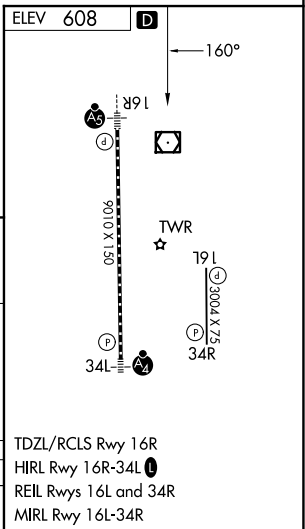


NW-1, 16 APR 2026 to 14 MAY 2026

NW-1, 16 APR 2026 to 14 MAY 2026



Remain within 10 NM	ZELIG PAE 3	2000	PAE R-236	ECEPO PAE 9
		340°	hdg 260°	
		160°		
		1500	XUKRE PAE 0.1	
			2.9 NM	



CATEGORY	A	B	C	D
CIRCLING	1100-1	492 (500-1)	1120-1½ 512 (600-1½)	1160-2 552 (600-2)

TDZL/RCLS Rwy 16R
HIRL Rwy 16R-34L
REIL Rws 16L and 34R
MIRL Rwy 16L-34R