


RNAV (GPS) RWY 18

HECTOR INTL (FAR)

WAAS CH 40006 W18A	APP CRS 176°	Rwy Ldg TDZE Apt Elev	9001 900 901
--	------------------------	-----------------------------	---

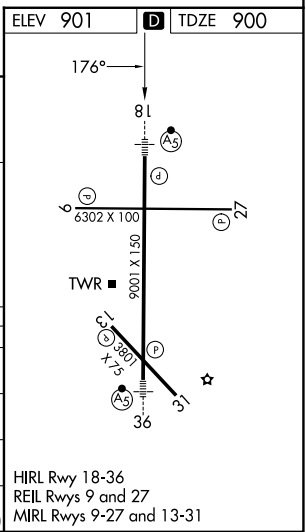
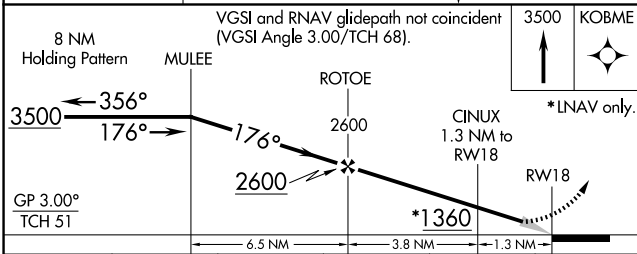
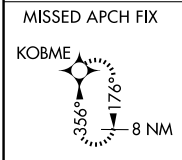
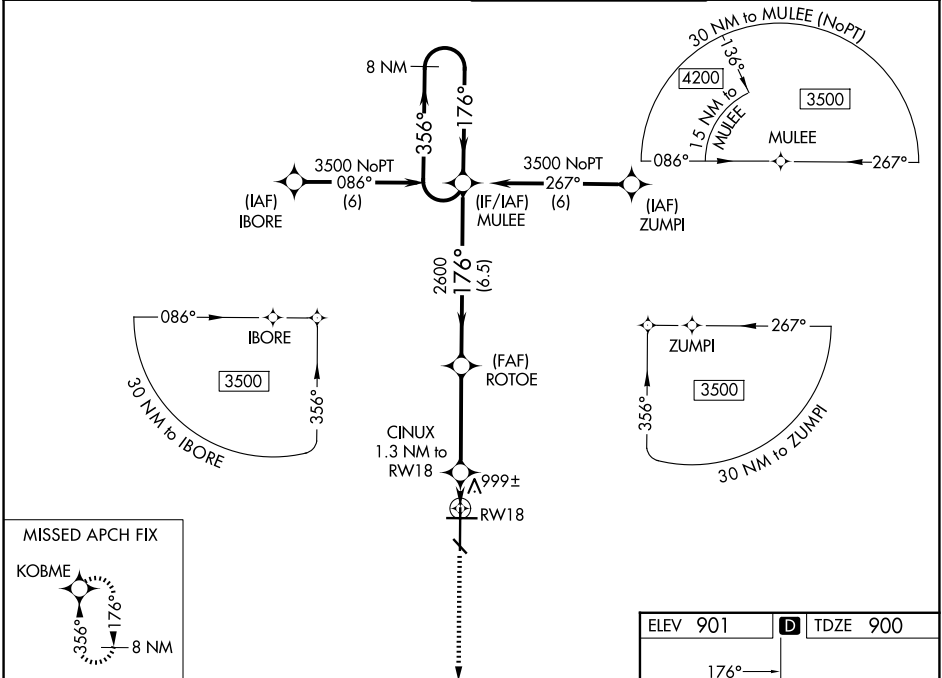
RNP APCH.

⚠ For inoperative MALS, increase LPV Cat E visibility to RVR 4000 and LNAV/VNAV Cat E and LNAV Cat D and E to RVR 6000. For uncompensated Baro-VNAV systems, LNAV/VNAV NA below -16°C (4°F) or above 47°C (116°F). #RVR 1800 authorized with use of FD or AP or HUD to DA.

MALS 

MISSED APPROACH: Climb to 3500 direct KOBME and hold.

ATIS 124.5 379.2	FARGO APP CON 120.4 377.15	FARGO TOWER 133.8 290.4	GND CON 121.9 348.6
----------------------------	--------------------------------------	-----------------------------------	-------------------------------



CATEGORY	A	B	C	D	E
LPV DA#		1100/24	200 (200-½)		
LNAV/VNAV DA		1272/40	372 (400-¾)		
LNAV MDA	1260/24	360 (400-½)		1260/50	360 (400-1)
CIRCLING	1380-1	479 (500-1)	1520-1¾ 619 (700-1¾)	1620-2¼ 719 (800-2¼)	1620-2½ 719 (700-2½)

NC-1, 16 APR 2026 to 14 MAY 2026

NC-1, 16 APR 2026 to 14 MAY 2026