

ILS or LOC RWY 23

LOC I-POB 110.9	APCH CRS 228°	Rwy Idg TDZE Arprt Elev 7501 200 225	[USAF]	POPE AAF (KPOB)
---------------------------	-------------------------	--	--------	-----------------

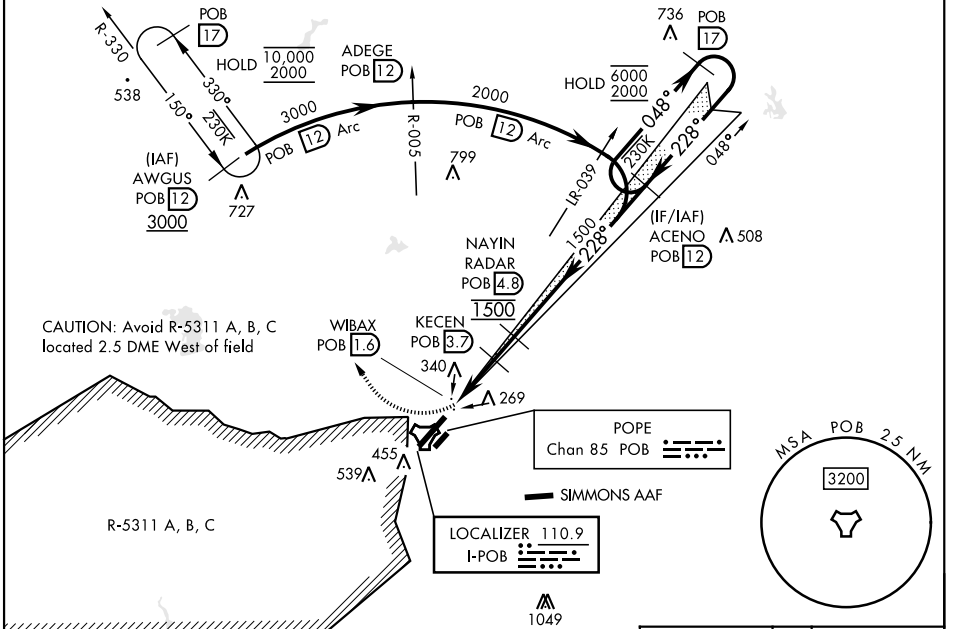
RADAR required

ALS-1

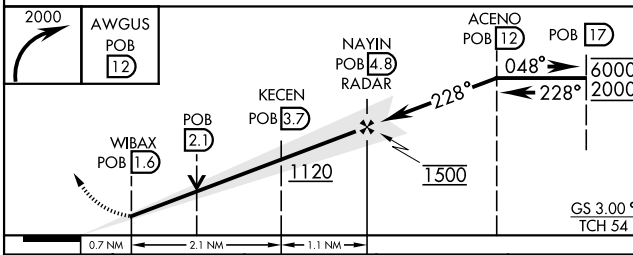
MISSED APPROACH: Climbing right turn to 2000 direct AWGUS and hold. For acct not equipped with TACAN or suitable RNAV system with GPS: Climbing right turn to 2000 hdg 350°, expect RADAR vectors.

* When ALS inop, increase RVR to 40 and vis to ¾ mile.
 ** When ALS inop, increase CAT AB RVR to 55 and vis to 1 mile; CAT CD RVR to 60, vis to 1½ miles.
 *** Circling not authorized SE of Rwy 5-23.
 **** When ALS inop, increase CAT AB RVR to 55 and vis to 1 mile; CAT CD vis to 1½ miles.

FAYETTEVILLE APP CON		TOWER		GND CON		CLNC DEL	
ATIS	125.175 285.575	(271° - 090°)	135.025 291.1	124.55 275.8	124.55 275.8		
132.3 353.725	133.0 290.25	(091° - 270°)					



EMERG SAFE ALT 100 NM 5300



CATEGORY	A	B	C	D
S-ILS 23 *	400/24		200	(200-½)
S-LOC 23 **	620/24	420 (500-½)	620/40	420 (500-¾)
CIRCLING ***	760-1	542 (600-1)	920-2 702 (800-2)	1060-2¾ 842 (900-2¾)
WITHOUT LAST STEPDOWN FIX				
S-LOC 23 ****	640/24	440 (500-½)	640/45	440 (500-¾)

ELEV	225	TDZE	200
------	-----	------	-----

HIRL Rwy 05-23
LIRL Rwy 05R-23L
REIL Rwy 05

FAF to MAP 3.2 NM

Knots	60	90	120	150	180
Min:Sec	3:12	2:08	1:36	1:17	1:04

ILS or LOC RWY 23

SE-2, 16 APR 2026 to 14 MAY 2026

SE-2, 16 APR 2026 to 14 MAY 2026