

FORT BRAGG, NORTH CAROLINA

# RNAV (GPS) RWY 23

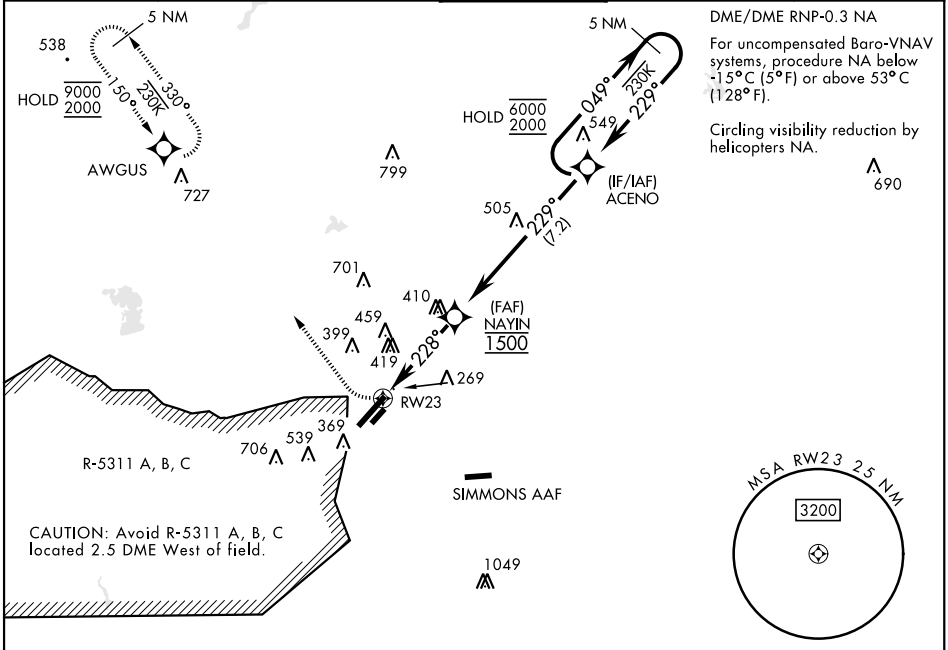
WAAS Chan <b>52202</b> <b>W23A</b>	APCH CRS <b>228°</b>	Rwy Idg TDZE Arprt Elev <b>7501</b> <b>200</b> <b>225</b>
--	-------------------------	--

[USAF]

POPE AAF (KPOB)

RADAR required		ALSF-1 	MISSED APPROACH: Climbing right turn to 2000 direct AWGUS and hold.
<p>* When ALS inop, increase RVR to 40 vis to 3/4 mile.  ** When ALS inop, increase vis to 1 1/4 mile.  *** When ALS inop, increase CAT AB RVR to 55 and vis to 1 mile;  CAT CD vis to 1 1/8 miles.  **** Circling not authorized SE of Rwy 5-23.</p>			

ATIS <b>132.3 353.725</b>	FAYETTEVILLE APP CON <b>125.175 285.575</b> (271° - 090°) <b>133.0 290.25</b> (091° - 270°)	TOWER <b>135.025 291.1</b>	GND CON <b>124.55 275.8</b>	CLNC DEL <b>124.55 275.8</b>
------------------------------	---	-------------------------------	--------------------------------	---------------------------------

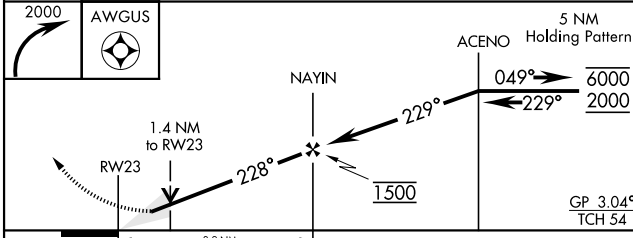


DME/DME RNP-0.3 NA  
For uncompensated Baro-VNAV systems, procedure NA below -15°C (5°F) or above 53°C (128°F).  
Circling visibility reduction by helicopters NA.

SE-2, 16 APR 2026 to 14 MAY 2026

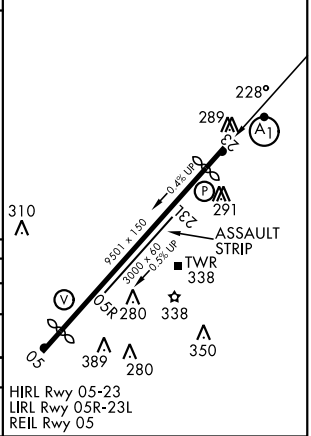
SE-2, 16 APR 2026 to 14 MAY 2026

EMERG SAFE ALT 100 NM 5300



ELEV	225	TDZE	200
------	-----	------	-----

CATEGORY	A	B	C	D
LPV DA *	400/24		200 (200-1/2)	
LNAV/ **	572/40		372 (400-3/4)	
VNAV DA ***	720/24	520 (600-1/2)	720/55	520 (600-1)
CIRCLING ****	760-1	542 (600-1)	920-2	1060-2 3/4
			702 (800-2)	842 (900-2 3/4)



HIRL Rwy 05-23  
LIRL Rwy 05R-23L  
REIL Rwy 05

FORT BRAGG, NORTH CAROLINA

35°10'N-79°01'W

POPE AAF (KPOB)

Amdt 8 11JUL24

# RNAV (GPS) RWY 23