

TACAN-A

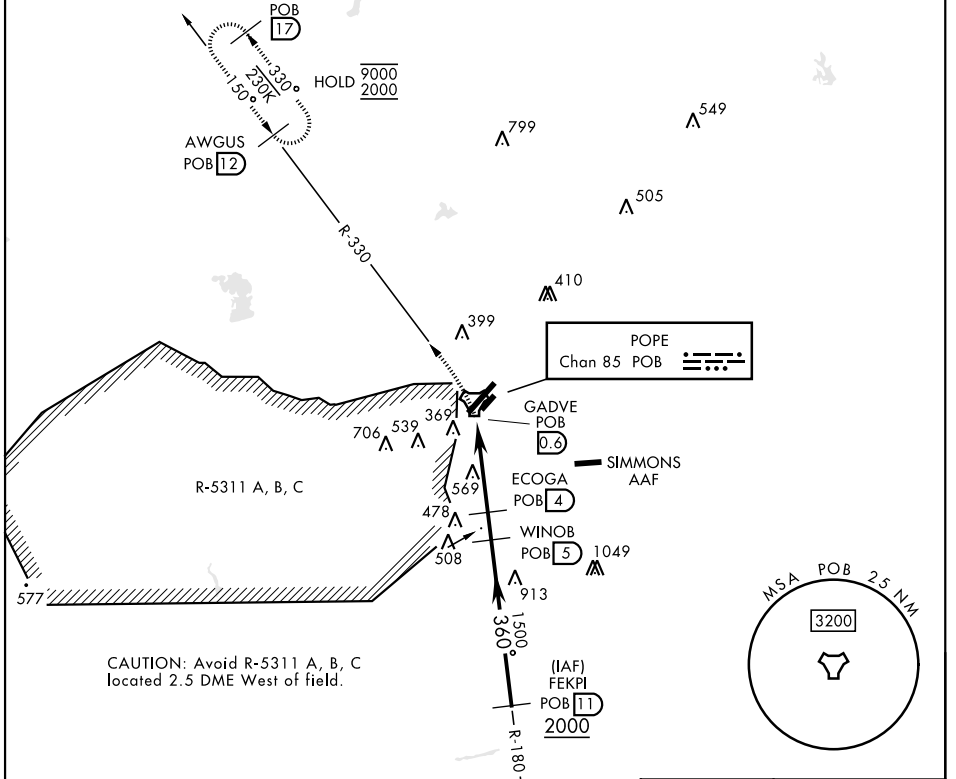
TACAN POB Chan 85	APCH CRS 360°	Rwy Idg TDZE Arprt Elev N/A N/A 225	[USAF]	POPE AAF (KPOB)
-----------------------------	-------------------------	---	--------	-----------------

RADAR required

▼ * Circling not authorized SE of Rwy 5-23.

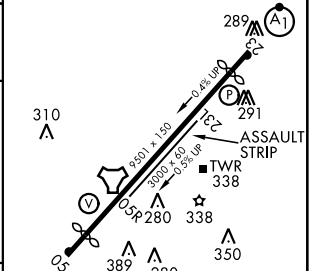
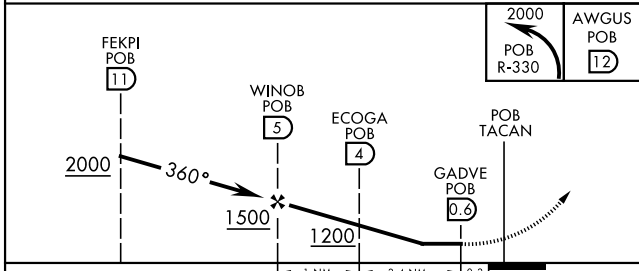
MISSED APPROACH: Climbing left turn to 2000 via POB R-330 to AWGUS and hold.

ATIS 132.3 353.725	FAYETTEVILLE APP CON 125.175 285.575 (271°- 090°) 133.0 290.25 (091°- 270°)	TOWER 135.025 291.1	GND CON 124.55 275.8	CLNC DEL 124.55 275.8
------------------------------	---	-------------------------------	--------------------------------	---------------------------------



EMERG SAFE ALT 100 NM 5300

ELEV 225 **D**



CATEGORY	A	B	C	D	HIRL Rwy 05-23 ILRL Rwy 05R-23L REIL Rwy 05
CIRCLING *	840-1	622 (700-1)	920-2 702 (800-2)	1060-2¾ 842 (900-2¾)	360°

FORT BRAGG, NORTH CAROLINA 35°10'N-79°01'W POPE AAF (KPOB)

Amdt 4 24MAY18

TACAN-A

SE-2, 16 APR 2026 to 14 MAY 2026

SE-2, 16 APR 2026 to 14 MAY 2026