

VOR RWY 4

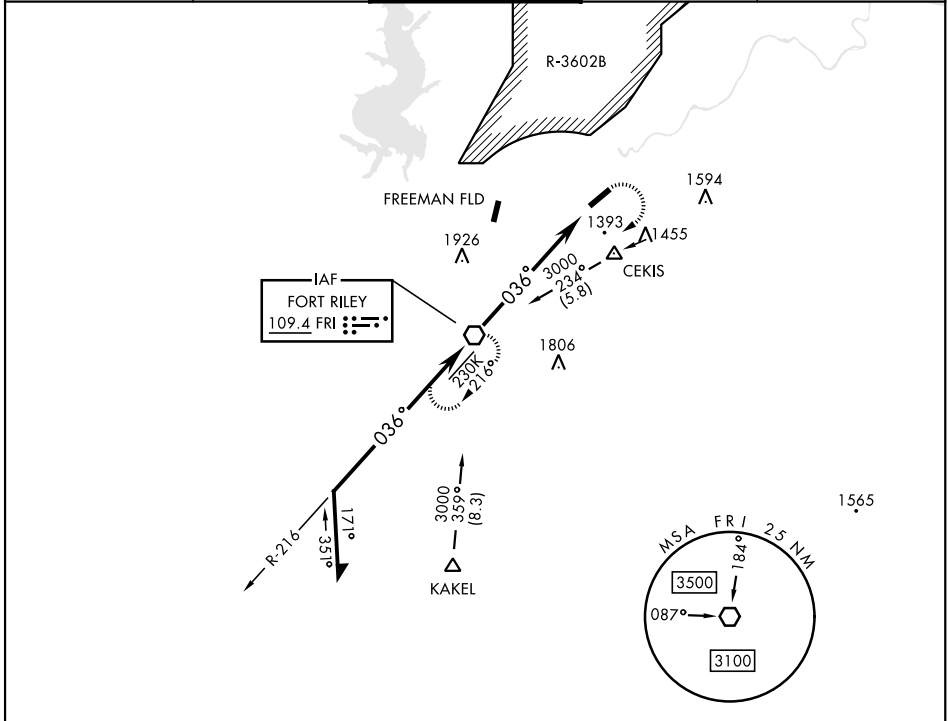
VOR FRI 109.4	APCH CRS 036°	Rwy ldg 4503 TDZE 1066 Arpt Elev 1066
-------------------------	-------------------------	--

[USA]

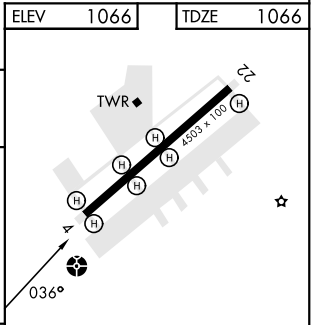
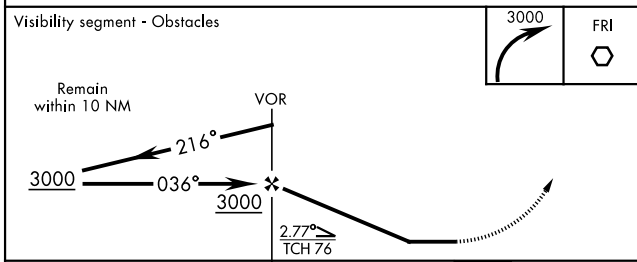
MARSHALL AAF (KFRI)

<p>▼ * Circling not authorized NW of Rwy 4-22. Rwy 4 helicopter visibility reduction below 3/4 mile not authorized.</p>	<p>ODALS</p>	<p>MISSED APPROACH: Climbing right turn to 3000 direct FRI VOR and hold.</p>
	<p>3000</p>	

<p>ATIS ★ 121.025</p>	<p>APP CON 121.25 269.05</p>	<p>TOWER ★ 126.2 (CTAF) 248.65</p>	<p>GND CON 140.20 229.4</p>	<p>CLNC DEL 119.65</p>
----------------------------------	---	---	--	-----------------------------------



ELEV	1066	TDZE	1066
------	------	------	------



CATEGORY	A	B	C	D
S-4	1800-1 734 (800-1)	1800-2 734 (800-2)		
CIRCLING *	1800-1 734 (800-1)	1800-2 734 (800-2)	1900-2 834 (900-2 3/4)	

HIRL Rwy 4-22					
FAF to MAP 6.3 NM					
Knots	60	90	120	150	180
Min:Sec	6:18	4:12	3:09	2:31	2:06

VOR RWY 4

NC-2, 16 APR 2026 to 14 MAY 2026

NC-2, 16 APR 2026 to 14 MAY 2026