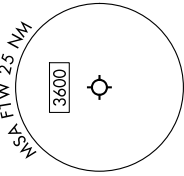


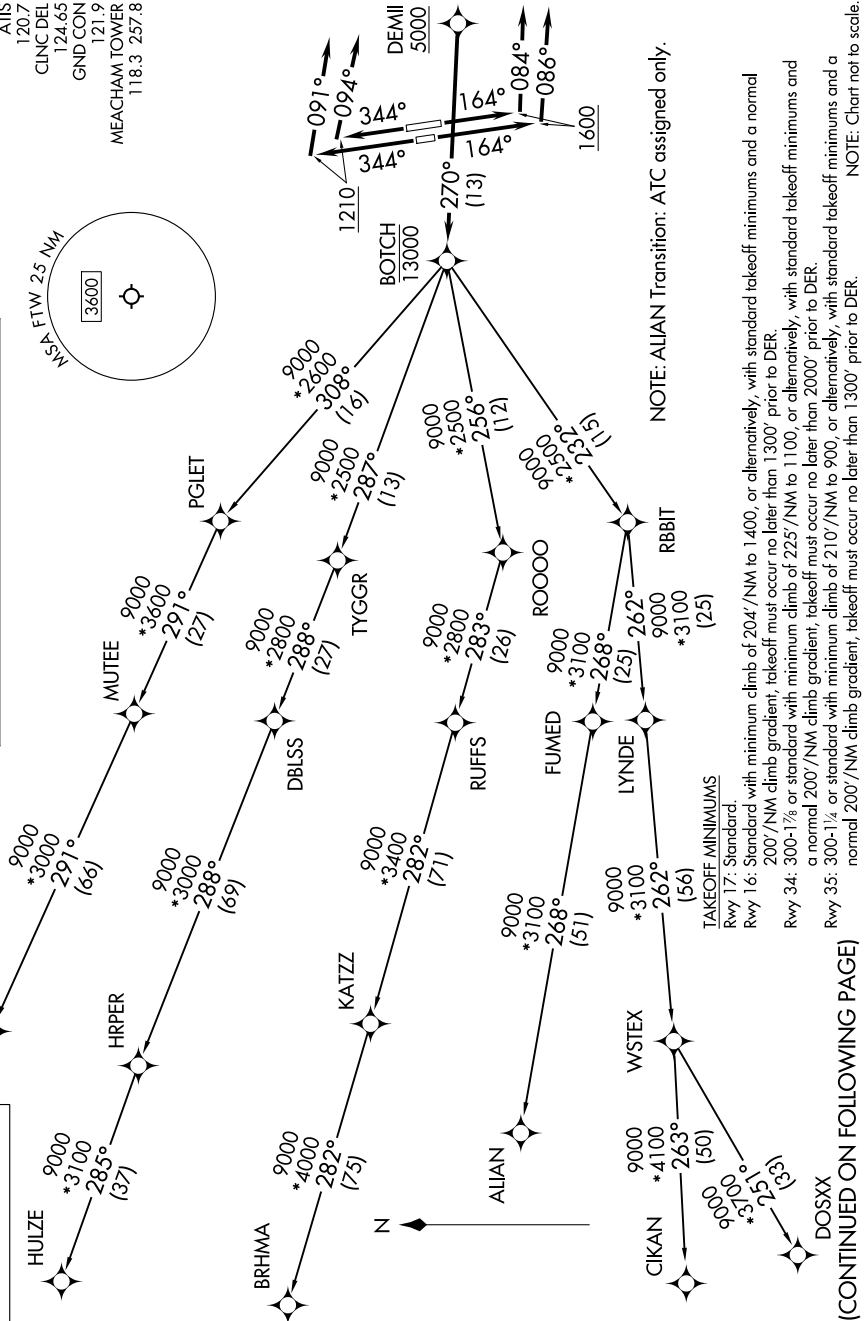
BOTCH ONE DEPARTURE (RNAV)

IONE STAR DEP CON
 118.1 306.95 (NORTH)
 135.975 379.9 (SOUTH)
 ATIS
 120.7
 CLNC DEL
 124.65
 GND CON
 121.9
 MEACHAM TOWER
 118.3 257.8



RNAV 1 - DME/DME/IRU or GPS required.
 RADAR required for non-GPS equipped aircraft.

**TOP ALTITUDE:
ASSIGNED BY ATC**



NOTE: ALIAN Transition: ATC assigned only.

TAKEOFF MINIMUMS
 Rwy 17: Standard.
 Rwy 16: Standard with minimum climb of 204'/NM to 1400, or alternatively, with standard takeoff minimums and a normal 200'/NM climb gradient; takeoff must occur no later than 1300' prior to DER.
 Rwy 34: 300-1% or standard with minimum climb of 225'/NM to 1100, or alternatively, with standard takeoff minimums and a normal 200'/NM climb gradient; takeoff must occur no later than 2000' prior to DER.
 Rwy 35: 300-1% or standard with minimum climb of 210'/NM to 900, or alternatively, with standard takeoff minimums and a normal 200'/NM climb gradient; takeoff must occur no later than 1300' prior to DER.

(CONTINUED ON FOLLOWING PAGE)