

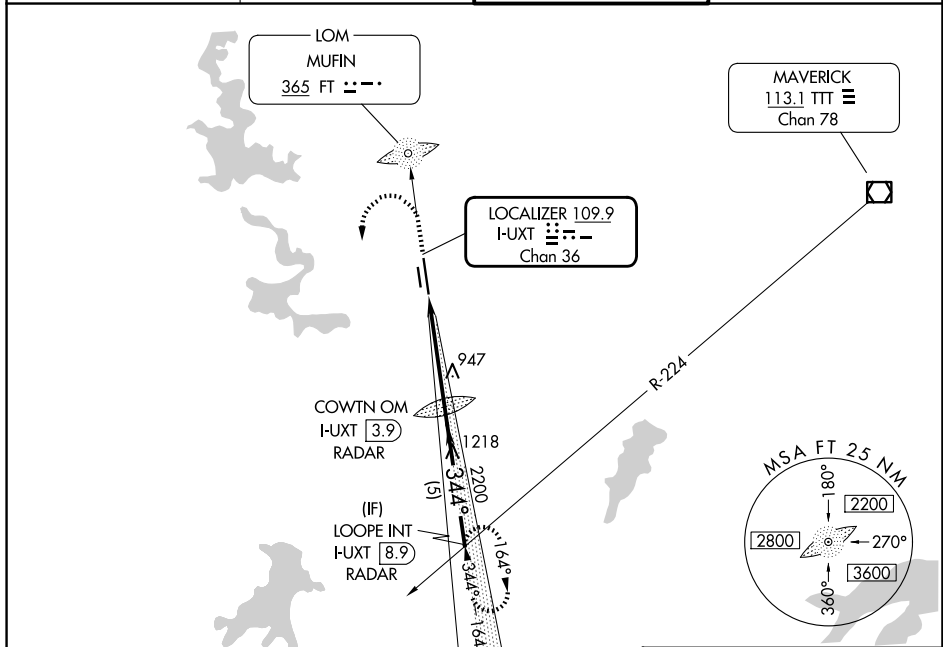
LOC I-UXT 109.9 Chan 36	APP CRS 344°	Rwy Ldg TDZE Apt Elev	7306 680 710
---	------------------------	-----------------------------	---

ILS or LOC RWY 34

FORT WORTH MEACHAM INTL (FTW)

Inoperative table does not apply to S-LOC 34 Cat C.	MALS 	MISSED APPROACH : Climb to 1500, then climbing left turn to 2800 via I-UXT south course to LOOPE Int/ I-UXT 8.9 DME and hold.

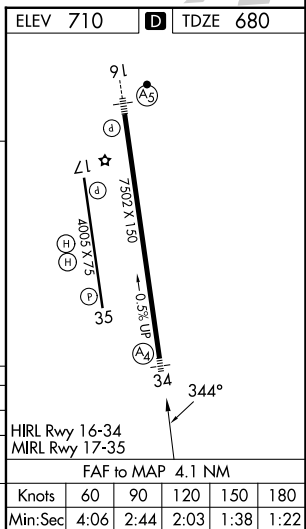
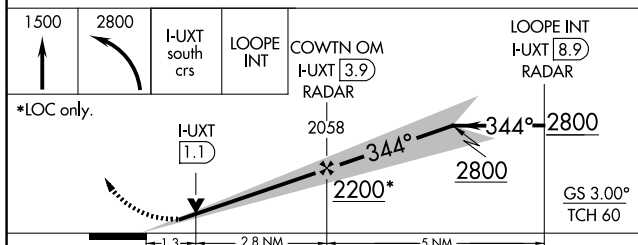
ATIS 120.7	LONE STAR APP CON 118.1 306.95 (N) 135.975 379.9 (S)	MEACHAM TOWER 118.3 257.8	GND CON 121.9
----------------------	--	-------------------------------------	-------------------------



SC-2, 16 APR 2026 to 14 MAY 2026

SC-2, 16 APR 2026 to 14 MAY 2026

RADAR REQUIRED



CATEGORY	A	B	C	D	
S- ILS 34	880-3/4 200 (200-3/4)				
S-LOC 34	1200-3/4 520 (500-3/4)	1200-1 1/2 520 (500-1 1/2)	1200-1 3/4 520 (500-1 3/4)	1200-1 3/4 520 (500-1 3/4)	
CIRCLING	1260-1 550 (600-1)	1280-1 570 (600-1)	1340-1 3/4 630 (700-1 3/4)	1500-2 1/2 790 (800-2 1/2)	

HIRL Rwy 16-34	60	90	120	150	180
MRL Rwy 17-35	4:06	2:44	2:03	1:38	1:22
FAF to MAP 4.1 NM					